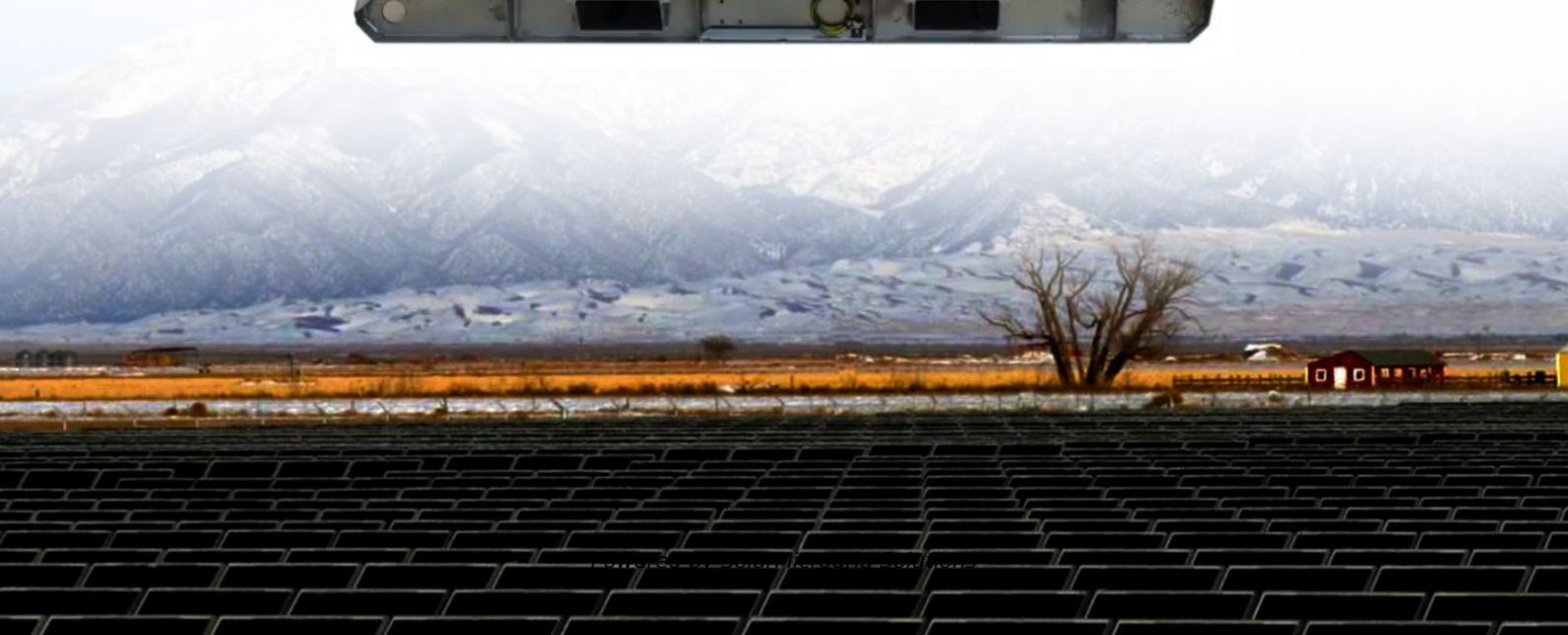


# **Which type of outdoor power battery should be used**





## Overview

---

When selecting batteries for outdoor activities, prioritize weight, capacity, temperature tolerance, and compatibility with your devices. Lithium batteries are often preferred due to their lightweight design and efficiency; however, alkaline options may suffice for less demanding applications. Are lithium ion batteries a good choice?

TIP: Compared to other types, lithium-ion batteries have a longer run time between charges, making them a good choice for larger yards and gardens. Cycle life is the overall life of the battery. It represents the number of times a battery can be recharged before its performance degrades. TIP: Proper care helps optimize battery life.

What type of battery should I use?

The most commonly used battery of all is an alkaline battery (meaning it contains an alkaline electrolyte, usually potassium hydroxide). Best use: "Low-drain" devices such as LED headlamps, LED flashlights, toys, remote control devices, clocks and radios, and even moderate-drain items such as lights using incandescent bulbs.

Are Ope batteries good for outdoor maintenance?

Here's how to power up for your outdoor maintenance needs. Most OPE batteries are rechargeable, and all offer exceptional ease of use and low maintenance. Save time and effort with no cords to worry about and no need for fuel mixing, carburetor cleaning or winterizing at season's end. Here are the main battery types you can choose between.

Which battery is best for cold weather?

Cold temperatures significantly impact battery performance, so choosing one that can handle these conditions is essential. In this article, we'll explore the top battery options, including Lead Acid, LiFePO<sub>4</sub>, and AGM batteries, to help you determine the best solution for reliable power in extreme cold. 1. Lead-Acid Batteries 2. AGM Batteries 3.



## How do I choose a battery?

You can look on the device itself for an indication of what battery size it takes, or consult the instruction manual. Decide between single-use or rechargeable batteries: Single-use batteries are cheaper upfront and have an excellent shelf life, but rechargeables can be used again and again, making them ultimately the more cost-effective choice.

## Which battery is best for my Ope?

Explore your options to find the most ergonomic match for your OPE. Also known as lead acid batteries, these 6V or 12V batteries are used in applications where recharging isn't feasible. BEST FOR: Riding lawn mowers, lawn tractors, lawn irrigation and electric fence systems



## Which type of outdoor power battery should be used

---



### [Outdoor Tech Guide: How to Choose the Best Battery ...](#)

In this guide, we'll walk you through the pros and cons of three top battery types used in outdoor tech, and help you match the best one to your specific needs. ...

### [Product Information](#)

### Guide to Choosing the Right Batteries for Outdoor Activities

Selecting the right battery involves balancing factors like duration, performance, cost, and environmental impact. This guide provides an in-depth look at different battery types, ...

### [Product Information](#)



### batteries

Lead acid "car battery" is the obvious choice - they are big and bulky but designed to be charged "on the fly". You can forget about Li/Ion chemistries since they can't be charged ...

### [Product Information](#)



### Here's How to Choose the Best Battery for Your Outdoor Power ...

When choosing an OPE battery, review the voltage and capacity to ensure they meet the power and run time needs of your OPE. Here are some top-of-mind considerations for finding the ...



## [Product Information](#)



## [Best Batteries For Outdoor Use \[Updated On: September 2025\]](#)

The key factors that should influence your battery choice for outdoor devices include durability, capacity, weather resistance, power output, and rechargeability.

## [Product Information](#)

## [Outdoor Tech Guide: How to Choose the Best Battery Chemistry](#)

In this guide, we'll walk you through the pros and cons of three top battery types used in outdoor tech, and help you match the best one to your specific needs. When you think of lithium-ion, ...

## [Product Information](#)



## [How to Store Lithium Power Tool Batteries](#)

Check the manufacturer's instructions for your specific lithium power tool battery model to see if there are any special storage requirements. If possible, store your lithium power ...

## [Product Information](#)



## [Which Battery Is Best for Outdoor Power Stations?](#)

Common battery types include IMR (Lithium Manganese Oxide), IFR (Lithium Iron Phosphate), and ICR (Lithium Cobalt Oxide). Each battery type has unique features in terms of ...

[Product Information](#)



## **Batteries in Cold Weather**

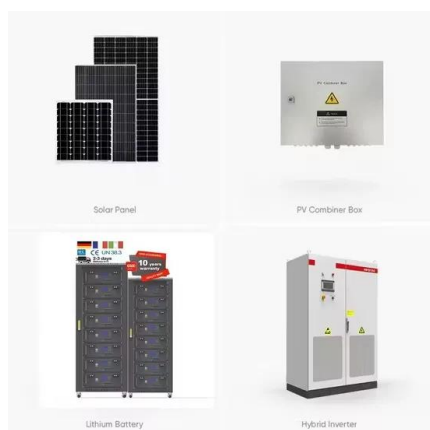
Cold temperatures significantly impact battery performance, so choosing one that can handle these conditions is essential. In this article, we'll explore the top battery options, including Lead ...

[Product Information](#)

## [Never Run Out of Battery in the Wild: Your Outdoor Phone ...](#)

Charge your phone in the great outdoors with a reliable, portable charging station. Powering your gadgets outdoors is a breeze with the right equipment. Choose from solar ...

[Product Information](#)



## [Best Outdoor Battery Recommendations for Off-Grid Power](#)

Finding the right power solution for your adventures can be a daunting task, which is why we've put together our Best Outdoor Battery Recommendations to guide you.

[Product Information](#)

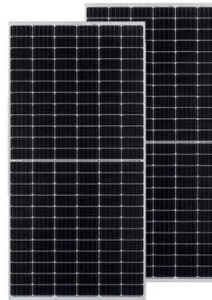




## [Portable Power for Camping: A Complete Guide](#)

Lithium Portable Power Stations: This is a new type of device in which lithium-ion battery cells replace the lead-acid batteries found in most traditional portable options.

### [Product Information](#)



## **What Batteries to Use for Solar Lights: A Guide to Optimizing**

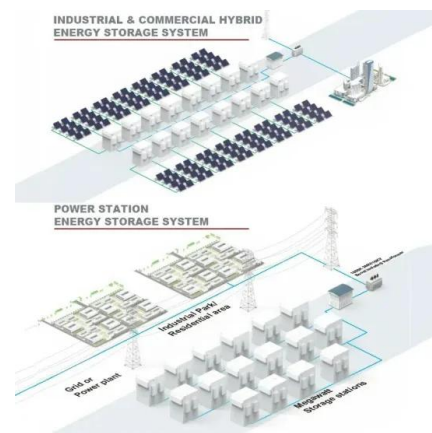
Struggling with dim solar lights? Discover how the right batteries can transform your outdoor lighting experience. This article explores battery performance, efficiency, and the ...

### [Product Information](#)

## [Power Tool Battery Compatibility Chart: Everything ...](#)

This chart simplifies the battery selection process by providing users with a list of compatible batteries for specific power tools. In this article, ...

### [Product Information](#)



## [How to Choose Batteries , REI Expert Advice](#)

The key factors that should influence your battery choice for outdoor devices include durability, capacity, weather resistance, power output, and rechargeability.

### [Product Information](#)



### [Power Bank Battery Types: Best Picks for Outdoor Adventures](#)

In this guide, we'll dissect the main battery types used in power banks, weigh their strengths and weaknesses, and help you choose the best one for your next escapade.

#### [Product Information](#)



### **Battery type for solar powered outdoor applications? : r/esp32**

A nickel-cadmium battery (NiCd or NiCad) is a rechargeable battery used for portable computers, drills, camcorders, and other small battery-operated devices requiring an even power discharge.

#### [Product Information](#)

### [How to Choose Batteries , REI Expert Advice](#)

Decide between single-use or rechargeable batteries: Single-use batteries are cheaper upfront and have an excellent shelf life, but rechargeables can be used again and again, making them ...

#### [Product Information](#)



## Contact Us

For catalog requests, pricing, or partnerships, please visit:  
<https://www.les-jardins-de-wasquehal.fr>