

Which devices batteries are connected to the base station





Overview

Devices that operate using the Qi standard rely on between planar . A Qi system consists of two types of devices – the Base Station, which is connected to a power source and provides inductive power, and Mobile Devices, which consume inductive power. The Base Station contains a power transmitter that comprises a transmitting coil that generates.

Which battery is best for telecom base station backup power?

Among various battery technologies, Lithium Iron Phosphate (LiFePO₄) batteries stand out as the ideal choice for telecom base station backup power due to their high safety, long lifespan, and excellent thermal stability.

What makes a telecom battery pack compatible with a base station?

Compatibility and Installation Voltage Compatibility: 48V is the standard voltage for telecom base stations, so the battery pack's output voltage must align with base station equipment requirements. Modular Design: A modular structure simplifies installation, maintenance, and scalability.

What is a cellular base station?

A cellular base station, also known as a cell site or cellular tower, is the interface between wireless phones and traditional wired phones. It allows you to use your cell phone to call other phones. The base station, which is a wireless system, uses microwave radio communication. As you drive along the highway, you may notice these structures appearing every few miles.

How do I replace the base station's backup battery?

To replace the base station's backup battery, follow the steps below: Unplug the Base Station. You don't want to start fiddling with the device while it is plugged in. Turn the device upside down and locate the battery compartment at the device's base. Unscrew the battery compartment and pull out the protective casing.

How does a base station function?



A base station functions by requiring a powerful transmitting amplifier to generate strong signals. This "power amplifier" is linked to the transmitting antenna by a length of coaxial cable, and is usually housed in a small building beneath the tower. (Under the tower).

Does ring base station have a USB port?

The USB port on the Ring base station is for potential future expansions. The company recommends not to use this port at all at the moment. That being said, the port is fully functional and could be used to power your Ring keypad. Is Ring Base Station POE?

No. The Ring base station is not powered over ethernet (PoE).



Which devices batteries are connected to the base station



Troubleshooting

Recharge the battery for 12 hours with the AC adapter. If the battery cannot be recharged, you will need to replace the battery. Contact Onset Technical Support or your Onset Authorized ...

[Product Information](#)

[What Is Base Station Energy Storage?](#)

In the event of a main power failure, the system automatically switches on to keep the base station operational. These systems have a lithium battery, as it charges fast, holds a ...

[Product Information](#)



[UPS Batteries in Telecom Base Stations - leagend](#)

In today's always-connected world, telecom base stations are the backbone of communication networks, ensuring seamless connectivity for mobile phones, data services, ...

[Product Information](#)



[Fix: Astro A50 not connecting to Base Station](#)

Why is Astro A50 not connecting to base station?
Short Answer: The cause of the Astro A50 not connecting to the base station can vary. It could be due to loose hardware ...

[Product Information](#)



[23 Ring Base Station Common Questions \(Solved\)](#)

How long it takes your Ring base station to update would depend on the size of the firmware update, the speed of your internet connection, and how many Ring sensors and other ...

[Product Information](#)

Telecom Base Station Backup Power Solution: Design Guide for ...

Discover the 48V 100Ah LiFePO4 battery pack for telecom base stations: safe, long-lasting, and eco-friendly. Optimize reliability with our design guide.

[Product Information](#)



[Base Station \(Gen 3\) Overview and Installation Guide](#)

Only use NiMH Rechargeable Batteries - never insert regular, alkaline batteries into your Base Station! Watch this video from our team of experts for a hands-on installation experience

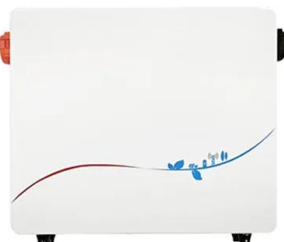
[Product Information](#)



[What is a base station energy storage battery? .. NenPower](#)

Base station energy storage batteries offer vital support to enhance the stability of both telecommunications and electrical grids. During power outages or disruptions, these ...

[Product Information](#)



[Cannot pair any devices to Ring base station : r/Ring](#)

The base station is connected to my wi-fi network (Virgin Media in the UK) with no issues, but the device set-up screen loops through 'preparing to add device > adding device > retrying' ...

[Product Information](#)

Arlo User Manual

To install your base station: Connect the base station to your router using an Ethernet cable. Connect the AC adapter to the base station. Plug the AC adapter into an electrical outlet. ...

[Product Information](#)



[Setting up your Ring Alarm Base Station](#)

Setting up your Ring Alarm Base Station Stay in control of your home from anywhere with the central hub of your alarm system -- the Ring Alarm Base Station. Connect all of your Ring ...

[Product Information](#)



[Do You Need A Base Station For Ring Cameras? 5 Must-Knows!](#)

Device Management: The Base Station acts as a central control point for all Ring devices connected to your home security network. It manages the communication between ...

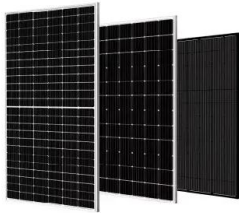
[Product Information](#)



[How to Connect Ring Alarm Base Station to Ethernet and Wifi](#)

If your Base Station is connected to the Internet using an Ethernet cable, when you attempt to connect to wifi you should receive a message stating that as long as the Ethernet cable is ...

[Product Information](#)



Qi (standard)

Devices that operate using the Qi standard rely on electromagnetic induction between planar coils. A Qi system consists of two types of devices - the Base Station, which is connected to a power source and provides inductive power, and Mobile Devices, which consume inductive power. The Base Station contains a power transmitter that comprises a transmitting coil that generates ...

[Product Information](#)



Star Topology in IoT Networks: How Sensor Devices Connect via ...

1 day ago · IoT sensor devices often use star topology, connecting to a local gateway that links to a base station for cloud connectivity. Discover how this architecture boosts scalability, energy ...

[Product Information](#)



[What are base station energy storage batteries used for?](#)

FREQUENTLY ASKED QUESTIONS WHAT TYPE OF BATTERIES ARE USED IN BASE STATIONS? Base stations typically utilize varying types of batteries, with lead-acid ...



[Product Information](#)

Contact Us

For catalog requests, pricing, or partnerships, please visit:
<https://www.les-jardins-de-wasquehal.fr>