

# **Which country s EMS for communication base stations is best**





## Overview

---

Which countries have EMS systems in the GCC?

The main aim of this study is to advance our understanding of the current EMS systems in the GCC countries with particular focus on three countries: Kingdom of Bahrain, State of Kuwait, and KSA.

What frequency does EMS radio communication take place in?

EMS radio communication takes place in the VHF low band, VHF high band, and UHF band. VHF low band is the radio frequencies from 32-50 megahertz (MHz). They are able to follow the shape of the earth allowing communication over long distances. These frequencies are more susceptible to interference from, weather, buildings, and electrical equipment.

Why is communication important in EMS?

Communication in EMS is essential. Patients must be able to access the system, the system must be able to dispatch units, EMTs must have a means of communicating with medical direction and receiving facility, and EMTs must be able to communicate vital information to other personnel.

Which EMS organizations participated in the survey?

The three EMS organizations namely the NA in Kingdom of Bahrain, AS in State of Kuwait, and RC in KSA had participated and completed the survey. Table 1 highlights the general demography of the representing countries. 11 Measurements for 10 structural components of EMS was assessed (Table 2).

Which data systems are linked to EMS data in Na and RC?

It was noted that none of the healthcare-related data systems are operationally linked with EMS data systems in NA, while motor vehicle crash systems, traffic record systems and emergency departments were linked to EMS data in AS and trauma and STEMI registry were linked to EMS data in RC.



How does EMS radio communication work?

It may also convert the signal to a telephone signal and send the communications through public or dedicated telephone lines. EMS radio communication takes place in the VHF low band, VHF high band, and UHF band. VHF low band is the radio frequencies from 32-50 megahertz (MHz).



## Which country s EMS for communication base stations is best

---



[EMS System Communications - georgiaemsacademy](#)

In a typical analog cell-phone system in the United States, the cell-phone carrier receives about 800 frequencies to use across the city. The carrier chops up the city into cells. ...

[Product Information](#)

### [Chapter 5 communications Flashcards , Quizlet](#)

Base Stations: base station radios are the most powerful radios in the communications system, with a transmitter output power of up to 275 watts. They have a fixed location, such as a ...

[Product Information](#)



[Design Considerations and Energy Management System for ...](#)

This paper presents the design considerations and optimization of an energy management system (EMS) tailored for telecommunication base stations (BS) powered by

[Product Information](#)



[EMS System Communications - georgiaemsacademy](#)

The Powerful Base Station Radio The base station radio generally sites on a desk and is programmed to transmit with increased power to overcome any obstacles or distance ...



## [Product Information](#)



## [Chapter 17 True/False Flashcards , Quizlet](#)

Study with Quizlet and memorize flashcards containing terms like Question 1 Wireless communications include radios and cellular telephones. Select one: True False, Question 2 ...

## [Product Information](#)

## [Look to the Stars: Satellites and the Future for Emergency](#)

There are slight differences between the two most commonly used technologies, cell broadcast and location-based SMS, but EENA believes that using both technologies is the ...

## [Product Information](#)



## [Chapter 17 Communication and Documentation](#)

A. Portable B. Repeater C. Mobile D. Base, Which of the following components of an EMS communication system would most likely provide the farthest transmission of voice? A. ...

## [Product Information](#)





## [Communications-EMT -- Hopper Institute®](#)

A base station is a radio operated from a fixed site such as a dispatch center, hospital, or some other location. It usually runs off community electrical power and transmits at much higher ...

### [Product Information](#)



## [Chapter 2: Preparatory Part 2 - Emergency Medical Responder](#)

This section explores the key elements of communication in EMS, focusing on the technologies used, best practices for effective communication, and the importance of maintaining robust ...

### [Product Information](#)



## [Ambulance Radios: Types And Uses , ShunAuto](#)

In the context of emergency medical services (EMS), base stations play a crucial role in facilitating communication between different parties. They enable EMTs to ...

### [Product Information](#)



## **EMT Chapter 17 Flashcards , Quizlet**

D. Federal Communications Commission. The Federal Communications Commission (FCC) has jurisdiction over all radio operations in the United States, including those used by EMS ...

### [Product Information](#)

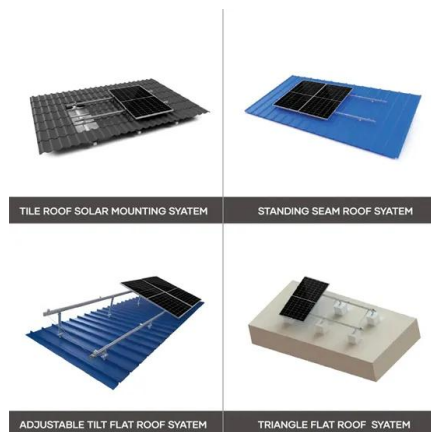




## A Comparison of Three Emergency Medical Services Organizations

This study delivers a unique insight on EMS by comparing three operating EMS agencies among the GCC countries: NA in the Kingdom of Bahrain, AS in State of Kuwait and ...

### [Product Information](#)



### [EMS Chapters 5-6 Flashcards . Quizlet](#)

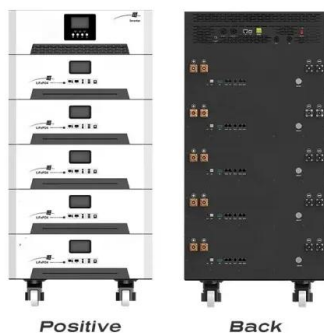
Your EMS agency wants to increase the power output of the base station in order to cover a larger area without needing a repeater. Which federal agency is responsible for establishing ...

### [Product Information](#)

## Chapter 15 Study Plan Flashcards

B. Federal Communications Commission. The Federal Communications Commission (FCC) has jurisdiction over all radio operations in the United States, including those used by EMS ...

### [Product Information](#)



### [CHP 15 post test Flashcards . Quizlet](#)

The FCC licenses individual base station operations, assigns radio call signs, approves equipment for use, establishes limitations for transmitter power output, assigns radio ...

### [Product Information](#)





### Which of the following components of an EMS communications ...

The best option for the furthest voice transmission in an EMS communications system is D. Base station with a repeater, due to its higher power and optimal positioning. ...

[Product Information](#)



## Contact Us

---

For catalog requests, pricing, or partnerships, please visit:  
<https://www.les-jardins-de-wasquehal.fr>