

What to do if the base station battery pack voltage is high





Overview

What makes a telecom battery pack compatible with a base station?

Compatibility and Installation Voltage Compatibility: 48V is the standard voltage for telecom base stations, so the battery pack's output voltage must align with base station equipment requirements. **Modular Design:** A modular structure simplifies installation, maintenance, and scalability.

Why is my battery bank too high?

Too high a voltage in a battery bank is either due to an improper setting in the charge controller or in the inverter's charger. Depending on your battery type, it will be necessary to have digital voltmeter available to measure voltage at the charge controller, the battery and the inverter terminals.

How does a BMS monitor a battery pack?

Detection of imbalance: The BMS continuously monitors the voltage of each cell or module in the battery pack. When the voltage of some cells is significantly higher than that of others, or the voltage difference exceeds a preset threshold, the BMS determines that the battery pack is unbalanced.

How does a battery management system work?

Monitoring Voltage Levels: The BMS continuously monitors the voltage of each cell. **Threshold Setting:** A maximum voltage threshold is set based on the battery chemistry. **Disconnection Mechanism:** If the voltage exceeds this threshold, the BMS disconnects the charging circuit to prevent further charging.

How do you know if a battery has a fault?

Specifically, the battery cell voltage sum pack point voltage is compared. If the two are the same, the battery voltage state is normal. If the two voltages are not the same, it indicates that the voltage state of the battery is abnormal, and the battery has a fault.



How does a battery monitoring system work?

Monitoring Voltage Levels: The BMS tracks the voltage of each cell during discharge. **Threshold Setting:** A minimum voltage threshold is established based on the battery type. **Disconnection Mechanism:** If any cell's voltage drops below this threshold, the BMS disconnects the load to prevent further discharge.



What to do if the base station battery pack voltage is high



Overvoltage protection vs. Undervoltage protection in Battery BMS

Overvoltage protection prevents batteries from exceeding safe voltage levels, while undervoltage protection ensures that batteries do not discharge below critical thresholds, ...

[Product Information](#)

[what happens if battery voltage is too high](#)

Summarise the voltage is too high belongs to overcharging, overcharging will damage the internal structure of the battery, resulting in reduced capacity or shortened cycle ...

[Product Information](#)



Telecom Base Station Backup Power Solution: Design Guide for ...

Designing a 48V 100Ah LiFePO4 battery pack for telecom base stations requires careful consideration of electrical performance, thermal management, safety protections, and ...

[Product Information](#)



[Battery Pack Voltage Measurement: What You Need to Know](#)

This article outlines the key considerations for accurately monitoring voltage and temperature in high-voltage battery packs, helping to support safer and more efficient EV development.



[Product Information](#)



[Maintenance Points for Telecom Base Station Batteries](#)

(1) Insulating mats should be arranged in the battery pack maintenance channel. (2) Batteries of different manufacturers, capacities, and models are strictly prohibited from being used in the ...

[Product Information](#)



[What Happens If Battery Voltage Is Too High?](#)

3 days ago · It's what I wish more engineers, DIYers, and system integrators understood: what really happens when voltage crosses the line, why it happens, and how you can catch it before ...

[Product Information](#)



Understanding Hybrid Battery Voltage Blocks, Cell Capacity, and

Learn how hybrid battery blocks, cell capacity, and balance impact performance. Understand weak modules, reconditioning, and how to diagnose imbalance.

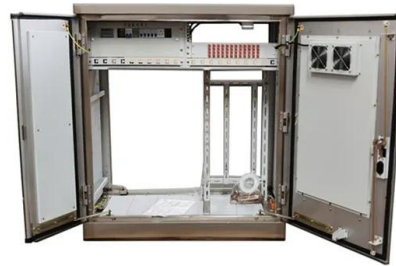
[Product Information](#)



How to Detect and Keep Types of BMS Voltage for Your Battery Pack

In electric vehicles and energy storage systems, the BMS needs to monitor and balance the voltage of each cell to ensure the performance and lifetime of the entire battery pack.

[Product Information](#)



How to Detect and Keep Types of BMS Voltage for Your Battery Pack

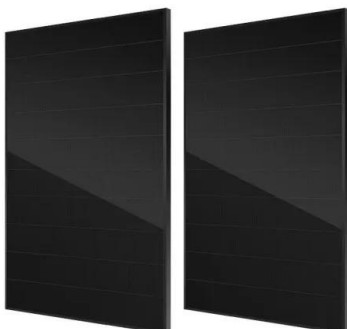
This helps reduce voltage differences between battery cells. Monitoring and adjustment: During the voltage balancing operation, BMS will continuously monitor the voltage ...

[Product Information](#)

[What Are High-Voltage Traction Batteries for EVs?](#)

How Do High-Voltage Batteries Influence EV Performance and Range? High-voltage batteries enable higher power output and energy storage, directly impacting ...

[Product Information](#)



[Battery Voltage very high when on Inverter with no Grid AC](#)

Too high a voltage in a battery bank is either due to an improper setting in the charge controller or in the inverter's charger. Depending on your battery type, it will be ...

[Product Information](#)



Pack voltage is reading a different voltage than measured by a

3 days ago· It's what I wish more engineers, DIYers, and system integrators understood: what really happens when voltage crosses the line, why it happens, and how you can catch it before ...

[Product Information](#)



An inconsistency assessment method for backup battery packs ...

Validation using real telecommunication base station battery pack profile. Slight differences in the production process and operation environment of individual cells in a battery ...

[Product Information](#)

[My balancing observations and safe voltages](#)

After paying close attention to the individual cells during the initial balancing of my new 12V/460Ah battery, I've come up with some various levels of safe voltages and ...

[Product Information](#)



What Are the Best Practices for Charging and Discharging High Voltage

To charge high voltage lithium batteries safely, use the right charger and avoid overcharging. Keep temperatures moderate during charging, and when discharging, avoid ...

[Product Information](#)

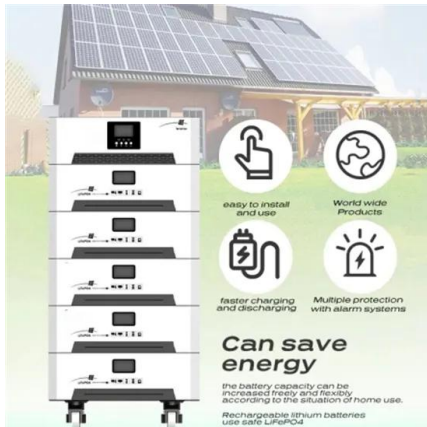




Pack voltage is reading a different voltage than measured by a

Resolving the issue: The pack voltage can be calculated from the individual cell voltages rather than measured by the total pack voltage sensor, and the BMS can be setup to ignore a ...

[Product Information](#)



[How to Fix a Battery Over Voltage Issue](#)

Below are some crucial guidelines and safety precautions to adhere to while handling a battery experiencing over voltage. Firstly, always ensure that you are working in a well-ventilated ...

[Product Information](#)

Contact Us

For catalog requests, pricing, or partnerships, please visit:
<https://www.les-jardins-de-wasquehal.fr>