

What size inverter should I use for a 100ah lithium battery

- ✓ High energy density and long cycle life
- ✓ Modular structure

No need to replace the battery

Shorter charging time

Meets 99% EV car





Overview

In general, for a 100ah battery, a 1000 watt pure sine wave inverter will be a good suit. It provides enough power to operate a wide range of household or camping appliances. Now, let's figure out how to choose the right inverter size for a 100ah battery, based on what you need.

When picking an inverter for your 100ah battery, it's best to choose a pure sine wave inverter. This type of inverter gives a steady power output, similar to what you get from the electricity grid. This clean power is safer for your appliances and makes them work.

To ensure a successful and safe experience with your inverter, here are a few additional tips to keep in mind: 1. Pick the Right Size Cable: Using the right size cables for connecting your inverter to the battery and appliances is important. Thicker cables with.

To help you pick the right inverter size, I've made a handy chart. It shows how different inverter sizes can handle running different things at the same time. This chart covers a range.

Based on the total load of 325 watts, you'll need at least a 350W inverter to power them well with a 100Ah battery. Although, it is advisable to add an extra 20% to the total load when sizing the inverter to account for safety factors. Can a 100Ah battery be a 24V inverter?

Most 100Ah batteries are 12V, but some systems may use 24V. Your inverter must match your battery voltage (e.g., 12V inverter for a 12V battery). 2. Power Rating of the Inverter (Wattage) Inverters are rated by their continuous power output in watts (W). The right inverter size depends on how much power your appliances draw.

How do I match my inverter with a 100Ah battery?

To match your inverter with a 100Ah battery, several factors must be considered. Inverters are rated based on continuous power and surge power. Continuous power is the amount of power the inverter can supply continuously without overheating or damage. Surge power refers to the short-term power needed to start appliances with high startup currents.



Can I use a 2000 watt inverter with a 100 watt battery?

Yes, you can use a 2000 watt inverter with a 100ah battery. But if you use 2000 watts from your 12v 100ah battery, it will use up the battery faster and over time, it will also shorten the battery's life. Can I use a 1500W inverter with a 100Ah battery?

Yes, you can use a 1500 watt inverter with a 100ah battery.

How to choose an inverter for a 100 Ah battery?

When picking an inverter for your 100ah battery, it's best to choose a pure sine wave inverter. This type of inverter gives a steady power output, similar to what you get from the electricity grid. This clean power is safer for your appliances and makes them work their best.

How many watts can a 12V inverter run?

Power Rating of the Inverter (Wattage) Inverters are rated by their continuous power output in watts (W). The right inverter size depends on how much power your appliances draw. Here are some general guidelines: A 12V 100Ah battery can reasonably power an inverter up to 1000W-1200W for short periods.

How much power should an inverter use?

300W-500W: Best for efficiency and longer runtimes. 1000W: Suitable for moderate loads, shorter usage. Avoid 1500W+ unless battery is part of a larger bank. Final Thought: It's not just about "how big" your inverter can be — it's about how wisely you use your battery's stored energy.



What size inverter should I use for a 100ah lithium battery

[What Inverter Size is Best for a 100Ah Battery?](#)



Inverters are rated by their continuous power output in watts (W). The right inverter size depends on how much power your appliances draw. Here are some general guidelines: A 12V 100Ah ...

[Product Information](#)

What is the max inverter size I can use with a 100Ah lithium battery?

For a 12V 100Ah battery, a 1000W inverter is a good choice, balancing performance and efficiency. It allows about 80% of the battery's capacity to be used effectively while ...

[Product Information](#)



[How Do I Match My Battery Size to My Inverter?](#)

A general rule is that for every 1000 watts of inverter capacity, you should have at least 100Ah of battery capacity. For instance, if you have a 2000W inverter, you should ideally have at least ...

[Product Information](#)

How to Determine What Size Inverter You Can Run Off a 100Ah Battery

Determining the appropriate size of an inverter that can be run off a 100Ah battery involves understanding both the power output of the inverter and the energy capacity of the battery. A ...



[Product Information](#)



[Which Inverter Is Best for a 100Ah Battery?](#)

Selecting the best inverter for a 100Ah battery involves understanding the power requirements of your devices, the type of battery you have, and the inverter's efficiency. ...

[Product Information](#)

What Size Inverter Can I Run Off a 100Ah Battery? Maximize ...

Therefore, you can maximize your power capacity by using an inverter rated around 1000 to 1200 watts. This size allows you to run devices like lights, small appliances, ...

[Product Information](#)



[What Size Inverter Can I Run Off a 100Ah Battery? A...](#)

The right combination ensures efficiency, longevity, and optimal performance. This detailed guide will help you navigate through the decision-making process to determine the ...

[Product Information](#)





[What size inverter can I run off a 100Ah lithium battery?](#)

What size inverter can I run off a 100Ah lithium battery? A 100Ah lithium battery can typically support an inverter up to 1,200W for 1 hour, assuming a 12V system.

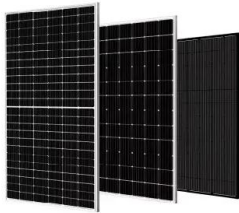
[Product Information](#)



[What Size Inverter Do I Need for a 100Ah Battery?](#)

Short Answer: A 100Ah battery typically requires a 1,000W-1,200W pure sine wave inverter for optimal performance. This accounts for voltage conversion losses (10-20%) and ...

[Product Information](#)



[What Size Inverter Do I Need for a 200AH Battery?](#)

To determine the appropriate inverter size for a 200AH battery, you need to consider the total wattage of the devices you plan to power. A general rule is to choose an ...

[Product Information](#)



[What Size Inverter for 100Ah Battery? - MWXNE POWER](#)

In this guide, we'll walk you through what size inverter works best with a 100Ah battery, how long your battery will last, and how to size your inverter-and-battery combo for ...

[Product Information](#)



What Size Lithium Battery Do I Need to Run a 5000W Inverter?

When it comes to powering a 5000W inverter, selecting the appropriate lithium battery is crucial for achieving optimal performance and reliability. In this comprehensive guide, we will delve ...

[Product Information](#)



[What size inverter do you need for a 100ah battery?](#)

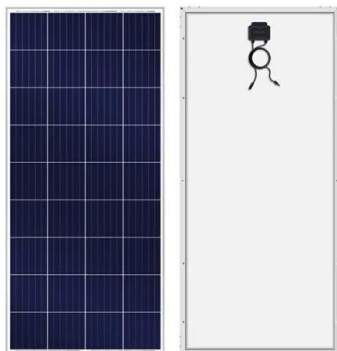
What size inverter for a 100Ah battery? For appliances that use a relatively low amount of power, such as laptops, lights, TVs, and small fridges, a 500W inverter will likely do ...

[Product Information](#)

[400W Solar Panel Kit \(DIY\): What Size Battery, ...](#)

In this guide, you'll learn, how many batteries, What size charge controller, what size inverter & what size cable you'll need for a 400-watt solar ...

[Product Information](#)



How to Determine What Size Inverter You Can Run Off a 100Ah ...

Determining the appropriate size of an inverter that can be run off a 100Ah battery involves understanding both the power output of the inverter and the energy capacity of the battery. A ...

[Product Information](#)



Contact Us

For catalog requests, pricing, or partnerships, please visit:
<https://www.les-jardins-de-wasquehal.fr>