

# **What kind of power supply does a communication base station have**





## Overview

---

What are the components of a base station?

**Power Supply:** The power source provides the electrical energy to base station elements. It often features auxiliary power supply mechanisms that guarantee operation in case of lost or interrupted electricity, during blackouts.

**Baseband Processor:** The baseband processor is responsible for the processing of the digital signals.

What is a communication base station?

Communication base station setups will usually include a wide array of different technologies, including power supplies, data servers, head end, radio repeaters, and communication systems that allow for high-speed continuous information flow. It can also be used as part of a leaky feeder system in the communication network.

Why are base stations important in cellular communication?

Base stations are important in the cellular communication as it facilitate seamless communication between mobile devices and the network communication. The demand for efficient data transmission are increased as we are advancing towards new technologies such as 5G and other data intensive applications.

Why do we need a base station?

**Technological advancements:** The New technologies result in evolved base stations that support upgrades and enhancements such as 4G, 5G and beyond, its providing faster speeds with better bandwidth.

**Emergency services:** They provide access to emergency services, so that in case of emergency, people can call through their mobile phones.

How does a base station work?

It usually connects the device to other networks or devices through a



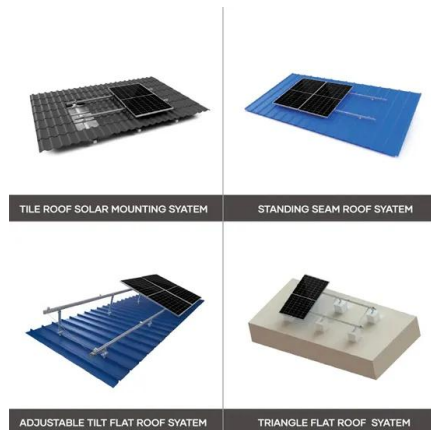
dedicated high bandwidth wire of fiber optic connection. Base stations typically have a transceiver, capable of sending and receiving wireless signals; Otherwise if they only send the trailer it will be considered a transmitter or broadcast point only.

What are the properties of a base station?

Here are some essential properties: Capacity: Capacity of a base station is its capability to handle a given number of simultaneous connections or users. Coverage Area: The coverage area is a base station is that geographical area within which mobile devices can maintain a stable connection with the base station.



## What kind of power supply does a communication base station have



### Network Communication

DC Remote Power Supply, MIMO Modules, Solar Power Modules: Integrated into energy cabinets for both indoor and outdoor applications, these modules are used for intelligent power supply ...

[Product Information](#)

### [Communications System Power Supply Designs](#)

The power factor corrected (PFC) AC/DC produces the supply voltage for the 3G Base station's RF Power amplifier (typ. +27V) and the bus voltage for point-of-load converters.

[Product Information](#)



### [Selecting the Right Supplies for Powering 5G Base Stations](#)

As a result, a variety of state-of-the-art power supplies are required to power 5G base station components. Modern FPGAs and processors are built using advanced nanometer processes ...

[Product Information](#)



### Setting Up a Base Station CB Radio for Long Range Communication

FAQs What is a base station CB radio? A base station CB radio is a fixed communication device designed for long-range use, typically requiring an external power ...



## [Product Information](#)



### INTEGRATED DESIGN

EASY TO TRANSPORT AND INSTALL,  
FLEXIBLE DEPLOYMENT



## [Selecting the Right Supplies for Powering 5G Base Stations](#)

As a result, a variety of state-of-the-art power supplies are required to power 5G base station components. Modern FPGAs and processors are built using advanced nanometer processes ...

## [Product Information](#)

## Power Supply Solutions for Wireless Base Stations Applications

Power solutions for wireless networks applications must have a wide voltage range, high power density, compact size, excellent reliability, high efficiency, and low no-load power consumption.



## [Product Information](#)



## [Mobile as base station--How do I power this thing? : r/gmrs](#)

Don't worry too much about how much the power supply can give, it's the draw that matters; the midland won't draw more than a power supply can handle unless maybe it's a wallwart ...

## [Product Information](#)



## Why does the communication base station use -48V power supply?

Communication base stations use -48V power supply for most historical reasons. Historically, the communications industry equipment has been using -48V DC power supply. ...

[Product Information](#)



## [A Device that Controls the Power Supply Sources of a Mobile](#)

The mobile communication base station can be supplied with electricity through two types of AC and DC power supply sources. AC power sources include local power grids, wind generators, ...

[Product Information](#)

## Maintenance of communication base station power supply system

With the commercialization of 3G services in major operators, the number of communication base stations has increased significantly, and the distribution range has also expanded significantly ...

[Product Information](#)



- ✓ LIQUID/AIR COOLING
- ✓ INTELLIGENT INTEGRATION
- ✓ PROTECTION IP54/IP55
- ✓ BATTERY /6000 CYCLES



## A Beginner's Guide to Understanding Telecom Power Supply ...

Telecom power supply systems, particularly UPS systems, ensure that communication networks remain operational even during a power failure. A UPS, or ...

[Product Information](#)



## Optimizing the power supply design for communication base stations

The mains power supply converts high voltage electricity into low voltage AC electricity suitable for base station equipment through a transformer, and distributes it to the ...

[Product Information](#)



**1mwh** (500kw/1mw)  
AIR COOLING  
ENERGY STORAGE CONTAINER



## Application of smart power usage on the communication base station

Using intelligent power management technology, it can realize intelligent power supply to communication equipment, providing appropriate power supply according to the actual ...

[Product Information](#)

## Lithium-ion Battery For Communication Energy Storage System

4. Larger and larger demand for batteries in the communications field In recent years, operators in several countries around the world have stepped up the deployment of 5G ...

[Product Information](#)



## (PDF) Dispatching strategy of base station backup power supply

With the mass construction of 5G base stations, the backup batteries of base stations remain idle for most of the time. It is necessary to explore these massive 5G base ...

[Product Information](#)





### [Telecom Base Station PV Power Generation System Solution](#)

Single Photovoltaic Power Supply System (no AC power supply) The communication base station installs solar panels outdoors, and adds MPPT solar controllers and other equipment in the ...

#### [Product Information](#)



### [Communications System Power Supply Designs](#)

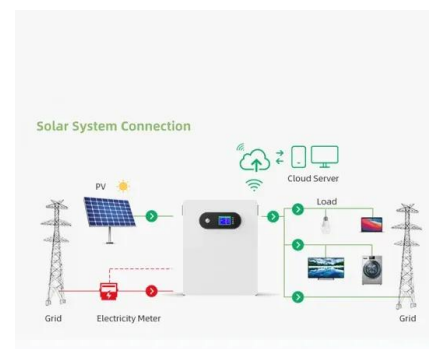
The power factor corrected (PFC) AC/DC produces the supply voltage for the 3G Base station's RF Power amplifier (typ. +27V) and the bus voltage for point-of-load converters.

#### [Product Information](#)

### [Telecom Base Station Power System Solution](#)

In order to ensure the continuity and efficiency of communication services, the power system of telecommunications base stations needs to have high reliability, stability and high efficiency to ...

#### [Product Information](#)



## Contact Us

For catalog requests, pricing, or partnerships, please visit:  
<https://www.les-jardins-de-wasquehal.fr>