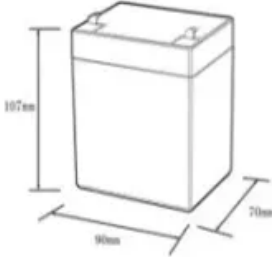

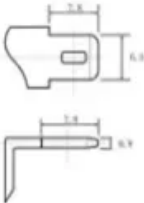


# What happens if the battery cabinet is too cold

12.8V6Ah



Nominal voltage (V):12.8  
 Nominal capacity (ah):6  
 Rated energy (WH):76.8  
 Maximum charging voltage (V):14.6  
 Maximum charging current (a):6  
 Floating charge voltage (V):13.6~13.8  
 Maximum continuous discharge current (a):10  
 Maximum peak discharge current @10 seconds (a):20  
 Maximum load power (W):100  
 Discharge cut-off voltage (V):10.8  
 Charging temperature (°C):0~+50  
 Discharge temperature (°C): -20~+60  
 Working humidity: <95% R.H (non condensing)  
 Number of cycles (25 °C, 0.5c, 100%dod): >2000  
 Cell combination mode: 32700-4s1p  
 Terminal specification: T2 (6.3mm)  
 Protection grade: IP65  
 Overall dimension (mm):90\*70\*107mm  
 Reference weight (kg):0.7  
 Certification: un38.3/msds





## Overview

---

Prolonged exposure to extremely low temperatures, typically below  $-20^{\circ}\text{C}$  ( $-4^{\circ}\text{F}$ ), can lead to permanent damage. It's essential to store and operate batteries within their recommended temperature ranges for optimal performance. Why do batteries take so long to charge in cold weather?

Slower Charging Rates: Charging batteries in cold conditions can be problematic. Lithium-ion batteries may not charge effectively below  $0^{\circ}\text{C}$ , leading to longer charging times or even failure to charge. 2. Temperature Thresholds for Different Battery Types Different types of batteries have varying thresholds for cold weather performance: 3.

What happens if you leave a battery in cold weather?

Leaving batteries in cold weather can significantly impact their performance and lifespan. Cold temperatures can cause a battery's chemical reactions to slow down, leading to reduced capacity and efficiency.

Why do lithium batteries stand out in cold weather?

In cold weather, lithium batteries stand out from other kinds of batteries due to their capacity for prolonged use and resilience in the face of freezing temperatures. There are a few reasons for this. One is that lithium batteries discharge much less per month than other battery alternatives.

Does cold weather affect battery performance?

Cold temperatures can adversely affect battery performance, particularly for lithium-ion types. Understanding the implications of low temperatures and implementing best practices for care will help users maintain optimal functionality and longevity of their batteries.

How do you maintain battery performance during cold weather?

To maintain optimal performance and longevity of batteries during cold weather, consider these best practices: Storage: Store batteries in a warm



environment when not in use. Ideally, keep them at room temperature or slightly warmer.

Can you leave lithium batteries in the Cold?

Yes, you can leave lithium batteries in the cold, but extreme temperatures can reduce performance, shorten lifespan, and even cause irreversible damage. Lithium-ion and lithium-metal batteries are widely used in smartphones, electric vehicles, and power tools, but cold temperatures affect their efficiency.



## What happens if the battery cabinet is too cold

---



### [Maintaining Battery Health in Cold Weather](#)

To maintain battery health in cold climates, keep batteries at room temperature when possible, use insulated cases or warmers, avoid charging in low temperatures, and store them fully ...

### [Product Information](#)

### [Does Cold Temperature Affect Speakers? All You ...](#)

However, cold temperature combined with moisture can be harmful to speakers. Although cold temperature conditions, in itself, cannot damage speakers or ...

### [Product Information](#)



### [Temperature Effects On Batteries: Maintenance Tips ...](#)

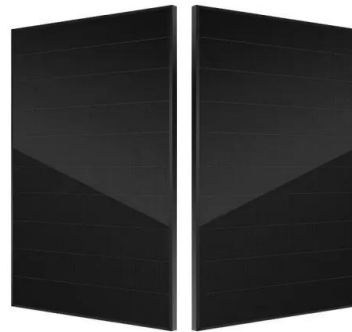
Both extreme cold and extreme heat can have adverse effects on batteries, affecting their capacity, charging efficiency, and overall lifespan. Extreme cold ...

### [Product Information](#)

### [Do Lithium Batteries Freeze in Cold Weather?](#)

In this article, we'll explore whether lithium batteries freeze in cold weather, the storage tips, and highlight the best lithium batteries for cold-weather use.

### [Product Information](#)



### [How Temperature Affects Solar Batteries:](#)

Solar batteries, like all batteries, are sensitive to temperature fluctuations. Whether you're using lithium-ion, lead-acid, or AGM (Absorbed Glass Mat) batteries, extreme heat or ...

### [Product Information](#)

### [Why Cold and Heat Harm Telecom Enclosure Batteries](#)

Not controlling battery temperature can cost more money. Replacing batteries often and system breakdowns can be avoided by managing battery conditions well. Effects of ...

### [Product Information](#)



### [Can Laptops Get Too Cold? How Low Temps Affect Performance](#)

Conclusion Yes, laptops can absolutely get too cold--and that can lead to faster battery drain, sluggish displays, and even hardware damage from internal condensation. ...

### [Product Information](#)

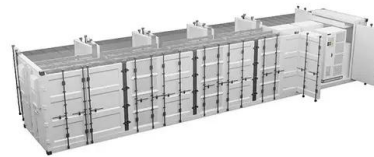




### [What are the Temperature Effects on Battery?](#)

Charging a battery when it's too cold can cause it to charge more slowly or fail to charge altogether. In extreme cases, charging in cold conditions can cause the battery to be ...

### [Product Information](#)



### **Cold Weather And Battery Life: Does Cold Weather Shorten Battery ...**

Cold weather can significantly affect battery performance, leading to reduced efficiency and capacity. Common signs that indicate this impact include slow engine crank, ...

### [Product Information](#)

### [Cold Weather And Battery Life: Does Cold Weather Shorten ...](#)

Cold weather can significantly affect battery performance, leading to reduced efficiency and capacity. Common signs that indicate this impact include slow engine crank, ...

### [Product Information](#)



### [How Do Lithium Batteries Perform in Cold Weather?](#)

This sluggish reaction rate hampers the battery's ability to store and release energy efficiently. As a result, users often observe a noticeable decrease in ...

### [Product Information](#)



## [Can My Battery Freeze? Cold Weather Battery Storage \[Guide\]](#)

Learn how cold weather affects your batteries and how to protect them from freezing. Our guide covers types, signs of damage, and best practices for storage and charging.

[Product Information](#)



## **Car Battery in Cold Weather: Winter Maintenance Tips to Avoid**

As the cold weather approaches, car owners often experience one of the most frustrating problems: a dead battery. But why does cold weather have such a dramatic impact ...

[Product Information](#)

## **Temperature Effects On Batteries: Maintenance Tips For Extreme ...**

Both extreme cold and extreme heat can have adverse effects on batteries, affecting their capacity, charging efficiency, and overall lifespan. Extreme cold temperatures can significantly ...

[Product Information](#)



## [What Happens If You Leave Batteries in Cold Weather?](#)

Leaving batteries in cold weather can significantly impact their performance and lifespan. Cold temperatures can cause a battery's chemical reactions to slow down, leading to ...

[Product Information](#)





## Do Batteries Last Longer in the Cold? Unveiling the Truth About Cold

Discover how cold temperatures impact battery life, charging efficiency, and safety. Learn expert tips to optimize lithium-ion, lead-acid, and EV batteries in winter.

[Product Information](#)



## Cold Battery Recharge: Effects On Lithium-Ion And Lead Acid Battery

Cold battery recharge is not entirely safe for all battery types. While lithium-ion batteries can tolerate colder temperatures to some extent, lead-acid batteries face significant ...

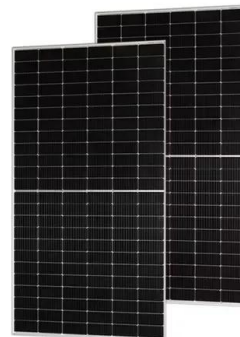
[Product Information](#)



## How Cold Is Too Cold for Batteries?

Prolonged exposure to extremely low temperatures, typically below  $-20^{\circ}\text{C}$  ( $-4^{\circ}\text{F}$ ), can lead to permanent damage. It's essential to store and operate batteries within their ...

[Product Information](#)



## Do Batteries Last Longer in the Cold? Unveiling the Truth About ...

Discover how cold temperatures impact battery life, charging efficiency, and safety. Learn expert tips to optimize lithium-ion, lead-acid, and EV batteries in winter.

[Product Information](#)





### What Happens If You Leave Batteries in Cold Weather?

Leaving batteries in cold weather can significantly impact their performance and lifespan. Cold temperatures can cause a battery's chemical reactions to slow down, leading to ...

#### Product Information



### What Happens To Batteries In Hot And Cold Weather?

In certain batteries, internal resistance is lowest at room temperature, so when the temperature gets too hot the resistance will increase. This might seem like a way to balance ...

#### Product Information

## Contact Us

---

For catalog requests, pricing, or partnerships, please visit:  
<https://www.les-jardins-de-wasquehal.fr>