

Weight of solar panel per square meter





Overview

100-watt solar panels that are 8.53 kilograms and measure 1.19 meters long by 0.16 meters wide have an area of 0.65 square meters. They will weigh 13.12 kilograms per square meter.

The wattages of solar panels can range greatly. While some solar panels power select appliances or RVs, others are powerhouses, and others can power.

Here are some quick facts about the average weight of solar panels with differing wattages: 1. 100-watt solar panels from 5 of the most popular brands average 18.8.

The roofs of current homes can safely support about 20 pounds per square foot. Including the mounting equipment, residential solar panels weigh about 3 to 4.

Generally, typical solar panels weigh around 10 kg to 20 kg or 22 to 44 pounds per square meter. Your rooftop be it an apartment building or single-family home, can take this amount of weight. However, the weight will increase if you add multiple solar panels. How much does a solar panel weigh?

Generally, a solar panel weighs around two to four pounds per sq. ft. Most residential solar panels are 65 inches by 39 inches in size. So, the weight of a typical solar panel in a residential building is around 40 pounds. So, now you can understand how much weight your rooftop has to tolerate for solar panels.

How much do solar panels & mounting equipment weigh?

The typical solar panels and mounting equipment weight is between 10 and 20 kilograms per square meter. This is well within the tolerances of most roofs, meaning there is no need to worry about the extra weight causing any damage. The weight of the panels is often used as an advantage, as it helps to hold the panels in place during high winds.

How much does a 60 cell solar panel weigh?



Every brand of solar panels has slight variations in their dimensions and weights, according to manufacturing material. Although the weight of different brands of solar panels varies, an average 60 cell solar panel weighs about 40 pounds. Other important factors are wattage and voltage/current requirements.

How much does A 72-cell solar panel weigh?

72-cell solar panels weigh around 61.73 pounds. As you may recall, these larger panels usually provide 350 to 400 watts. The weight of a solar panel per unit is an important consideration when deciding which size is best for your home, which we will discuss further in a later section.

How much do Maxeon solar panels weigh?

Its panels are powerful yet light, particularly when you compare them to other brands' efficiencies and weights. For example, residential and commercial M-Series Maxeon solar panels weigh an average of 48 pounds. Meanwhile, other Maxeon series' panels weigh a mere 33 pounds. [Related: What To Know Before Installing Solar Panels].

How much weight do solar panels add to a roof?

When figuring out how much weight do solar panels add to a roof, that would be quite useful data to have. All individual solar panels weigh less than 100 lbs. However, solar systems with 8kW rated capacity and above add more than 1,000 lbs to your roof. Not to worry, however.



Weight of solar panel per square meter



How Much Do Solar Panels Weigh? A Complete Guide To Solar Panels Weight

In general, a 60 cell residential solar panel weighs between 35lbs and 50 lbs (16-22 kg) and can produce between 300 and 400 watts of power. However, a 36 cell flexible (thin ...

[Product Information](#)

[How much does one square meter of solar energy weigh?](#)

How much does one square meter of solar energy weigh? A single square meter of solar panels typically weighs around 15 to 20 kilograms, depending on the type and material ...

[Product Information](#)



[Analyzing Solar Structure Table for One Megawatt System ...](#)

Weight of the solar panel is one live load acting on the solar panels. As per IS standard 875 part -2, any loading that adds in a base structure or component is termed as live loading.

[Product Information](#)

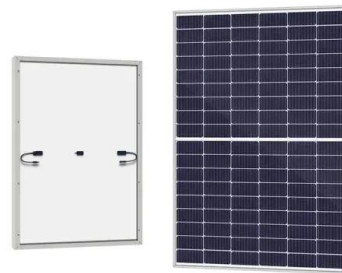


[Solar Panel Sizes & Dimensions \(SA\): Simply Explained](#)

Their dimensions are often around 1.95 meters long and 1 meter wide, covering 1.95 square meters per panel. A side-by-side comparison of residential's and commercial's most common ...



[Product Information](#)



[Roof Structure Design for Solar Panel Installation](#)

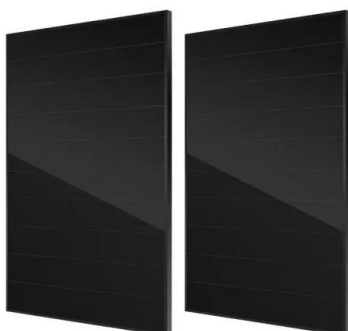
However, on average, a standard 60 solar cells panel, measuring 1.7 square meters, typically weighs around 18 kg (equivalent to 0.10 kN/m²), while a 72 solar cells ...

[Product Information](#)

Solar Panel Weight - WGSi Solar

Average solar panels measure about 65 inches (1.65 meters) by 39 inches (.9 meters), so how does work into a full size rooftop system of solar panels? An average system size of 6 ...

[Product Information](#)



How Much Does A Solar Panel Weight?

Generally, typical solar panels weigh around 10 kg to 20 kg or 22 to 44 pounds per square meter. Your rooftop be it an apartment building or single-family home, can take this ...

[Product Information](#)



[We Analyzed 100 Solar Panels: Dimensions, ...](#)

Power density, measured in watts per square meter (W/m^2), indicates the power output relative to the panel's surface area. Higher efficiency often translates to ...

[Product Information](#)



[Solar Panel Weight Guide: Everything You Should Know](#)

Mono- and polycrystalline solar panels weigh about two to four pounds per square foot (four to twenty kilograms per square meter). Since the roof can handle ...

[Product Information](#)

How Much Do Solar Panels Weigh?

Different manufacturers create solar panels of different weights. On average, solar panels weigh between 10 and 20 pounds per square meter. For a sound roof, this weight won't threaten the ...

[Product Information](#)



[How Big Are Solar Panels? Solar Panel Size and Weight](#)

When people explore solar energy, one of the many things they often want to know is how big the panels are and how heavy they will be once installed. These concerns are ...

[Product Information](#)



[How Much Do Solar Panels Weigh? 1.30 - 2,608.7 lbs ...](#)

We have used this formula to estimate the solar panel and solar system weight ranging from the smallest 10-watt solar panel to the big 20kW solar system. All ...

[Product Information](#)



[Solar Panel Weight Guide: Everything You Should Know](#)

Mono- and polycrystalline solar panels weigh about two to four pounds per square foot (four to twenty kilograms per square meter). Since the roof can handle twenty pounds per square foot, ...

[Product Information](#)

[How Much Do Solar Panels Weigh? 2025 Accurate Top Advice](#)

For example, what is the solar panel weight per square foot? This statistic may be more meaningful for you in figuring out if your roof can bear the weight of solar panels.

[Product Information](#)



[Solar Panels Sizes and Weights \(All Sizes\)](#)

100-watt solar panels that are 8.53 kilograms and measure 1.19 meters long by 0.16 meters wide have an area of 0.65 square meters. They will weigh 13.12 kilograms per ...

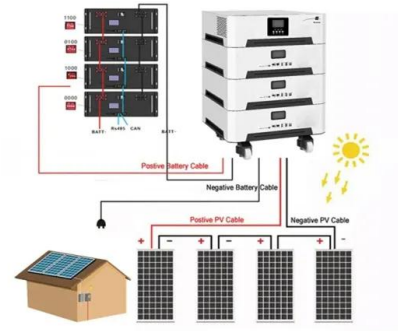
[Product Information](#)



[Solar Panel Size And Weight: A Comprehensive Guide](#)

Though calculating these dimensions can be difficult, this comprehensive guide will explain the importance of solar panels' size and weight, their role in the installation and their ...

[Product Information](#)



[How Much Do Solar Panels Weigh? 1.30 - 2,608.7 lbs Chart](#)

We have used this formula to estimate the solar panel and solar system weight ranging from the smallest 10-watt solar panel to the big 20kW solar system. All the total weights for these ...

[Product Information](#)

Contact Us

For catalog requests, pricing, or partnerships, please visit:
<https://www.les-jardins-de-wasquehal.fr>