

Telecom 5G base station power consumption





Overview

To understand this, we need to look closer at the base station power consumption characteristics (Figure 3). The model shows that there is significant energy consumption in the base station.

How much power does a 5G station use?

The power consumption of a single 5G station is 2.5 to 3.5 times higher than that of a single 4G station. The main factor behind this increase in 5G power consumption is the high power usage of the active antenna unit (AAU). Under a full workload, a single station uses nearly 3700W.

Do 5G base stations consume a lot of energy?

The energy consumption of the fifth generation (5G) of mobile networks is one of the major concerns of the telecom industry. However, there is not currently an accurate and tractable approach to evaluate 5G base stations' (BSs') power consumption.

Is 5G more energy efficient than 4G?

Although the absolute value of the power consumption of 5G base stations is increasing, their energy efficiency ratio is much lower than that of 4G stations. In other words, with the same power consumption, the network capacity of 5G will be as dozens of times larger than 4G, so the power consumption per bit is sharply reduced.

Is 5G base station power consumption accurate?

esan@huawei.com Abstract—The energy consumption of the fifth generation (5G) of mobile networks is one of the major concerns of the telecom industry. However, there is not currently an accurate and tractable approach to evaluate 5G base stations (BSs) power consumption. In this article, we pr.

Does China Mobile have a 5G base station?

China Mobile has tried using lower cost deployments of MIMO antennas, specifically 32T32R and sometimes 8T8R rather than 64T64R, according to



MTN. However, Li says 5G base stations are carrying five times the traffic as when equipped with only 4G, pushing up power consumption.

Why does 5G use so much power?

The main factor behind this increase in 5G power consumption is the high power usage of the active antenna unit (AAU). Under a full workload, a single station uses nearly 3700W. This necessitates a number of updates to existing networks, such as more powerful supplies and increased performance output from supporting facilities.



Telecom 5G base station power consumption



Why does 5g base station consume so much power and how to ...

In addition to other small modules that use electricity, the power consumption of a single 5G base station is generally around 3700 watts, which is about three times that of 4G ...

[Product Information](#)

[Energy-efficient 5G for a greener future](#)

However, the total power consumption of the 5G base station is about four times that of the 4G. Considering the high deployment density of 5G base stations, the overall power ...

[Product Information](#)



Machine Learning and Analytical Power Consumption Models for 5G Base

In this article, we propose a novel model for a realistic characterization of the power consumption of 5G multi-carrier BSs, which builds on a large data collection campaign.

[Product Information](#)



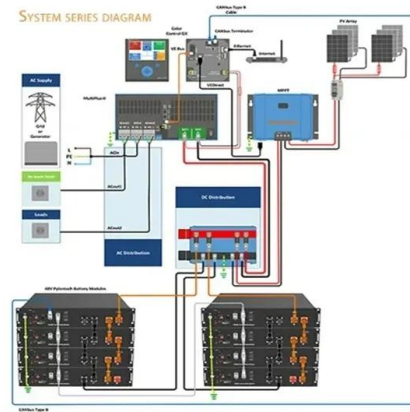
- ☒ TELECOM CABINET
- ☒ BRAND NEW ORIGINAL
- ☒ HIGH-EFFICIENCY

[A technical look at 5G energy consumption and performance](#)

To understand this, we need to look closer at the base station power consumption characteristics (Figure 3). The model shows that there is significant energy consumption in the ...



[Product Information](#)



[What is the Power Consumption of a 5G Base Station?](#)

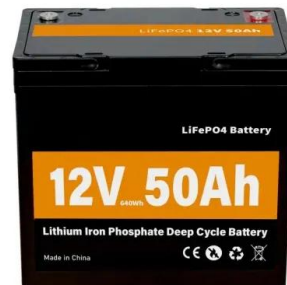
These 5G base stations consume about three times the power of the 4G stations. The main reason for this spike in power consumption is the addition of massive MIMO and ...

[Product Information](#)

[Network energy consumption modeling and performance](#)

5G - by design the most energy efficient cellular generation to date - evolves further with new features and solutions to further improve energy performance.

[Product Information](#)



[Comparison of Power Consumption Models for 5G Cellular ...](#)

This paper conducts a literature survey of relevant power consumption models for 5G cellular network base stations and provides a comparison of the models. It highlights commonly made ...

[Product Information](#)



[Carbon emissions of 5G mobile networks in China](#)

Here we develop a large-scale data-driven framework to quantitatively assess the carbon emissions of 5G mobile networks in China, where over 60% of the global 5G base ...

[Product Information](#)



Measurements and Modelling of Base Station Power Consumption under Real

Power consumption caused by air conditioning can be reduced by minimizing the operational temperature of base station models, or by using additional elements like heat exchangers, ...

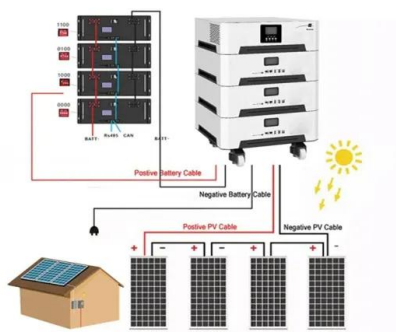
[Product Information](#)



5G Energy Efficiency Overview

Base station resources are generally unused 75 - 90% of the time, even in highly loaded networks. 5G can make better use of power-saving techniques in the base station part, ...

[Product Information](#)



5G base stations use a lot more energy than 4G base stations: MTN

Telcos spend on average 5% to 6% of their operating expenses, excluding depreciation and amortization, on energy costs, according to MTN Consulting. And this is ...

[Product Information](#)



[Front Line Data Study about 5G Power Consumption](#)

The power consumption of a single 5G station is 2.5 to 3.5 times higher than that of a single 4G station. The main factor behind this increase in 5G power consumption is the high power ...

[Product Information](#)



Machine Learning and Analytical Power Consumption Models for ...

In this article, we propose a novel model for a realistic characterization of the power consumption of 5G multi-carrier BSs, which builds on a large data collection campaign.

[Product Information](#)

[Machine Learning and Analytical Power Consumption ...](#)

When symbol shutdown is activated, the AAU switches off the MCPAs, and its power consumption is reduced to the sum of the baseline power consumption, P_0 , the baseband ...

[Product Information](#)



Modeling and aggregated control of large-scale 5G base stations ...

The limited penetration capability of millimeter waves necessitates the deployment of significantly more 5G base stations (the next generation Node B, gNB) than their 4G ...

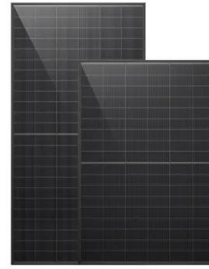
[Product Information](#)



How much power does 5G consume?

One 5G base station is estimated to consume about as much power as 73 households (6), and 3x as much as the previous generation of base stations (5), (7). When base stations, data centers ...

[Product Information](#)



[How Much Power Does 5G Base Station Consume?](#)

Have you ever wondered how much energy our hyper-connected world is consuming? 5G base stations, the backbone of next-gen connectivity, now draw 3-4 times more power than their 4G ...

[Product Information](#)



Energy-Efficient Base Stations

The impact of the Base Stations comes from the combination of the power consumption of the equipment itself (up to 1500 Watts for a nowadays macro base station) multiplied by the ...

[Product Information](#)



Contact Us

For catalog requests, pricing, or partnerships, please visit:
<https://www.les-jardins-de-wasquehal.fr>