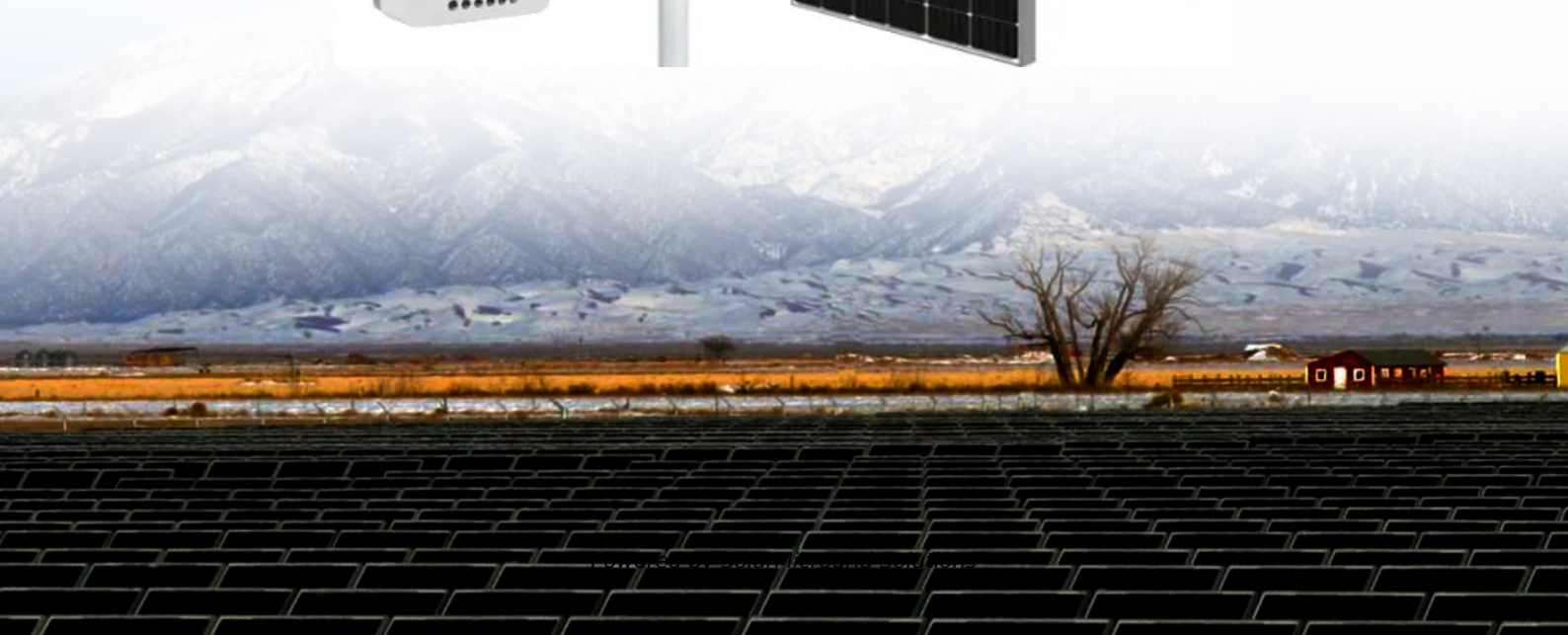


Samoa Prismatic Lithium Battery Size Specifications





Overview

What is a lithium ion prismatic battery?

A Lithium-Ion Prismatic Battery is a type of rechargeable battery that features a rectangular or prismatic shape. These batteries utilize lithium ions to store and release energy during charging and discharging processes, offering a compact design compared to other shapes.

What are prismatic Lithium-ion battery cell specifications?

The prismatic lithium-ion battery cell specifications. [.] Open circuit voltage (OCV) is an important characteristic parameter of lithium-ion batteries, which is used to analyze the changes of electronic energy in electrode materials, and to estimate battery state of charge (SOC) and manage the battery pack.

What is a prismatic battery?

A prismatic battery is a type of lithium-ion cell with a thin, rectangular design. This shape enhances energy efficiency and compactness in battery packs. Prismatic cells are often used in electronics, offering advantages like high energy density. Their specific use cases include powering portable devices where space is crucial.

What are the safety features in prismatic batteries?

Safety features in prismatic batteries include mechanisms to prevent overcharging, overheating, and short circuits. Look for batteries with built-in battery management systems (BMS) that monitor performance and control charging functions.

How to choose a prismatic battery?

When choosing a prismatic battery, consider factors such as energy density, thermal performance, cycle life, safety features, size and shape, and environmental impact. Considering the main factors, let's explore each point in detail. Energy density refers to the amount of energy stored in a battery



relative to its weight or volume.

What are the different types of prismatic batteries?

There are several types of prismatic batteries, including lithium-ion (Li-ion) and lithium polymer (LiPo) variants. Li-ion batteries are commonly used in smartphones and laptops due to their reliability. LiPo batteries are lighter and often found in drones and remote-controlled devices.



Samoa Prismatic Lithium Battery Size Specifications



Lithium Battery Sizes & Models: 18650, 14500, 26650 Explained

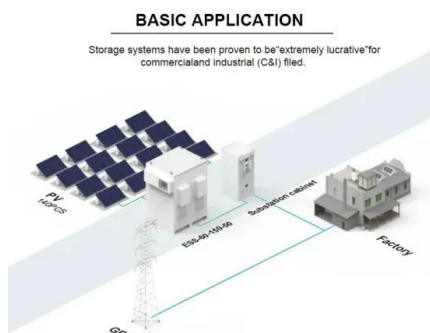
By referencing these size charts, I can easily understand the specifications and models of common cylindrical and prismatic lithium batteries. When purchasing, I make sure to ...

[Product Information](#)

[Lithium Battery Cells: 3 Types You Need To Know](#)

lithium-ion battery cell is a rechargeable battery that uses lithium ions as the primary charge carrier. These batteries are widely used in portable electronic ...

[Product Information](#)



[What Is A Prismatic Battery? Advantages, Types, And Key ...](#)

A Lithium-Ion Prismatic Battery is a type of rechargeable battery that features a rectangular or prismatic shape. These batteries utilize lithium ions to store and release energy ...

[Product Information](#)

[The Ultimate Guide to Prismatic \(LiFePO4 Cell\) Battery](#)

A prismatic battery is a rechargeable battery with a rectangular or square shape. Unlike cylindrical batteries, which are round, prismatic batteries ...



[Product Information](#)



Lithium Battery Specifications: Understanding 18650 and Other ...

What Are the Different Lithium Battery Specifications? While the 18650 cell is widely recognized, lithium-ion batteries come in a variety of other formats to suit specific ...

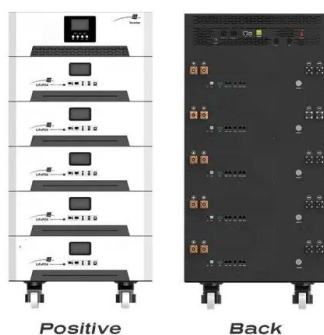
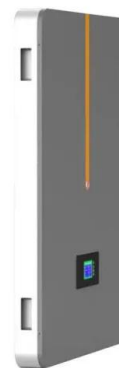
[Product Information](#)



Understanding Different Lithium Battery Sizes: A Comprehensive ...

Understanding battery size and lithium ion battery sizes is crucial for selecting the right power source for your device, as the appropriate lithium battery size can significantly ...

[Product Information](#)



[Cell Form Factors & Lithium Battery Sizes in Pack Design](#)

Lithium-ion cells are the building blocks of battery packs, and they are available in various form factors and sizes. The three primary components of a lithium-ion cell are the ...

[Product Information](#)



[Lithium Equipment Near American Samoa](#)

The Prismatic lithium iron phosphate battery cell is packaged in an aluminum case with a maximum energy density of 185Wh /kg. Prismatic cell is currently the most widely used type in ...

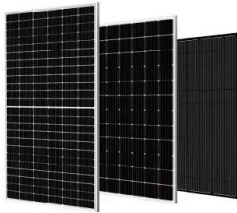
[Product Information](#)



Lithium Ion Batteries: Do They Come In AA Size? Facts, Types, ...

The types of lithium ion batteries include cylindrical cells like 18650 and 21700, and pouch cells utilized in applications like electric vehicles. Each type has unique ...

[Product Information](#)



[EK_Fact-Sheets_BatteryTechnology_2024-06-17dd](#)

400 V Battery system Process reliable and flexible Battery systems from ElringKlinger based on prismatic cells The prismatic lithium-ion battery system from ElringKlinger represents a 400 V ...

[Product Information](#)



Contact Us

For catalog requests, pricing, or partnerships, please visit:
<https://www.les-jardins-de-wasquehal.fr>