

Replace the battery cabinet





Overview

How do I connect a battery cabinet to a ups?

This connection is made from CN14A of the battery cabinet to CN14 of the UPS (and CN14A of battery cabinet 2 to CN24 of battery cabinet 1 if paralleling cabinets). NOTE: Without this connection the battery cabinet will not be able to charge its batteries.

How do I Connect battery cabinet 2 cn14a to cabinet 1?

Connect Battery Cabinet 2 CN14A to cabinet 1 CN24. The Battery cabinet model BC-1825 requires a 240 Vac connection between the UPS and battery cabinet for battery charging. This connection is made from CN14A of the battery cabinet to CN14 of the UPS (and CN14A of battery cabinet 2 to CN24 of battery cabinet 1 if paralleling cabinets).

What is a battery cabinet connector?

The three battery cabinet connector cables (battery positive, battery negative, and battery charger) are each equipped with individually keyed Anderson connectors to prevent cross connecting the battery cabinet and UPS circuitry. The battery cabinet connector cables are six (6) foot in length.

Does a battery cabinet need a DC breaker?

No other battery cabinet connection is needed. Pressing the EPO will cause the breaker on the battery cabinet and the UPS, to switch to the OFF position simultaneously, disabling both the battery cabinet and the UPS. The DC breaker on the battery cabinet is provided with a shunt trip.

How do I store the battery system?

Charge the system's batteries. Place the Battery System's input switch (MCCB-C) in the OFF position. Store within a temperature range of -4 to 104 °F (-20 to 40 °C). For best results, store the Battery System in the original shipping container and place on a wood or metal pallet. The optimum storage



temperature is 70 °F (21 °C).

How do I recycle a Toshiba battery?

Please help our Earth by contacting the environmental protection agencies in your area, the battery manufacturer, or call Toshiba toll-free at (877) 867-8773 for more information about recycling. Install the unit in a well ventilated location; allow at least 10 cm (4 inches) on all sides for air ventilation and maintenance.



Replace the battery cabinet



[310484 Modular Battery Cabinet Keor Mod](#)

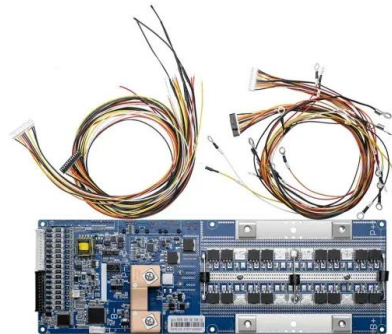
The battery cabinet should be installed in a room with adequate air ventilation flow to avoid dangerous concentration of hydrogen gas that can be produced during battery recharge.

[Product Information](#)

[How to get the battery out of a small remote control](#)

Watch this tutorial to learn the trick how to remove the battery of slim remote controls! You could find all my DIY tutorials in this playlist ? DIY Tutorial

[Product Information](#)



BC58 Battery Cabinet Installation, Operation, & Maintenance ...

Isolates the battery cabinet from the UPS Divides the 540VDC battery string into two (2) battery strings of 270VDC each. Unlocks the battery cabinet doors to allow access to the cabinet ...

[Product Information](#)

8-22kVA BATTERY CABINET

The battery cabinets ship with six-foot long connection cables. Contact Toshiba Customer Support at 1-877-867-8773 if longer cables are required for your application, or if additional cables or ...



[Product Information](#)



[Replace or Install a Modular Battery String](#)

Set the battery disconnect device BB to the open (OFF) position on the UPS and/or the modular battery cabinet where battery modules must be replaced or installed. Remove the battery ...

[Product Information](#)



[How to Install and Set Up a Battery Storage Cabinet at Home](#)

Discover the components and benefits of battery storage cabinet systems, including lithium-ion advantages, placement considerations, ventilation needs, and cost ...

[Product Information](#)



[How to Change a Car Battery: 12 Steps \(with Pictures\)](#)

Automotive batteries don't last forever, even if they're taken care of properly. If you notice your headlights dimming, if your car needs a jump-start due to a dead battery, or if your ...

[Product Information](#)



4400 SERIES BATTERY CABINET

The battery cabinet is equipped with narrow pallet jack or forklift access openings in the front and rear of the cabinet. Move the equipment into the desired location and set in place.

[Product Information](#)



[Eaton Samsung Gen 3 Battery Cabinet Installation and ...](#)

The Eaton® Samsung Gen 3 Battery Cabinet provides power for energy storage and emergency backup power for the Eaton Uninterruptible Power Supply (UPS) systems to enhance the ...

[Product Information](#)

[Liebert® EXS External Battery Cabinet Installer/User Guide](#)

After replacing battery jars in a battery cabinet, replace the retaining straps that hold the jars in place on the shelves. This will limit accidental movement of the jars and connectors should the ...

[Product Information](#)



A battery replacement cabinet that can replace the battery at

A battery replacement cabinet that can replace the battery at any time. With just a few simple steps, you can replace a fully charged battery in just a few sec

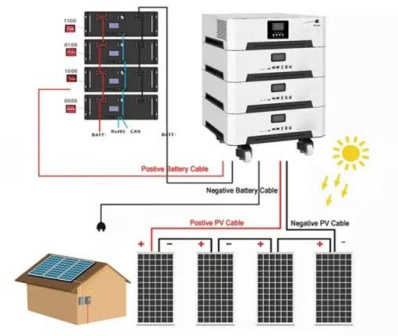
[Product Information](#)



3.6-6kVA BATTERY CABINET

The three battery cabinet connector cables (battery positive, battery negative, and battery charger) are each equipped with individually keyed Anderson connectors to prevent cross ...

[Product Information](#)



[Replace or Install a Modular Battery String](#)

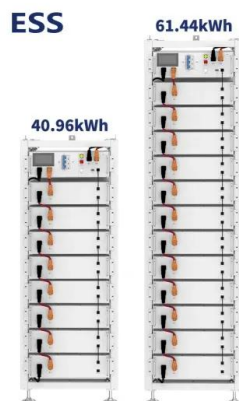
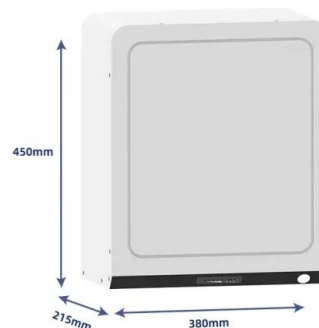
See View the Modular Battery Status to verify correct installation of the battery modules. Reinstall the battery cover on the UPS and/or the modular battery cabinet.

[Product Information](#)

Battery Cabinet

This manual contains information on Atlantic Battery Systems battery cabinets. The information in this manual is intended for Qualified Installers, Equipment Engineers, and Field Support ...

[Product Information](#)



Haworth-MicroIQ-Installation

Installation See Figure 1 for available mounting hardware for the MicroIQ. When mounting the MicroIQ to a cabinet door or drawer, a separately mounted handle should be used to operate, ...

[Product Information](#)



[How to replace the lithium battery of the power cabinet](#)

Install the battery cabinet according to the installation drawings provided. Install the battery cabinet using adjustable leveling legs to ensure the cabinet is level and stable.

[Product Information](#)



BC Series UPS Battery Cabinets

The Battery Management System will recommend batteries to be replaced in the maintenance tab. Follow the Battery Replacement Method of Procedure document for a detail battery ...

[Product Information](#)

Contact Us

For catalog requests, pricing, or partnerships, please visit:
<https://www.les-jardins-de-wasquehal.fr>