

Power of photovoltaic panels in parallel and series





Overview

When we need to generate large power in a range of Giga-watts for large PV system plants we need to connect modules in series and parallel. In large PV plants first, the modules are connected in series known as “PV module string” to obtain the required voltage level. Then many such strings are connected in parallel.

A Solar Photovoltaic Module is available in a range of 3 WP to 300 WP. But many times, we need power in a range from kW to MW. To achieve such a large power, we need to connect N-number of modules in series and parallel. A String of PV Modules When N-number of.

Sometimes the system voltage required for a power plant is much higher than what a single PV module can produce. In such cases, N-number of PV modules is connected in series.

Sometimes to increase the power of the solar PV system, instead of increasing the voltage by connecting modules in series the current is.



Power of photovoltaic panels in parallel and series



[Solar Panel Series and Parallel Calculator](#)

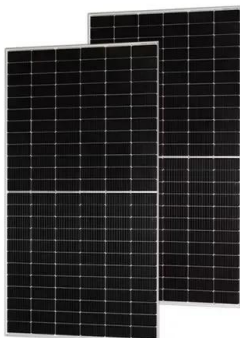
The Solar Panel Series and Parallel Calculator will display the maximum total power output from all panels. That represents the maximum power they could produce if wired ...

[Product Information](#)

[Solar Panel Series vs Parallel . SolarLab](#)

If you are interested in the photovoltaic sector and are about to build a system, you may have had the doubt of whether it is better to install Solar Panel Series vs Parallel . To ...

[Product Information](#)



[Solar Panel Series & Parallel Calculator](#)

Use our solar panel series and parallel calculator to easily find which common wiring configuration maximizes the power output of your solar panels.
1. Find the technical ...

[Product Information](#)

[Chapter number 3.0 Solar Cells, Modules & Arrays](#)

In this process, it is assumed that all PV modules connected in series and in parallel are identical. The PV array power output can also be calculated from PV array voltage ...



[Product Information](#)



Solar Panel Series vs. Parallel: Understanding the Difference and

Solar panels connected in series are linked end to end, creating a chain-like configuration. In this setup, the positive terminal of one panel is connected to the negative ...

[Product Information](#)

[Parallel Connected Solar Panels For Increased Current](#)

How to Connect Solar Panels in Parallel
Photovoltaic solar panels generate a current when exposed to sunlight (irradiance) and we can increase the current ...

[Product Information](#)



[How to Wire Solar Panels in Parallel or Series](#)

Conclusion Understanding how to connect solar panels in series and parallel can help you optimize your off-grid solar power system for the best possible performance. By ...

[Product Information](#)



[Series, Parallel & Series-Parallel Connection of PV Panels](#)

When we need to generate large power in a range of Giga-watts for large PV system plants we need to connect modules in series and parallel. In large PV plants first, the modules are ...

[Product Information](#)



[Series vs Parallel Solar Panels: Key Differences --](#)

...

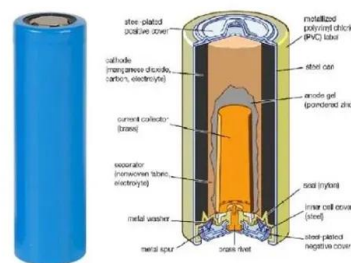
In this article, we'll explain the difference between series and parallel connections, their benefits, and how to choose the best option for your ...

[Product Information](#)

[Solar Panel Series vs Parallel: What's The Difference](#)

Discover the optimal choice between solar panel series vs parallel configurations. Learn how to maximize efficiency and output with our comprehensive guide on ...

[Product Information](#)



[Series vs Parallel Solar Panels Connection \(Ultimate ...](#)

In a parallel connection, the array will have a total power output of 27 watts (3V x 9A). If the first two panels have a 9 volts output, then the total ...

[Product Information](#)



[Solar Panels Series vs Parallel: Understanding and Difference](#)

Learn the differences between wiring solar panels in series vs parallel, and find out which method is best for your system's efficiency, safety, and performance.

[Product Information](#)



[Solar Panel Series vs Parallel: What's The Difference](#)

Discover the optimal choice between solar panel series vs parallel configurations. Learn how to maximize efficiency and output with our comprehensive guide on solar panel series vs parallel ...

[Product Information](#)

[Connecting Solar Panels in Series Vs Parallel](#)

How Connecting Solar Panels in Series Vs Parallel Differs? Connecting PV panels in series increases the voltage but amps remain the same, but in parallel connection, current ...

[Product Information](#)



[Should Solar Panels Be Connected In Series or Parallel?](#)

When designing a solar power system, choosing the right configuration for connecting your solar panels is critical to ensuring optimal performance. This guide will explore ...

[Product Information](#)



[Connecting Solar Panels in Series or in Parallel?](#)

Solar lets you power your life. But first, you need to wire your solar panels in series or parallel. Which is better? Here's your guide to connecting PV panels.

[Product Information](#)



Understanding the series and parallel connection of solar panels

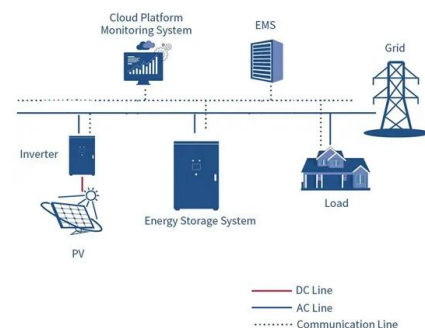
As a rule, engineers want their panels wired using the series, parallel or series-parallel configurations. The ideal choice will depend on several factors, including the ...

[Product Information](#)

Solar Panel Series Vs Parallel: Wiring, Differences, And Your ...

In this tutorial, I'll show you how to wire solar panels in series and how to wire them in parallel. Once we've got that covered, I'll also explain the difference between these ...

[Product Information](#)



[Wiring Solar Panels in Series vs Parallel: Which Is Better?](#)

Whether your panels are wired in series or parallel affects the current flow, voltage, and overall efficiency of your solar setup. The right configuration depends on factors like your system's ...

[Product Information](#)



[Wiring Solar Panels in Series vs Parallel: Which Is ...](#)

Whether your panels are wired in series or parallel affects the current flow, voltage, and overall efficiency of your solar setup. The right configuration ...

[Product Information](#)



[Solar Panel Series Vs Parallel: Wiring Differences, ...](#)

In this tutorial, I'll show you how to wire solar panels in series and how to wire them in parallel. Once we've got that covered, I'll also explain the ...

[Product Information](#)

Contact Us

For catalog requests, pricing, or partnerships, please visit:
<https://www.les-jardins-de-wasquehal.fr>