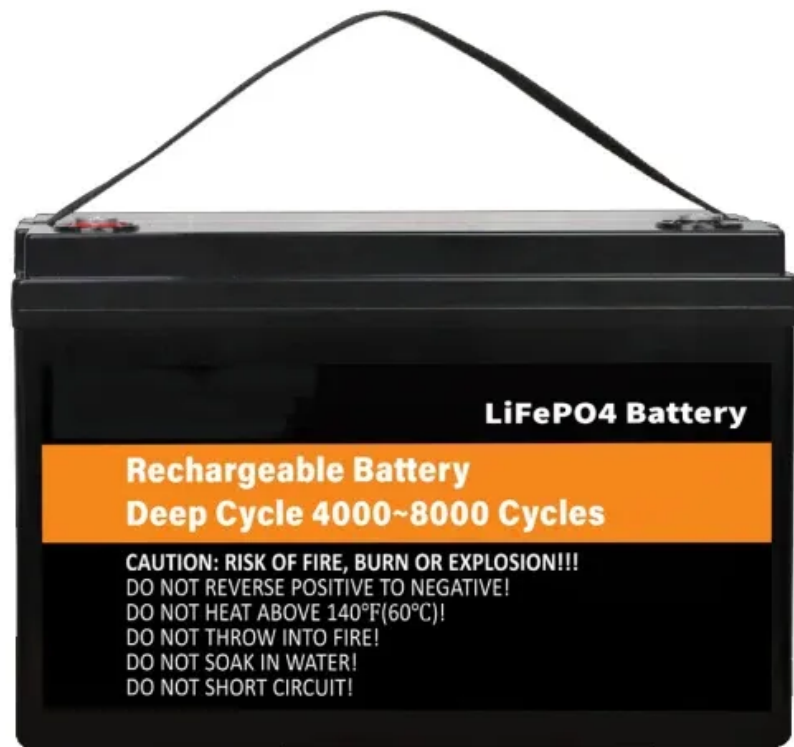


Photovoltaic panels generate electricity in 100 square meters





Overview

The potential electricity generated by solar energy per 100 square meters is approximately 10,000 to 20,000 watts annually, depending on various factors including location, weather conditions, and technology utilized. 2.How much energy do solar panels produce per square foot?

Solar panels are a great way to produce renewable energy and help reduce your carbon footprint. But how much energy do solar panels actually produce per square foot?

The average home has about 1,000 square feet of roof space, so if you install 250-watt solar panels, you can expect to generate about 250 kilowatts (kW) of power.

How many Watts Does a solar panel produce?

Solar panels are a great way to produce renewable energy and they're becoming more and more popular as the technology improves. On average, a typical solar panel will produce around 100 watts of power per square foot.

How much power can a 100m² roof produce?

When panel efficiency reaches 30%, a 100m² roof could generate 50,000kWh/year – enough to power 20 average homes. The solar revolution isn't coming; it's already here. Solar panels have become a cornerstone of renewable energy, but many wonder: How much power can a single square meter of solar panels actually produce?

.

Why is solar energy per square meter important?

Measuring solar energy per square meter helps evaluate electricity generation capabilities and is crucial for assessing solar panels' effectiveness and solar farms' ability to harness sunlight and reduce fossil fuel dependence, which contributes to climate change. What is Solar Energy Per Square Meter?



How much does a 100 square foot Solar System cost?

Installing 100 square feet of solar panels will typically cost between \$1,000 and \$2,000. So the total cost for a 100 square foot system would be between \$1,250 and \$4,000. The good news is that solar panel costs have been falling rapidly in recent years thanks to advancements in technology and increases in production capacity.

How do you calculate solar energy per square meter?

This process helps estimate potential electricity generation, making it crucial for anyone optimizing solar panel installations. The formula for calculating solar energy per square meter is: $E = A \times G \times \eta$. Here: This helps meet daily energy needs and balance energy usage efficiently. Each variable significantly influences overall energy production.



Photovoltaic panels generate electricity in 100 square meters



[How Much Electricity Does 1 Square Meter \(m2\) Solar Panel ...](#)

Assuming an average efficiency of 20%, which is typical for 100 square meter solar panels with a power of 211 watts per square meter, and an average exposure to sunlight of 5 hours per day, ...

[Product Information](#)

How Much Electricity Can 100 Square Meters of Photovoltaic Panels Generate

This guide breaks down electricity generation from 100m² photovoltaic panels, explores real-world applications, and reveals how solar solutions like those from EK SOLAR empower homes and ...

[Product Information](#)



How Much Electricity Does 1 Square Meter (m2) Solar Panel Generate?

Assuming an average efficiency of 20%, which is typical for 100 square meter solar panels with a power of 211 watts per square meter, and an average exposure to sunlight of 5 hours per day, ...

[Product Information](#)



Solar Panel Output per Square Meter: Efficiency Factors & Future ...

When panel efficiency reaches 30%, a 100m² roof could generate 50,000kWh/year - enough to power 20 average homes. The solar revolution isn't coming; it's already here.



[Product Information](#)



[FREE] Solar (photovoltaic) cells convert sunlight directly into

Solar (photovoltaic) cells convert sunlight directly into electricity. If solar cells were 100% efficient, they would generate about 1000 watts of power per square meter of surface ...

[Product Information](#)



How much electricity can be generated by solar energy per 100 square

The potential electricity generated by solar energy per 100 square meters is approximately 10,000 to 20,000 watts annually, depending on various factors including ...

[Product Information](#)



[Solar Energy Per Square Meter: How Much Power Can You Get?](#)

Solar energy per square meter refers to the amount of solar radiation impacting a specific area, measured in kilowatts per square meter (kW/m^2). This measurement is a key ...

[Product Information](#)



How much electricity can solar energy generate per 100 square meters

Quantifying solar energy generation potential entails integrating irradiance metrics and panel efficiency factors. This section elucidates how prospective generation capacity is ...

[Product Information](#)



How Much Electricity Can 100 Square Meters of Photovoltaic ...

This guide breaks down electricity generation from 100m² photovoltaic panels, explores real-world applications, and reveals how solar solutions like those from EK SOLAR empower homes and ...

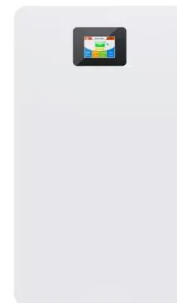
[Product Information](#)



How Much Energy Do Solar Panels Produce Per Square Foot?

However, on average, a solar panel will produce around 100 watts of electricity per square meter (10 square feet). So, for example, a typical residential solar panel measuring 1.6 ...

[Product Information](#)



Solar Panel Watts Per Square Meter Explained

Compare solar panels to see which generates most electricity per square meter. A higher W/m value means a solar panel produces more power from a given area. This can help you ...

[Product Information](#)





[Solar Rooftop Calculator , Solar Panel Calculator](#)

Online Solar Roof Top Calculator Calculates the number of solar panels, kilowatt capacity, daily unit production, and require area in Square Meter as well as Square Feet based on the ...

[Product Information](#)

50KW modular power converter



[100 square meters of solar photovoltaic power generation](#)

How much energy does a solar panel produce per square meter? For example, a solar panel with an efficiency of 15% would produce 150 W/m²; when it receives 1000 W/m² of solar ...

[Product Information](#)

How much electricity can be generated by solar energy per 100 ...

The potential electricity generated by solar energy per 100 square meters is approximately 10,000 to 20,000 watts annually, depending on various factors including ...

[Product Information](#)



Use these facts in the following exercises: Solar (photovolt , Quizlet

Find step-by-step Business maths solutions and the answer to the textbook question Use these facts in the following exercises: Solar (photovoltaic) cells convert sunlight directly into ...

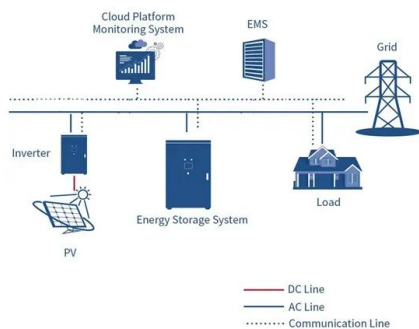
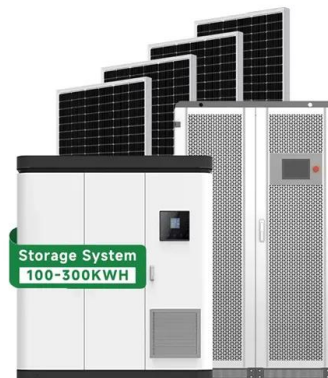
[Product Information](#)



Solar Panel Calculator

A typical value might be around 15-20%.
Calculate Total Solar Panel Power (W): Use the formula above to find out how much total power your solar panels need to produce. Calculate Total ...

[Product Information](#)



[SOLAR POWER PER SQUARE METER CALCULATOR](#)

100 square meter sun room photovoltaic power generation solar energy Wattage is the output of solar panelsthat is calculated by multiplying the volts by amps. Here, the amount of the force of ...

[Product Information](#)

[How much energy do solar panels produce for your...](#)

More people are beginning to see the numerous benefits solar panels can bring, both environmentally and financially. Learn exactly how much electricity solar ...

[Product Information](#)



Contact Us

For catalog requests, pricing, or partnerships, please visit:
<https://www.les-jardins-de-wasquehal.fr>