

# **Is power generation included in the substation design**





## Overview

---

What is an electric power substation?

For the most part, electric power substations are viewed as the most integral part of a power utilities' electric system, with electric systems being comprised of power generation, transmission, and distribution systems. (See A Basic Explanation Summary of How the Electric Power Grid Works).

What is a Generator Substation?

Generating substations step up the voltage from the generator's lower voltage to a higher voltage which is more suitable, and more economical for transmitting electric power over longer distances with less power losses caused by the impedances of transmission lines.

What is a substation & how does it work?

(See A Basic Explanation Summary of How the Electric Power Grid Works)  
Substations are power stations that include power transformers, potential or voltage transformers, current transformers, electrical bus, breakers, switches, and so on.

What are the different types of power generation substations?

There are different types of power generation substations, including thermal, nuclear, and hydroelectric, each utilizing specific energy sources to generate electricity efficiently. The location of these substations depends on resource availability, but they are often situated far from load centers (areas with high electricity demand).

How do I choose the right electrical substation layout & configuration?

The choice of electrical substation layout and configuration depends on the specific requirements of the power system, load demand, voltage levels, and safety considerations. An effective substation design ensures reliable power distribution, efficient operation, and ease of maintenance and expansion.



Why are power substations important?

Power substations play a critical role in the efficient and reliable transmission and distribution of electricity. These vital infrastructures facilitate the transformation of electrical energy to appropriate voltage levels, and ensure a safe and reliable power supply to end users.



## Is power generation included in the substation design

---



### Power Substation Design: An Overview of One Critical Element of

A power substation serves as a crucial link between power generation sources and end users. It functions as a hub for transforming electrical energy to different voltage levels, ...

[Product Information](#)

### Substation & Switchyard Design Considerations: Size, Load, Cost

Switchgear and substations, comprised of disconnectors, circuit breakers, busbars, and earth switches, are crucial in dispatching electric power from the power generation source ...

[Product Information](#)



### Electrical Substation Advanced Guide: Design, Components, and

It plays a vital role in maintaining the balance between power generation and demand, enabling power companies to deliver electricity to various locations at the appropriate voltage levels.

[Product Information](#)

### [Electrical Substation Components and Their Workings](#)

A substation has protection devices that safeguard the electrical system against faults, ensuring the power quality delivered to customers meets regulatory ...



## [Product Information](#)



## [What You Need to Know About Substation Design](#)

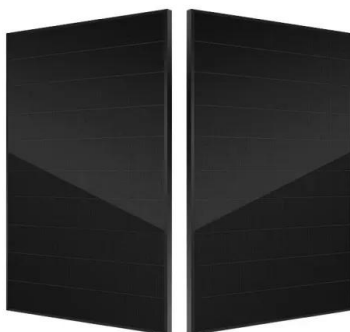
Whether supplying electricity to residential neighborhoods or powering large industrial facilities, well-designed substations are the backbone of any electrical grid. These substations regulate ...

## [Product Information](#)

## [Substation Design , PDF , Electrical Substation](#)

Substation Design Guide to follow in order to adhere to their standard procedure in ground grid design. This design included 16 steps to produce a functional ...

## [Product Information](#)



## [Basics of Designing Power Substations](#)

For the most part, electric power substations are viewed as the most integral part of a power utilities' electric system, with electric systems being comprised of power generation, ...

## [Product Information](#)



## STEP BY STEP DESIGNING AN ELECTRICAL SUBSTATION

Designing an electrical substation involves multiple steps to ensure it meets the necessary requirements for safety, efficiency, and reliability. Here is a step-by-step overview of ...

### Product Information



### The Impact of New Power Substation Classifications ...

These classifications typically included transmission substations, distribution substations, and customer substations. Transmission substations, operating at ...

### Product Information



### How It Works: Electric Transmission & Distribution and ...

Substations serve as critical nodes connecting generation, transmission, and distribution networks. While substations are used for several distinct system functions, most utilize electric ...

### Product Information



### **eTool : Electric Power Generation, Transmission, and Distribution**

A step-up transmission substation receives electric power from a nearby generating facility and uses a large power transformer to increase the voltage for transmission to distant locations. A ...

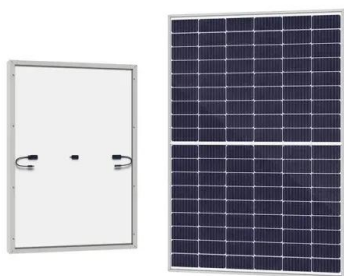
### Product Information



## The basic things about substations you MUST know in the middle ...

Substations serve as critical nodes connecting generation, transmission, and distribution networks. While substations are used for several distinct system functions, most utilize electric ...

[Product Information](#)



[Electrical Substation Advanced Guide: Design, ...](#)

It plays a vital role in maintaining the balance between power generation and demand, enabling power companies to deliver electricity to various locations ...

[Product Information](#)

## Types of Substations and Functions

As the demand for electrical power continues to grow, it can be met through power generation substations. There are different types of power generation substations, including thermal, ...

[Product Information](#)



## Understanding Substation Design: Principles and Considerations ...

The landscape of substation design is undergoing a transformative shift, primarily driven by the increasing integration of renewable energy sources into the power grid.

[Product Information](#)



### **The basic things about substations you MUST know in the middle ...**

In a less simple way, substation is the key part of electrical generation, transmission, and distribution systems. Substation transforms voltage from high to low or from low to high as ...

[Product Information](#)



## **Contact Us**

---

For catalog requests, pricing, or partnerships, please visit:  
<https://www.les-jardins-de-wasquehal.fr>