

Inverter Cabinet Installation





Overview

How do I install an inverter?

Install at an appropriate height for ease of viewing LED indicators and operating switches. The inverter(s) must be installed on a structure with a load-bearing capacity of >4 times the inverter weight. Install the inverter vertically or at a minimum back tilt of 10° . Forward installation or upside-down installation is prohibited.

How much power does a control cabinet inverter have?

Our inverters for control cabinet installation have a power range from 0.33 to 215 HP and can be customized with optional plug-in modules. Variable cooling solutions ensure optimum heat dissipation. Why Control Cabinet Inverters From NORD?

High Performance NORD inverters for control cabinet installation provide high precision speed control.

How do you remove an inverter from a cabinet?

Switch the inverter off using the front panel ON/OFF switch (if the remaining inverters in the system cannot take over the load, the SBS will transfer the connected load to the mains supply). Remove the four retaining screws. Pull the unit out of the front of the cabinet. (Attention! See warning statement in paragraph 4.4.2).

Which frequency inverters are suitable for control cabinets?

No matter where you are in the world, our drives are your solution. We have developed the NORDAC PRO family of frequency inverters specifically for installation in control cabinets. These inverters are equally suitable for operating synchronous and asynchronous motors and meet all customer requirements thanks to a wide range of custom options.

How much does an inverter cabinet weigh?



The Inverter Cabinet weighs up to 700lb (340kg) net and up to approximately 850 lbs.(386kg) packed. It is mandatory that necessary precautions be taken to lift, move, set and position the cabinets. Using an appropriate number of people or the proper lifting device lift the cabinet off the shipping pallet.

How do I set up a commercial inverter system?

Connect the commercial AC mains to the AC bypass input. Switch on all inverter modules. Switch off the mains from the by-pass. OPERATION” go out and the red LED “FAULT” lights up. Also an outgoing alarm shall be given after approximately 10 seconds. Connect a voltmeter to the output of the inverter system.



Inverter Cabinet Installation



[PV Inverter Quick Installation Guide](#)

This instruction only provides an overview of the installation of the above-mentioned inverters. Due to product version upgrades or other reasons, this guidance will be updated irregularly. ...

[Product Information](#)

[Step-by-Step Guide to Installing a Home Inverter System](#)

Learn how to install a home inverter system for reliable backup power during outages. Our guide covers system sizing, wiring, safety precautions, and maintenance tips for a successful and ...

[Product Information](#)



3. Installation

Do not expose the inverter to rain or moisture. Install the inverter in a dry and well-ventilated area. For best operating results, the inverter should be mounted on a flat surface. Mount as close as ...

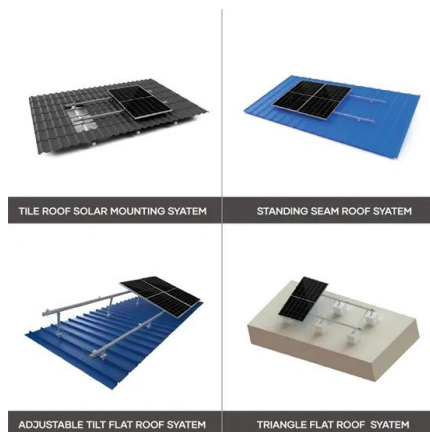
[Product Information](#)

Installation and Wiring Requirements for Variable Frequency Drive

Before installing the inverter, the installation environment must be determined, and then a suitable installation method should be used. When wiring the inverter, the main circuit and control ...



[Product Information](#)



[Hardware Manual i55AE__i550 Cabinet 0.25-75kW](#)

Project planning Procedure of an inverter configuration process Dimensioning Operation in motor and generator mode Overcurrent operation Safety instructions Application as directed ...

[Product Information](#)

APPLICATION SCENARIOS



[KIT Hybrid Inverter & Lithium Battery Cabinet](#)

KIT. All-in-one hybrid inverter charger and powerful lithium bat cabinet. Grid tie, battery back up, net metering, load share and generator. Pre-wired bat cabinet ...

[Product Information](#)



[115072g.LV Series Manual _Types 1, 2 & 3_](#)

Once all batteries are in the cabinet, using the red wire provided, push the wire through the conduit hole in shelf of the cabinet and make the connection on the positive terminal point on ...

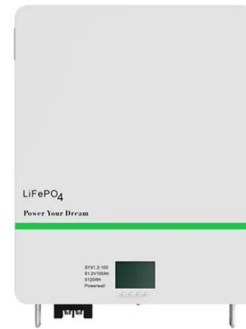
[Product Information](#)



[NORD Inverters for Control Cabinet Installation . NORD](#)

We have developed the NORDAC PRO family of frequency inverters specifically for installation in control cabinets. These inverters are equally suitable for operating synchronous and ...

[Product Information](#)



[How to Install a Power Inverter? - Powerinverter](#)

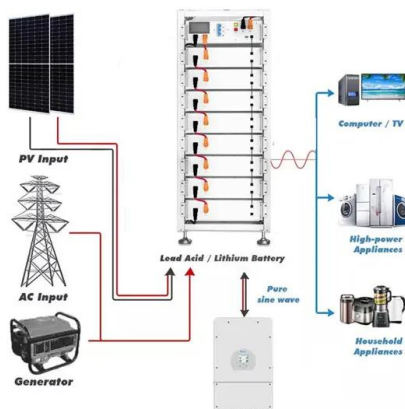
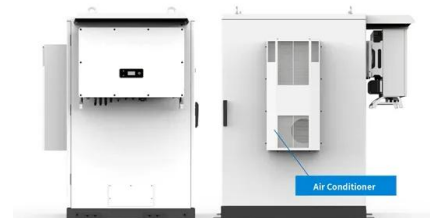
The success of a DC to AC power inverter installation depends mainly on the methods and materials used for the installation. Low DC input voltage inverters (12 or 24 Volts DC) require ...

[Product Information](#)

[Installation and Wiring Requirements for Variable ...](#)

Before installing the inverter, the installation environment must be determined, and then a suitable installation method should be used. When wiring the ...

[Product Information](#)



Battery Cabinets

The cabinets are sized to enable mounting of all inverters and charge controllers in the same panel. This makes the installation much safer, whilst keeping all equipment out of sight and ...

[Product Information](#)



[Power Inverter Installation , Magnum Dimensions](#)

Introduction The success of a DC to AC power inverter installation depends mainly on the methods and materials used for the installation. Low DC input voltage inverters (12 or 24 Volts ...

[Product Information](#)



[Operating instructions BA_i510-C 0.25-15kW](#)

5.2 EMC-compliant installation The drive system (inverter and drive) complies with the EMC Directive 2014/30/EU if it is installed according to the guidelines for CE-typical drive systems. ...

[Product Information](#)

[Installation Instructions and User Manual](#)

Before installing the batteries, install the LSN inverter system and any battery cabinets in their permanent location. See Section 103 to choose a location and Section 104 for instructions on ...

[Product Information](#)



[Contractors Guide Central Inverter System Installation](#)

If using Horizontal mounting, secure the Inverter cabinet to the left of the battery cabinet for proper battery cable routing from Battery Cabinet to Electronics Cabinet. Note - Uneven surfaces may ...

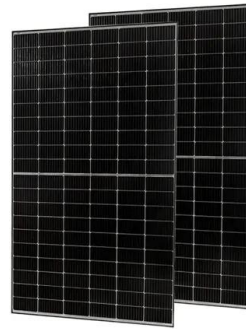
[Product Information](#)



SUNNY CENTRAL 200 / 250 / 250HE / 350

Follow the instructions in the enclosed documentation of the switch cabinet manufacturer to connect the two switch cabinets to one another. The assembly procedure is described there.

[Product Information](#)



[Installation, Operations & Maintenance Manual](#)

This operating manual contains important information for the installation, operation, and maintenance of the inverter system. This manual must be retained and observed at all times!

[Product Information](#)

[Installation Instructions and User Manual](#)

102.3 Temporary Storage of Units and Batteries
For temporary storage of Synchron inverter systems and batteries prior to installation, select a clean, cool, dry location with normal ...



[Product Information](#)



[How to Install cabinet batteries and Inverters](#)

Installation Video for cabinet battery and inverters, step-by-step guide teaches you how to install the MOTOMA LiFePO4 solar storage battery and solar hybrid inverter.

[Product Information](#)



[Step-by-Step Guide to Installing a Home Inverter System](#)

Learn how to install a home inverter system for reliable backup power during outages. Our guide covers system sizing, wiring, safety precautions, and ...

[Product Information](#)



Voltage range: 691.2-947.2V
>6000 cycles (100% DOD)
Rated battery capacity:
216KWH (customizable)
EMS communications:
4G/CAN/RS485

[Frequency inverter for control cabinet application](#)

NORDAC PRO - SK 500P NORDAC PRO SK 500P frequency inverters are available for motors with rated powers from 0.25 to 22.0 kW (up to 160 kW, in preparation) (15/18.5/22 kW available ...

[Product Information](#)

[Contractors Guide Central Inverter System Installation](#)

Prepare floor so that it is level and smooth. Secure Cabinet into floor using Concrete Wedge Anchors or other suitable method. Hardware provided by others. Note - Uneven surfaces may ...

[Product Information](#)



[Frequency inverter for control cabinet application](#)

NORDAC PRO - SK 500P NORDAC PRO SK 500P frequency inverters are available for motors with rated powers from 0.25 to 22.0 kW (15/18.5/22 kW available for SK 530P and higher). ...

[Product Information](#)





Contact Us

For catalog requests, pricing, or partnerships, please visit:
<https://www.les-jardins-de-wasquehal.fr>