

How much space does the energy storage power station occupy





Overview

Generally, a 1MW lithium-ion storage facility occupies approximately 1 to 2 acres of land. This area accounts for the battery modules, cooling systems, inverters, and associated infrastructure. The notable advantage of lithium-ion technology is its modularity. What are battery storage power stations?

Battery storage power stations are usually composed of batteries, power conversion systems (inverters), control systems and monitoring equipment. There are a variety of battery types used, including lithium-ion, lead-acid, flow cell batteries, and others, depending on factors such as energy density, cycle life, and cost.

What is the power capacity of a battery energy storage system?

As of the end of 2022, the total nameplate power capacity of operational utility-scale battery energy storage systems (BESSs) in the United States was 8,842 MW and the total energy capacity was 11,105 MWh. Most of the BESS power capacity that was operational in 2022 was installed after 2014, and about 4,807 MW was installed in 2022 alone.

What is the construction process of energy storage power stations?

The construction process of energy storage power stations involves multiple key stages, each of which requires careful planning and execution to ensure smooth implementation.

What is an energy storage system?

An energy storage system (ESS) for electricity generation uses electricity (or some other energy source, such as solar-thermal energy) to charge an energy storage system or device, which is discharged to supply (generate) electricity when needed at desired levels and quality. ESSs provide a variety of services to support electric power grids.

How many energy storage projects are planned in 2023?



All other planned energy storage projects reported to EIA in various stages of development are BESS projects and have a combined total nameplate power capacity additions of 22,255 MW planned for installation in 2023 through 2026. About 13,881 MW of that planned capacity is co-located with solar photovoltaic generators.

Why do battery storage power stations need a data collection system?

Battery storage power stations require complete functions to ensure efficient operation and management. First, they need strong data collection capabilities to collect important information such as voltage, current, temperature, SOC, etc.



How much space does the energy storage power station occupy



Energy company opens multibillion-dollar facility size of 13 ...

One of the largest solar-and-storage power generating facilities in the U.S. has come online in Southern California, immediately providing 7% of all of L.A.'s power needs.

[Product Information](#)

Does the energy storage power station occupy transformer capacity

A high proportion of renewable generators are widely integrated into the power system. Due to the output uncertainty of renewable energy, the demand for flexible resources is greatly increased ...

[Product Information](#)



[Energy Storage Power Station Project Land Area: What You ...](#)

When we talk about energy storage power station project land area, we're not just discussing dirt and concrete. This topic matters to: Fun fact: The average 100MW lithium-ion ...

[Product Information](#)



How much land does a 1MW energy storage power station occupy?

Generally, a 1MW lithium-ion storage facility occupies approximately 1 to 2 acres of land. This area accounts for the battery modules, cooling systems, inverters, and associated ...



[Product Information](#)



Land-Use Requirements of Modern Wind Power Plants in the ...

Although there is no uniformly accepted single metric of land use for wind power plants, two primary indices of land use do exist - the infrastructure/direct impact area (or land temporarily ...

[Product Information](#)



[Calculating Solar Energy's Land-Use Footprint](#)

New Hampshire, USA -- New statistics from the National Renewable Energy Laboratory (NREL) reveal exactly how much land is needed to site a solar plant of various ...

[Product Information](#)



Support Customized Product



[How much area does solar energy installation occupy?](#)

On average, a 1 MW solar installation can occupy between 4 and 5 acres. When calculating space for commercial utilization, it is crucial to also weigh the potential future ...

[Product Information](#)



[Leasing Vacant Land Near Substations: Solar Wind Farms](#)

In regions such as Rhode Island or Massachusetts, YSG would handle clearing the land, and also re-plant smaller plants to help the environment. How flat does my land need to ...

[Product Information](#)



[How much space does large energy storage occupy](#)

a 1000 degree energy storage device occupy? 1. The amount of land needed for a 1000-degree energy storage device can vary significantly based on several factors, including technolog

[Product Information](#)



A Simple Guide to Energy Storage Power Station Operation and ...

In this blog post, we'll break down the essentials of energy storage power station operation and maintenance. We'll explore the basics of how these systems work, the common ...

[Product Information](#)



[HOW MUCH LAND AREA DOES THE POWER STORAGE...](#)

Kokam's new ultra-high-power NMC battery technology allows it to put 2.4 MWh of energy storage in a 40-foot container, compared to 1 MWh to 1.5 MWh of energy storage for standard NMC ...

[Product Information](#)





[Battery storage power station - a comprehensive guide](#)

This article provides a comprehensive guide on battery storage power station (also known as energy storage power stations). These facilities play a crucial ...

[Product Information](#)



[Energy Storage Power Station Costs: Breakdown & Key Factors](#)

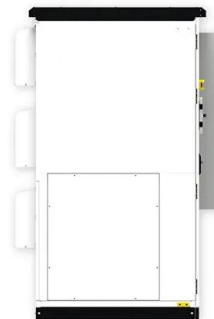
3 days ago · Discover the true cost of energy storage power stations. Learn about equipment, construction, O& M, financing, and factors shaping storage system investments.

[Product Information](#)

Electricity explained Energy storage for electricity generation

In 2022, the United States had four operational flywheel energy storage systems, with a combined total nameplate power capacity of 47 MW and 17 MWh of energy capacity.

[Product Information](#)



[How much land does a 1MW container energy storage power ...](#)

How much land does a 1MW container energy storage power station occupy What is 1 MW battery storage? As the world continues to shift towards renewable energy storage,the need ...

[Product Information](#)



How many square meters is the energy storage power station?

1. Energy storage power stations can vary significantly in size based on technology and capacity requirements, but typically, 1. land area utilization is influe...

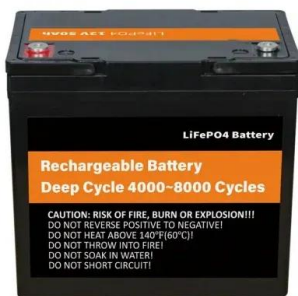
Product Information



How many acres does Yingcheng Energy Storage Power Station occupy

The Yingcheng Energy Storage Power Station occupies approximately 1,500 acres, consisting of various sections dedicated to its operational components, including battery ...

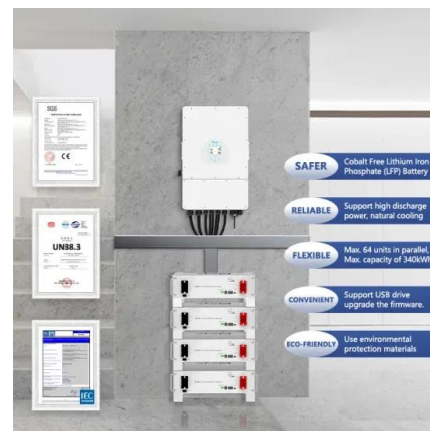
Product Information



does the energy storage power station occupy transformer capacity

By interacting with our online customer service, you'll gain a deep understanding of the various does the energy storage power station occupy transformer capacity featured in our extensive ...

Product Information



LPR Series 19" Rack Mounted



How much land does a 300mw compressed air energy storage power station

The power station, with a 300MW system, is claimed to be the largest compressed air energy storage power station in the world, with highest efficiency and lowest ...

Product Information



[Battery storage power station - a comprehensive guide](#)

This article provides a comprehensive guide on battery storage power station (also known as energy storage power stations). These facilities play a crucial role in modern power grids by ...

[Product Information](#)



[How much land does a shared energy storage station occupy?](#)

To determine the land occupation of a shared energy storage station, several factors must be considered. Important aspects include: 1. Size of the storage technology utilized, 2. ...

[Product Information](#)

[500kW Solar System Information - Facts & Figures](#)

On This Page: How Much Energy Does a 500kW System Produce? How Much Space Will It Take Up? How Much Does a 500kW System Cost? How Much Energy Does It Produce? Other solar ...

[Product Information](#)



Contact Us

For catalog requests, pricing, or partnerships, please visit:
<https://www.les-jardins-de-wasquehal.fr>