

How many watts does a solar integrated machine use in winter





Overview

Do solar panels generate more energy in the winter?

In the winter, most solar panels generate 32% less energy than they do in the summer. This, however, is related to your location and light levels, not the panels. A 5-kWh solar system generates 21kW per day on average throughout the summer. (Depending on the state, this may differ slightly.) This equates to over 600kWh per month.

How does winter affect solar power?

The lower temperatures experienced in the winter months are actually a plus for generating solar. Solar panels operate more efficiently at lower temperatures. It is not the lack of heat that impacts on solar output in winter, rather it is the reduced sunshine hours.

How much solar power does Australia produce in winter?

Contrast this to Melbourne where solar output is only 50% of average annual output. The table below shows winter output in major Australian cities for a 6.6kW system. The lower temperatures experienced in the winter months are actually a plus for generating solar.

Can solar panels work in snow?

Yes, solar panels can even work in the snow. If the panels have enough tilt, snow will simply slide off the modules as it melts. Once the panel is free of snow and receiving sunlight, it will start working to produce electricity again. It is not even necessary to clean your panels to remove the snow.

How much energy does a 5 kWh solar system generate?

A 5-kWh system generates $5 \times 2.6 = 14\text{kWh}$ per day in the winter. This adds up to 390kWh per month. This translates to a 35% reduction in electricity generation throughout the winter. What about Solar in the Snow?



How much power does a 3 kW sinewave inverter use?

There two primary areas effecting idle current. High frequency MOSFET drive switching is usually the dominate idle consumption but a poorly designed output PWM low pass filter can add to idle losses by having a high reactive power factor load. Generally a 3 kW sinewave high freq inverter is 30 to 50 watts of full idle power.



How many watts does a solar integrated machine use in winter



[The Complete Off Grid Solar System Sizing Calculator](#)

Using your daily energy usage and Peak Sun Hours, and assuming a system efficiency of 70%, the calculator estimates the Wattage required for your off-grid solar system's ...

[Product Information](#)

[How Much Electricity \(kWh\) Do Air Conditioners Use?](#)

How much electricity do air conditioners use? Quite a lot, actually. According to EIA, US households used 235 billion kWh (kilowatt-hours) of electricity just for ...

[Product Information](#)



[How Many Watts Does a Washing Machine Use? A Complete ...](#)

While older, less efficient machines can use up to 1300 watts per hour, high-efficiency washers typically utilize 500 to 800 watts per hour, using less water and power. How ...

[Product Information](#)

[How Much Power Does a Solar Inverter Use: An Overview](#)

A single solar inverter can use as much as 40 watts. This is even when not in use or during the night. This fact shows how important it is to know about inverter power use. ...



[Product Information](#)



To Strive forward No Energy Waste



- ✓ All in one
- ✓ 100~215kWh High-capacity
- ✓ Intelligent Integration

[How Much Electricity Does Solar Generate In Winter...](#)

The amount of electricity generated from a solar panel system during the winter months largely depends on factors such as location, weather conditions and ...

[Product Information](#)

[How Much Electricity Does Solar Generate In Winter Months](#)

The amount of electricity generated from a solar panel system during the winter months largely depends on factors such as location, weather conditions and the quality of the solar panels used.

[Product Information](#)



Does Solar Power Work in the Winter? Our 7 Most Commonly ...

But there are many common misconceptions about how well solar systems can work in the wintertime. The long answer is a bit more nuanced, so in this post, we're going to ...

[Product Information](#)



How many watts does the solar energy storage and control integrated

For residential use, systems may range from 1,000 watts to 5,000 watts, while larger commercial or industrial systems can exceed 10,000 watts, sometimes reaching several ...

[Product Information](#)



Do Solar Panels Work in Winter? , Better than you might think!

Yes, solar panels work in winter. Solar panels work by converting sunlight into electricity, not heat. Although there are less available sunlight hours in winter months, a solar panel system can ...

[Product Information](#)

How much power does an Inverter use just sitting there idling?

Generally a 3 kW sinewave high freq inverter is 30 to 50 watts of full idle power. A high frequency inverter has two primary stages. First stage is high frequency DC to DC ...

[Product Information](#)



[How Much Energy Does a Solar Panel Produce in](#)

In the winter, most solar panels generate 32% less energy than they do in the summer. This, however, is related to your location and light levels, not the ...

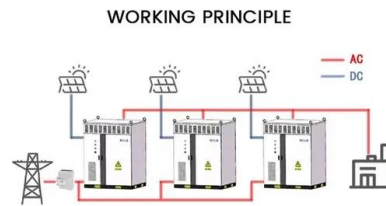
[Product Information](#)



How Many Watts Does a Coffee Maker Use and Why Does it ...

A coffee maker typically uses 550-1500 watts of power, depending on the brand, size, and mechanism. Drip coffee makers generally consume between 550 and 1200 watts, ...

Product Information



How many watts does the solar energy storage and control ...

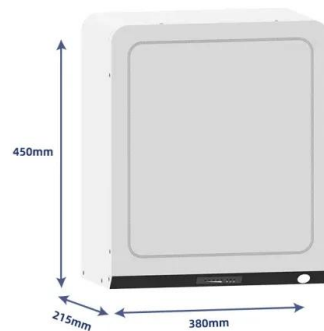
For residential use, systems may range from 1,000 watts to 5,000 watts, while larger commercial or industrial systems can exceed 10,000 watts, sometimes reaching several ...

Product Information

How many watts of solar energy are used in winter? , NenPower

Thus, solar panels can still provide significant energy outputs during winter, despite lower temperatures; however, additional care must be taken to ensure that snow cover is ...

Product Information



Do Solar Panels Work in Winter? , Better than you ...

Yes, solar panels work in winter. Solar panels work by converting sunlight into electricity, not heat. Although there are less available sunlight hours in winter ...

Product Information



[How Much Energy Does a Solar Panel Produce in Winter?](#)

In the winter, most solar panels generate 32% less energy than they do in the summer. This, however, is related to your location and light levels, not the panels.

[Product Information](#)



[How much electricity can a solar integrated machine install](#)

For example, a 5-kilowatt (kW) solar integrated machine may consist of 20 panels, each producing 250 watts under optimal conditions. This cumulative output could adequately ...

[Product Information](#)

[How Many Watts Does a CPAP Use? \(Power Consumption Test\)](#)

How Many Watts is a CPAP? The average CPAP uses between 20 - 70 watts. In addition, CPAP machines have a peak wattage of about 100 watts. This peak power surge lasts for 1 or 2 ...

[Product Information](#)



[How Many Watts Does an Average House Use \(Per Day\)](#)

Turns out, measuring its appetite in watts is like trying to explain a rollercoaster to a hamster - not quite the right tool. But fear not, curious homeowner! We're about to untangle ...

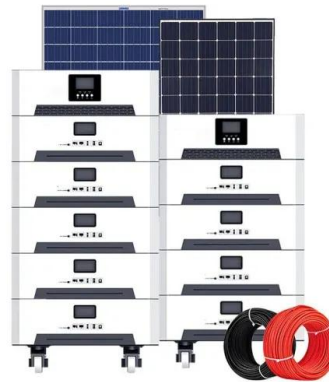
[Product Information](#)



[How Many Watts Does an Air Compressor Use? \(Compressor ...](#)

How Many Watts is a Compressor? The average air compressor uses between 1000 and 2000 watts. The exact number depends on the size and model of your air compressor. For example, ...

[Product Information](#)



Contact Us

For catalog requests, pricing, or partnerships, please visit:
<https://www.les-jardins-de-wasquehal.fr>