

# **How many watts does a 350mm solar cell have**





## Overview

---

They deliver 450 to 600 watts per panel, making them ideal for large flat roofs on factories, warehouses, or ground mounted farms. With each panel about 30 percent larger than residential modules, fewer panels are needed for high-capacity systems, to simplify wiring and mounting on projects. How much power does a 400 watt solar panel produce?

A 400 W solar panel can produce around 1.2-3 kWh or 1,200-3,000 Wh of direct current (DC). The power produced by solar panels can vary depending on the size and number of your solar panels, the efficiency of solar panels, and the climate in your area. How many solar panels are needed to run a house?

.

How many Watts Does a portable solar panel generate?

Portable solar panels are smaller, often half the size of regular solar arrays. Solar panels for homes average 250 to 400 watts. Many portable solar panels for RV are in the 100 to 300 watt range. The physical size of the panels often correlate to the watts, the bigger the panels the more watts it can generate.

How many Watts Does a 60 cell solar panel produce?

For example, 60-cell solar panels measure 99 x 167.6 cm and produce 270 to 300 watts, while 72-cell solar panels have an average output ranging between 350 and 400 watts due to the extra row of cells. Half cut cell panels appeared and these half-cell panels have been cut in half.

How much does a 400 watt solar panel cost?

The most well-known type is 400 W solar panels, which produce an energy range of 1.2-3 kWh. The higher the wattage, the better energy production efficiency your solar panels will have! These solar panels can range between 400-600 dollars, depending on size, wattage, and solar panel producers in your country.



How many Watts Does a solar panel produce per square foot?

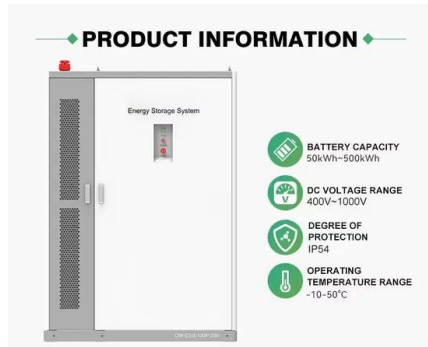
Dividing the specified wattage by the square footage of the solar panel will give us just this result: The average solar panel output per area is 17.25 watts per square foot. Let's say that you have 500 square feet of roof available for solar panel installation.

How much do solar panels weigh?

Standard solar panels weigh 35 to 60 lbs. The panels' weight is influenced by the materials used for construction. Portable solar panels weigh from 10 to 30 lbs. The 5 watt panels are the lightest at 2 to 5 lbs. These lightweight solar panels are used to charge mobile phones and other devices.



## How many watts does a 350mm solar cell have



### [Solar Panel Sizes and Wattage Explained](#)

After you've entered your selections, the tool estimates your daily solar output, system size and recommended battery size if selected. If interested, you can also take a look ...

### [Product Information](#)

### Solar Panel Size and Wattage Chart: Standard Sizes & Uses for ...

Because the size of a standard solar panel can vary, a chart that outlines the wattage capabilities of each can be crucial when asking, how many solar panels do I need?

### [Product Information](#)



### [Solar Panel Size Guide \(with 4 Charts\)](#)

Many portable solar panels for RV are in the 100 to 300 watt range. The physical size of the panels often correlate to the watts, the bigger the panels the more watts it can generate. Here ...

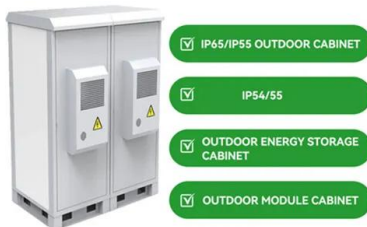
### [Product Information](#)

### [Solar Panel Watts Per Square Foot: 'We \(Finally\) Did The Math'](#)

Just from this, we have a good idea of how many watts per square foot we can expect from solar panels. As we can see from the chart (3rd column), the watts per square foot range from 15.57 ...



## [Product Information](#)



## [Solar Panel Dimensions Sizes and Wattage](#)

In terms of dimensions, a 300w monocrystalline or polycrystalline solar panel typically has a length of around 1.6 meters and a width of 1 meter. However, these dimensions ...

## [Product Information](#)

## [Standard Solar Panel Sizes And Wattages \(100W-500W ...](#)

To bridge that gap of very useful knowledge needed, we have compared and averaged the sizes of 100-watt to 500-watt solar panels available on the market. The goal here is to get to the ...



## [Product Information](#)



## [Solar Panels Sizes and Weights \(All Sizes\)](#)

The same 60-cell solar panels mentioned above weigh 0.17 to 0.15 pounds per watt, depending upon where they fall within the 270 to 300-watt range. A 72-cell solar panel ...

## [Product Information](#)



## Solar Panel Wattage Calculator

A solar panel wattage calculator can help optimize your solar power system for maximum efficiency and cost-effectiveness. This calculator considers variables such as panel efficiency, ...

[Product Information](#)



[How many watts does a solar panel 600×350 have? , NenPower](#)

The average wattage of a solar panel measuring 600×350 mm falls typically within the range of 100 to 150 watts. Variations in technology influence the output, as different types ...

[Product Information](#)

[The best solar panel size guide every homeowner needs](#)

Today, improved Mono PERC cell technology packs around 550 W into roughly the same 2.28 × 1.13 m frame. And with cutting-edge N-type TOPCon cells, leading Indian ...

[Product Information](#)



## Solar Panel Size and Wattage Chart: Standard Sizes & Uses for ...

Solar Panel Size Chart: Solar Panel Size and Wattage, Standard Size of Solar Panels for Home. How To Determine Solar Panel Size Calculator.

[Product Information](#)

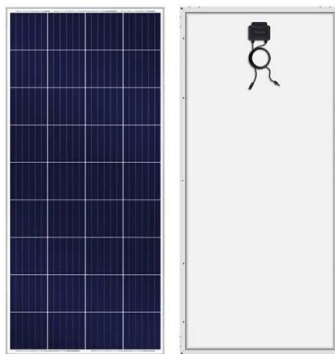




## Solar Panel Wattage Calculator

This solar panel wattage calculator allows you to calculate the recommended solar panel wattage according to the energy consumption of your household appliances. If you want ...

[Product Information](#)



## [Solar Panel Sizes And Wattage , Sizing, Dimensions & Weight](#)

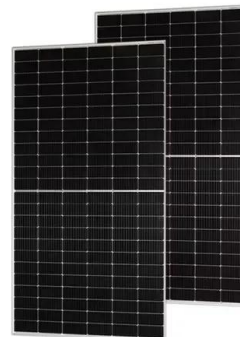
The size or dimensions of the solar panels, measured in height by width, will determine the number of solar panels that will fit on your roof and the wattage of solar panels ...

[Product Information](#)

## [Solar Panel Wattage Explained: How Many Watts Do You Need?](#)

Confused about solar panel wattage? Learn how many watts you need, how solar output works, and how to calculate the right solar setup for your home, RV, or cabin.

[Product Information](#)



## [How many watts does a solar cell generate? . NenPower](#)

1. The wattage generated by a solar cell varies based on multiple factors, and it can range from 100 watts to 370 watts or even higher for standard residential panels. 2. Factors ...

[Product Information](#)





## [How Much Electricity Does A Solar Panel Produce?](#)

Solar panels historically came in two sizes: 60-cell and 72-cell. With the current half-cut module technology in use by most manufacturers, this is typically 120 ...

[Product Information](#)



## [How Many Panels In 1kW, 3kW, 5kW, 10kW, 20kW ...](#)

Alright, figuring out how many panels you need for different sizes of solar systems is really easy. We will show you how to determine the number of panels ...

[Product Information](#)

## Contact Us

---

For catalog requests, pricing, or partnerships, please visit:  
<https://www.les-jardins-de-wasquehal.fr>