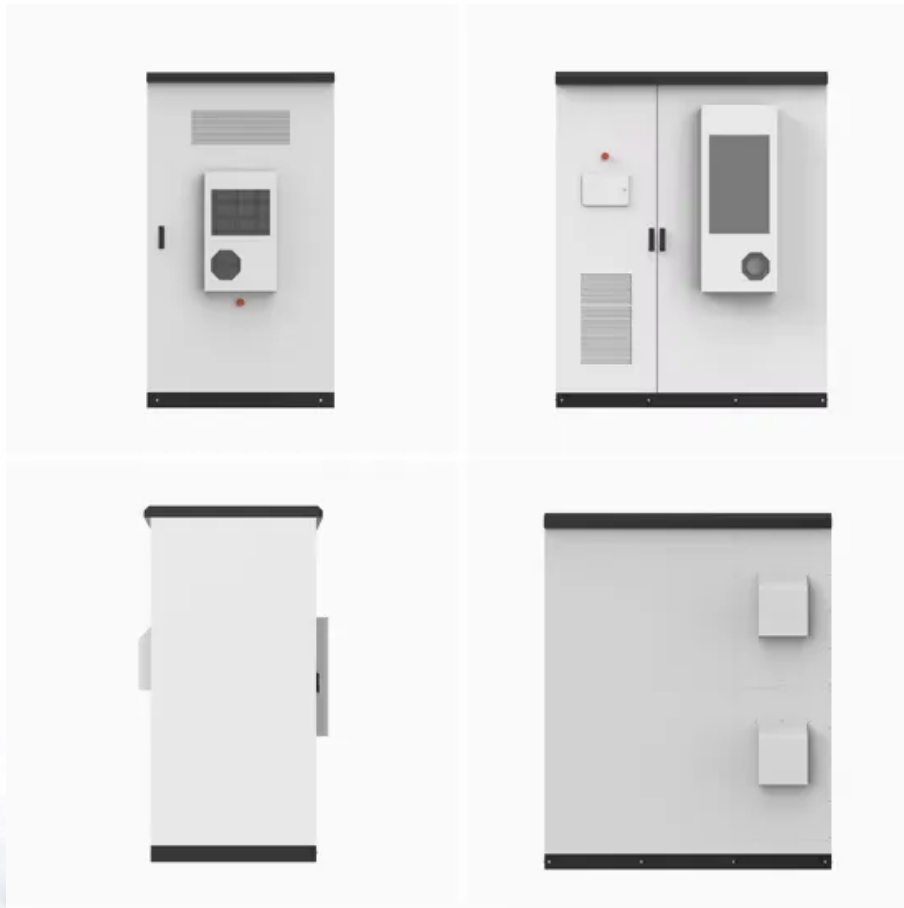


# **How many square meters does one watt of solar power generate**





## Overview

---

What is solar panel watts per square meter (W/M)?

Solar panel watts per square meter (W/m) measures the power output of a solar panel based on its size. Compare solar panels to see which generates most electricity per square meter. A higher W/m value means a solar panel produces more power from a given area. This can help you determine how many solar panels you need for your energy needs.

How do you calculate solar panel output in watts per square meter?

The formula to calculate the solar panel output and how much energy solar panels produce (in watts) using watts per square meter is as follows: Solar Panel Output (W) = Watts per Square Meter (W/m<sup>2</sup>) × Area of Solar Panel (m<sup>2</sup>).

How much power does a solar panel produce?

The power output of a solar panel depends on various factors, including its efficiency, the intensity of sunlight, and environmental conditions. On average, a standard solar panel with an area of 1 square foot can produce around 10-20 watts of power.

How many Watts Does a solar panel use?

Here, the amount of the force of the electricity is represented by volts. The aggregate amount of energy used is expressed in amps (amperes). Output ratings on most solar panels range between 250 watts to 400 watts. 1.

Number of Solar Cells The most common categorization of solar cells is in 60-cell solar panels and 72-cell solar panels.

How much solar energy is produced per square meter?

The amount of solar energy produced in Kilowatt hours per square meter (kWh/m<sup>2</sup>) depends on the solar irradiance, which is the intensity of sunlight falling on a specific area. On a clear day with high solar irradiance, a square



meter of efficient solar panels can generate around 150-250 watt-hours (Wh) of energy in an hour.

What is solar power measurement?

In the context of solar panels, it refers to the amount of electrical power a solar panel can generate per unit of surface area exposed to sunlight. This measurement for solar panels is a crucial factor in determining the solar panel efficiency and performance of solar panels.



## How many square meters does one watt of solar power generate

---



### [How Much Electricity Does 1 Square Meter \(m2\) Solar Panel ...](#)

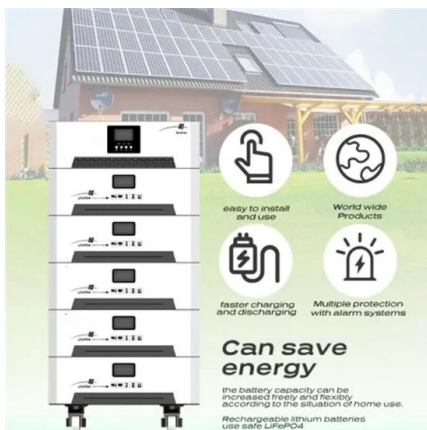
Assuming an average efficiency of 20%, which is typical for this modern solar panel with a power of 211 watts per square meter, and an average exposure to sunlight of 5 hours per day, a 1 m2 ...

### [Product Information](#)

### How much electricity does solar power generate per square meter

How much electricity does solar power generate per square meter Solar power generation per square meter can produce approximately 150 to 200 watts during peak sunlight ...

### [Product Information](#)



### How much electricity can one square meter of solar panels generate?

Therefore, approximately one square meter can generate around 150W-170W of electricity. What power factors will affect the power generation of solar panels?

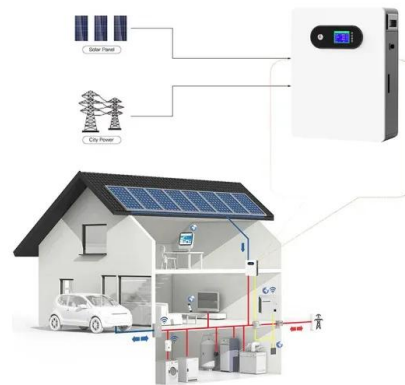
### [Product Information](#)

### [Solar Panel kWh Calculator: kWh Production Per Day, ...](#)

Solar Output = Wattage × Peak Sun Hours × 0.75 Based on this solar panel output equation, we will explain how you can calculate how many kWh per day ...



## [Product Information](#)



## [Solar Panel Output per Square Meter: Efficiency](#)

...

Solar panels have become a cornerstone of renewable energy, but many wonder: How much power can a single square meter of solar panels actually produce? ...

## [Product Information](#)



## [How many square meters of solar panels does a family need?](#)

To determine the need for solar panels to power a four-person family's home in Europe, it's important to consider the average electricity consumption of a European household. The ...

## [Product Information](#)



## **Solar Panels Watts per Square Meter**

So, when we say "watts per square meter," we are essentially measuring how much power a solar panel can produce relative to its physical size. This metric, watts per square ...

## [Product Information](#)



### [Solar Power per Square Meter Calculator](#)

Power of Panel (Watt Peak): Solar panels are marked with watt peak (Wp), and this is the amount of output the panels should produce in ideal conditions. Your solar panel will ...

### [Product Information](#)



### **How Much Electricity Does 1 Square Meter (m2) Solar Panel Generate?**

Assuming an average efficiency of 20%, which is typical for this modern solar panel with a power of 211 watts per square meter, and an average exposure to sunlight of 5 hours per day, a 1 m2 ...

### [Product Information](#)

### [Watts Per Square Meter Solar Panel - The Go-to Guide](#)

Watts per square meter ( $W/m^2$ ) is the power density of sunlight falling on a given area of solar panels. In the context of solar panels, it refers to the amount of electrical power a ...

### [Product Information](#)



### [How many watts is a square meter of solar panel? . NenPower](#)

THE EFFICIENCY OF SOLAR PANELS The efficiency of solar panels is a critical aspect that affects the total output of power generated in a square meter. Solar panel ...

### [Product Information](#)



### How many square meters of solar energy is one solar watt

In the realm of solar energy, one watt of solar power can be understood through various metrics. 1. A solar watt represents a measurement of power; 2. The energy produced ...

#### Product Information



### How many square meters is one watt of solar energy?

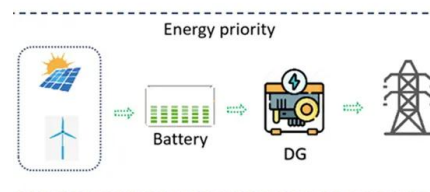
1. To convert watts to square meters in the context of solar energy, it is essential to consider the solar irradiance, typically measured in watts per square me...

#### Product Information

### How to Calculate Solar Power per Square Meter

Solar power per square meter refers to the amount of solar energy that can be harnessed by a solar panel over a specific area, typically expressed in watts per square meter ...

#### Product Information



### How many watts does a square meter of solar panel have?

1. Solar panels generate approximately 100 to 200 watts per square meter under optimal sunlight conditions, 2. Factors affecting solar panel output include angle, shading, and ...

#### Product Information





### [How many square meters is one watt of solar cell , NenPower](#)

The common dimensions for solar panels usually hover around 1.6 square meters, producing between 250 to 370 watts per panel. These specifications serve as a baseline for ...

[Product Information](#)



### [How many square meters is one watt of solar energy?](#)

Solar irradiance, defined as the power per unit area received from the sun, plays a direct role in determining how many square meters are equivalent to one watt of energy.

[Product Information](#)



### **Solar Panel Output per Square Meter: Efficiency Factors & Future ...**

Solar panels have become a cornerstone of renewable energy, but many wonder: How much power can a single square meter of solar panels actually produce? Let's break down the ...

[Product Information](#)



## **Contact Us**

---

For catalog requests, pricing, or partnerships, please visit:  
<https://www.les-jardins-de-wasquehal.fr>