

How many kw does the largest inverter have





Overview

Before we go any further, we highly recommend that you choose a pure sine wave inverter. This type of inverter delivers high-quality electricity, similar to your utility company. This way, none of your appliances run the risk of being damaged. Now, when it comes to sizing your inverter, you always need to check.

We have summarized the appliances that inverters from 300W to 3000W can run depending on their rated maximum power. Note to our readers: Use the above formula to determine.

Are solar inverters the same size?

No, solar inverters are not the same size, as the size you need will depend on the generation capacity of your solar array. There is no one-size-fits-all inverter, as the size affects the unit's efficiency and larger inverters are more expensive. The easiest way to calculate the solar inverter size you need is to check the DC rating.

Do I need an inverter size chart?

The need for an inverter size chart first became apparent when researching our DIY solar generator build. Solar generators range in size from small generators for short camping trips to large off-grid power systems for a boat or house. Consequently, inverter sizes vary greatly.

How to size a solar inverter?

The right way to size an inverter is to check the wattage. The inverter wattage must be the same or greater than your solar panel's watts. Here is a chart that shows the watts consumption of various appliances and what inverter size you will need. Note that this guide includes a 20% safety margin for the inverter watts.

How many watts a solar inverter do I Need?

A 200 watt portable unit such as the NDDI Direct Power Inverter will be sufficient for that. If you are going to run an air conditioner or a refrigerator in



your RV, a more powerful inverter and battery are required. Ready to size your solar system the smart way?

.

How much power does a 5 kW inverter use?

If your system pushes 5,000 watts, a 5,000-watt (or 5 kW) inverter is usually the move. But it's not always one-to-one. Some setups undersize the inverter a bit—say, 4.6 kW for 5 kW of panels—to save cash without losing much power. It's a balancing act between cost, performance, and when you actually use electricity.

What is the power output of an inverter?

Power output is the maximum continuous power the inverter can supply to all the loads on the system. Exceeding the power rating by having a larger load (too many appliances) than the inverter can handle will cause it to shut down. The power output of a 3 kW inverter for example is 3000 watts (3 kW).



How many kw does the largest inverter have



[Understanding Solar Inverter Sizes: What Size Do You Need?](#)

For instance, a 6.6 kW array could theoretically be paired with a 6,600-watt inverter. However, oversizing the array is a common practice for maximum efficiency, and a ...

[Product Information](#)

[How Many Solar Panels Can I Connect to My Inverter?](#)

With a 5kw inverter, you can have up to 6.5 kw of solar power. How to Calculate Inverter Solar Panel Capacity There are many ways to calculate inverter sizes, but we will stick to the ...



[Product Information](#)

[What Size Solar Inverter Do I Need? Experts Break It Down](#)

Here's the cheat code: your inverter size should match your solar panel output. If your system pushes 5,000 watts, a 5,000-watt (or 5 kW) inverter is usually the move.

[Product Information](#)



Solar Inverter Size Chart

Inverter Size (Greater Than 100W) Again, the power consumption given here is for general estimates only. TVs, laptops, microwaves etc. come in various shapes and sizes. To get more ...

[Product Information](#)



[Can a 5kW Inverter Really Power Your Entire House?](#)

For example, if you have a 6kWp solar system, you may need a 6 kW inverter or two 3 kW inverters to match the power output of your solar system. Otherwise, you may waste ...

[Product Information](#)



[16,000 Watt Portable Dual Fuel Inverter Generator](#)

DuroMax XP16000iH is the largest portable dual fuel Inverter Generator available on the market. Boasting a 16,000 watt maximum output this Generator provides clean and reliable power for ...

[Product Information](#)



[Largest Solar Inverter Sizes: Boosting Efficiency](#)

Historically, solar inverters started small enough to be mounted in a residential house, typically between 1 kW and 10 kW. But with the growth of large commercial projects ...

[Product Information](#)





[Inverter Size Chat: What Size Inverter Do I Need?](#)

To find out your size, you just need to add together the total wattage of the appliances you wish to run. For example, TV (60W), coffee maker (700W), lamp (60W), phone (5W). So add together ...

[Product Information](#)



[How do you determine what size of inverter you will need to](#)

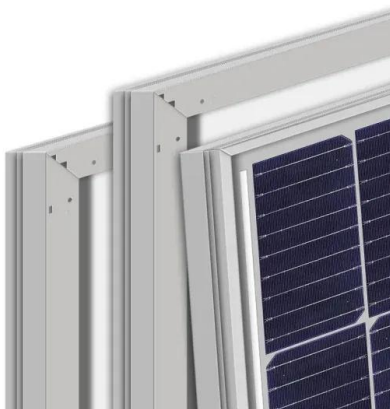
So, with that analogy, kwh is your gas tank size (how big your battery is) and your inverter is the size of your engine (it will give you a certain number of watts to use from your ...

[Product Information](#)

[How To Size A Solar Inverter in 3 Easy Steps](#)

Your solar inverter should have a similar or slightly higher wattage rating than the DC output of your solar panels (which in this case is 4.5 kW). You can size it ...

[Product Information](#)



SolarEdge Single Phase Inverters

A higher current source may be used; the inverter will limit its input current to the values stated. Revenue grade inverter P/N: SExxxxA-US000NR2 (for 7600W inverter:SE7600A ...

[Product Information](#)



3KW, 6KW, 8KW, and Beyond: Choosing the Right Hybrid Inverter

Choose the perfect hybrid inverter--3KW, 6KW, 8KW, or higher--for your energy needs. Compare features, efficiency, and scalability in this guide.

[Product Information](#)



[How do you determine what size of inverter you will need to](#)

So, with that analogy, kwh is your gas tank size (how big your battery is) and your inverter is the size of your engine (it will give you a certain number of watts to use from your battery) So a ...

[Product Information](#)

[How To Size A Solar Inverter in 3 Easy Steps](#)

Your solar inverter should have a similar or slightly higher wattage rating than the DC output of your solar panels (which in this case is 4.5 kW). You can size it between 1.15 and 1.5 times ...

[Product Information](#)



Contact Us

For catalog requests, pricing, or partnerships, please visit:
<https://www.les-jardins-de-wasquehal.fr>