

How many inverters are needed for solar panels





Overview

There are three types of inverters available: the string inverter, the power optimizer, and the micro-inverter. You would only need one inverter when using string or power optimizers, but using micro-inverters doesn't require a standalone one.

You would need to purchase an inverter that matches the output of your solar array, so if you have a 6000W (6kW) system, your inverter would need to be rated at 6000W. You.

You can connect inverters in parallel to double the wattage (power) or in series to increase the voltage. You could do this if you have several smaller inverters that you want to connect.

Do I need a solar inverter?

For most home and portable PV systems, you will only need one inverter if you are using either a string inverter or power optimizers for the solar array; if you use micro-inverters, you won't require a standalone inverter as they convert DC to AC at the panel.

Can a solar system have multiple inverters?

A: Yes, using multiple inverters is a common approach for larger solar panel systems. In this setup, the system can be designed with several inverters, allowing you to connect more panels overall. Each inverter can manage a specific number of panels, and this can enhance system performance and efficiency.

How many solar panels can an inverter handle?

To effectively determine the number of solar panels an inverter can handle, you must first assess the size of your solar panel array. The overall capacity of your solar installation is defined by the wattage and number of panels. You can expect that the inverter should match or slightly exceed the combined wattage produced by the solar panels.

How many solar panels can a 5 kW inverter use?



You will also need to consider the wattage of the solar panels you plan to use. For example, if you have a 5 kW inverter and each of your solar panels is rated at 300 watts, you can calculate the maximum number of panels by dividing the inverter's capacity by the panel wattage: $5,000 \text{ watts (inverter)} / 300 \text{ watts (panel)} = \text{approximately } 16.67$.

What factors affect a solar inverter?

Panel Wattage: Consider the wattage of the solar panels; for example, a 300W panel will affect how many can be connected to an inverter with a specific capacity. **System Design:** Proper system design is crucial; factors such as panel orientation and shading will also impact overall performance and inverter load.

Are there different types of solar inverters?

A: Yes, there are different types of inverters, and they do affect the number of solar panels you can connect. The most common types are string inverters, microinverters, and power optimizers. String inverters have a set limit on the number of panels they can support due to their centralized nature.



How many inverters are needed for solar panels



[Inverter Size Calculator - self2solar](#)

Optimize your solar system by calculating the ideal inverter size. Simply input panel specs for a recommended inverter power range that ensures efficiency and safety today!

[Product Information](#)

[How Many Inverters Do I Need For Solar Panels?](#)

A typical solar panel system requires only one inverter, although larger systems may require multiple inverters. Multiple inverters can cause redundancies and improve system ...

[Product Information](#)



[How Many Inverters Do I Need? \(Find Out Right Now!\)](#)

There are three main types of inverters commonly used in solar arrays: string inverters, power optimizers, and micro-inverters. Each type has its own unique features and ...

[Product Information](#)

[Solar Load Calculator , How-many-solar-panels-do-i-need](#)

Calculate how many solar panels you need based on your daily power usage. Instantly size your inverter, battery bank, and wiring with this free solar calculator.



[Product Information](#)



How Many Inverters Per Solar Panel: Understanding the Optimal

For most home solar systems, one micro-inverter per panel is ideal, as this allows for maximum efficiency and optimization of energy production. This setup enables each panel to operate ...

[Product Information](#)



[How Many Solar Panels Can I Connect to My Inverter?](#)

Adding solar panels is an obvious solution, but how many of these PV modules can your inverter handle? A solar array can be up to 130% of the inverter capacity. So if you have a 4000 watt ...



[Product Information](#)



[What Size Inverter You Need \(Calculations + Battery\)](#)

The size of the inverter required will be determined by the total wattage of the appliances you need to operate and the time they need to run. You also need to add a bit ...

[Product Information](#)



How Many Inverters Do I Need for Solar Panels? Find Out Fast

How many inverters do I need for solar panels? Typically, you only need one inverter for your solar panel system, but for larger setups, you may need multiple inverters or ...

[Product Information](#)



[How Many Inverters Do I Need? \(What You Need\)](#)

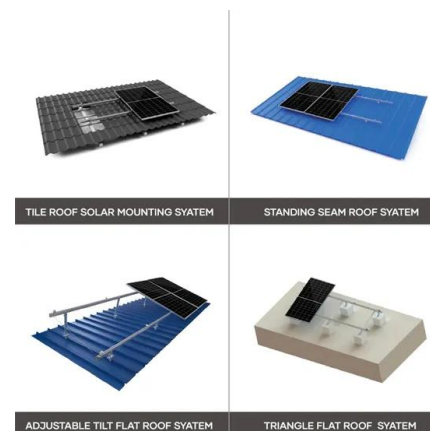
For most home and portable PV systems, you will only need one inverter if you are using either a string inverter or power optimizers for the solar array; if you use micro-inverters, ...

[Product Information](#)

How to Calculate Solar Panel and Battery Size for Your Energy ...

Unlock the secrets to effectively calculating solar panel and battery sizes with our comprehensive guide. This article demystifies the technical aspects, offering step-by-step ...

[Product Information](#)



[How Many Inverters Per Solar Panel: Understanding ...](#)

For most home solar systems, one micro-inverter per panel is ideal, as this allows for maximum efficiency and optimization of energy production. This setup ...

[Product Information](#)





[How Many Inverters Do I Need for Solar Panels? A](#)

...

The number of inverters required depends on various factors, including the total wattage of your solar panels and your energy consumption patterns. Typically, larger solar ...

[Product Information](#)



[What Size Inverter Needed for Solar Panels?](#)

There are a few things to consider when selecting an inverter for your solar panel system. The size of the inverter will be determined by the watts of your solar panels. A general ...

[Product Information](#)



[How Many Solar Panels Can I Connect to an Inverter?](#)

In this guide, we will explore several factors that determine how many solar panels can be connected to an inverter: Inverter Specifications: Understanding ...

[Product Information](#)



[How many solar panels can an inverter handle](#)

A: To determine how many solar panels your inverter can handle, you need to check the inverter's power rating, typically measured in kilowatts (kW). You will also need to ...

[Product Information](#)



Contact Us

For catalog requests, pricing, or partnerships, please visit:
<https://www.les-jardins-de-wasquehal.fr>