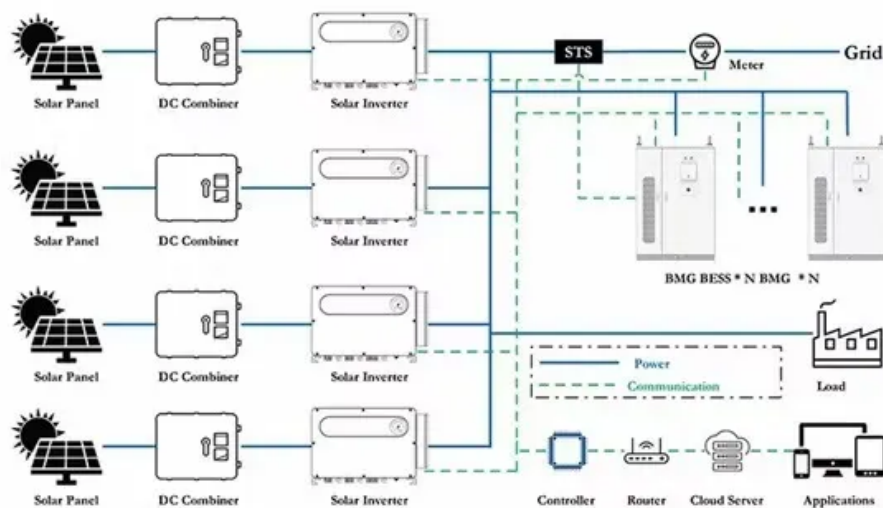


How big is a 55 watt solar panel





Overview

Standard residential solar panels measure 66 inches by 40 inches, or a little over 5 feet long and 3 feet wide. Each panel therefore takes up around 18 square feet. Commercial panels tend to be a bit bigger than residential panels, averaging about 6.5 feet long.



How big is a 55 watt solar panel



[Solar Panel Sizes, Dimensions & Weight . Solar Choice](#)

Standard residential solar panels contain 60 solar cells (or 120 half-cut solar cells) and typically generate anywhere from 350W to 500W of electricity. The size of these panels ...

[Product Information](#)

[Solar Panel Sizes And Wattage . Sizing. Dimensions & Weight](#)

The size or dimensions of the solar panels, measured in height by width, will determine the number of solar panels that will fit on your roof and the wattage of solar panels ...

[Product Information](#)



[Solar Panel Size & Weight Guide \[+ Charts\] - Solartap](#)

Standard residential solar panels measure 66 inches by 40 inches, or a little over 5 feet long and 3 feet wide. Each panel therefore takes up around 18 square feet. Commercial ...

[Product Information](#)



[Solar Panel Sizes and Wattage Explained](#)

After you've entered your selections, the tool estimates your daily solar output, system size and recommended battery size if selected. If interested, you can also take a look ...

[Product Information](#)



[The best solar panel size guide every homeowner needs](#)

Today, improved Mono PERC cell technology packs around 550 W into roughly the same 2.28 × 1.13 m frame. And with cutting-edge N-type TOPCon cells, leading Indian ...

[Product Information](#)

[Standard Solar Panel Sizes And Wattages \(100W-500W ...](#)

To bridge that gap of very useful knowledge needed, we have compared and averaged the sizes of 100-watt to 500-watt solar panels available on the market. The goal here is to get to the ...

[Product Information](#)



[Solar Panel Dimensions\(Size\): 300W,400W,1 Kw,How Big It Is?](#)

The size of a solar panel largely depends on the wattage rating. For example, a 300W solar panel typically measures about 1.6m x 1m, a 400W solar panel typically measures about 1.7m x ...

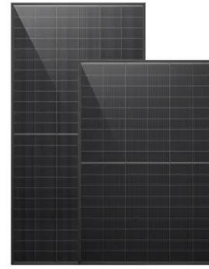
[Product Information](#)



[How Big Is A 400 Watt Solar Panel? \[Updated: September 2025\]](#)

A 400 watt solar panel typically has dimensions of 79" x 39" x 1.4". This makes it a good option for solar installations with space constraints. The 400 watt solar panel size and ...

[Product Information](#)



Understanding Solar Panel Dimensions In 2025: A Complete Size ...

Explore the most common solar panel dimensions in 2025, including residential and commercial sizes. Learn how solar panel size dimensions affect power, installation, and ...

[Product Information](#)



Understanding Solar Panel Sizes and Wattage: A Complete Tutorial

Typically, these units range from 60 to 72 cells. For example, a standard 60-cell module measures about 65 inches by 39 inches, while a larger 72-cell unit is approximately 77 ...

[Product Information](#)



[Solar Panel Size Chart - SizeChartly](#)

Answer: For residential use, the best solar panel size generally falls around 65 x 39 inches. These dimensions are designed to fit typical roof spaces while providing a good balance of efficiency ...

[Product Information](#)





What Size Solar Panel Do I Need to Run a 12V Fridge?(with ...

Learn the right solar panel size to power your 12V fridge for outdoor adventures. Get tips on efficiency, components, and calculations for an uninterrupted chill with BougeRV's energy ...

[Product Information](#)



[How Big Is A 1Kw Solar Panel? \[Updated: September 2025\]](#)

A 1kW solar panel typically requires up to 100 square feet of space and produces an estimated 150 watts of power. The standard dimensions for a residential solar panel are 66×40 ...

[Product Information](#)

Contact Us

For catalog requests, pricing, or partnerships, please visit:
<https://www.les-jardins-de-wasquehal.fr>