

How big a battery does the inverter need





Overview

To recharge your battery from time to time you would need the right size solar panel to do the job! Read the below article to find out the suitable solar panel size for your battery bank .

Note!The battery size will be based on running your inverter at its full capacity
Assumptions 1. Modified sine wave inverter efficiency: 85% 2. Pure sine wave inverter efficiency:90% 3. Lithium Battery:100% Depth of discharge limit 4. lead-acid.

To calculate the battery capacity for your inverter use this formula Inverter capacity (W)*Runtime (hrs)/solar system voltage = Battery Size*1.15 Multiply the result by 2 for lead-acid type.

You would need around 24v150Ah Lithium or 24v 300Ah Lead-acid Batteryto run a 3000-watt inverter for 1 hour at its full capacity .

Here's a battery size chart for any size inverter with 1 hour of load runtime
Note! The input voltage of the inverter should match the battery voltage. (For example 12v battery for 12v.

What is the recommended battery size for an inverter?

Interpreting Results: Once you input the required data, the calculator will generate the recommended battery size in ampere-hours (Ah). For instance, if your power consumption is 500 watts, the usage time is 4 hours, and the inverter efficiency is 90%, the calculator might suggest a battery size of approximately 222 Ah.

What is the calculate battery size for inverter calculator?

The Calculate Battery Size for Inverter Calculator helps you determine the optimal battery capacity needed to support your inverter system. By inputting critical parameters such as power consumption, inverter efficiency, and desired usage time, this calculator provides a precise battery size recommendation tailored to your specific needs.

What voltage should a 12V inverter run on?



The input voltage of the inverter should match the battery voltage. (For example 12v battery for 12v inverter, 24v battery for 24v inverter and 48v battery for 48v inverter Summary What Will An Inverter Run & For How Long?

.

How many batteries to run a 1000W inverter?

Now we need to divide the available energy with the used energy:
 $864\text{Wh}/50\text{W} = 17$ hours or run time. If you increase the battery capacity you can run the fridge for longer. Conclusion You need one 12V 100Ah battery or four 12V 100Ah lead-acid batteries in parallel to run a 1,000W inverter.

How many batteries do I need for a 12V inverter?

Ensure the configuration matches your inverter system's specifications.
Example: If you need 658 Ah at 12V and choose 12V, 200 Ah batteries, you would need: $658\text{ Ah} / 200\text{ Ah per battery} \approx 3.29$ batteries Round up to 4 batteries, but keep in mind that over-sizing can be more efficient in some cases.

How much battery should a 500 watt inverter use?

For instance, if your power consumption is 500 watts, the usage time is 4 hours, and the inverter efficiency is 90%, the calculator might suggest a battery size of approximately 222 Ah. Practical Tips: Ensure all input values are accurate to avoid skewed results.



How big a battery does the inverter need



[How Much Battery Capacity Do You Need With a 12V Inverter?](#)

Discover how to calculate the ideal battery capacity for a 12V inverter using simple math, practical examples, and money-saving tips for daily power.

[Product Information](#)

[How Many Batteries For A 1000 Watt Inverter?? + Diagrams](#)

To maximize the lead-acid battery life, we need four 12V 100Ah batteries. This is how: 12V 100Ah battery * 4 in parallel = 12V 400Ah battery. $400Ah * 0.2C = 80A$ of current ...

[Product Information](#)



[How to Calculate Solar Panel, Battery, and Inverter Size](#)

Calculate How Much Power You Will Need Before sizing your solar panel system components, it's essential to understand your energy needs. This will help you determine the appropriate ...

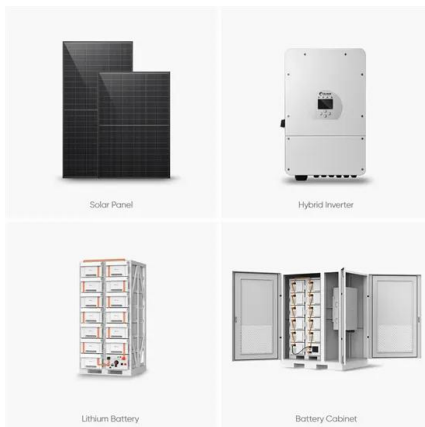
[Product Information](#)

How to Calculate the Right Battery Size for Your Inverter System

To help you find the perfect match, here's a step-by-step guide to calculate battery size based on your power needs and inverter specifications.
Step 1: Determine Your Power Requirements



[Product Information](#)



Calculator

Are you tired of struggling with complex calculations for inverter size, battery capacity, and battery backup time? Look no further! Our powerful calculators are here to make your life easier. With ...

[Product Information](#)



[What Size Battery Do I Need for a 1000W Inverter?](#)

That's why I've created this super-easy guide to help you find the right size battery for your 1000 watt inverter. In this article, we will go through battery size and how long they will last, the best ...

[Product Information](#)



[How to Calculate the Right Battery Size for Your ...](#)

To help you find the perfect match, here's a step-by-step guide to calculate battery size based on your power needs and inverter specifications. Step 1: ...

[Product Information](#)



[What Size Battery Do I Need for a 1000W Inverter?](#)

That's why I've created this super-easy guide to help you find the right size battery for your 1000 watt inverter. In this article, we will go through battery ...

[Product Information](#)



[Solar Inverter & Battery Sizing Calculator](#)

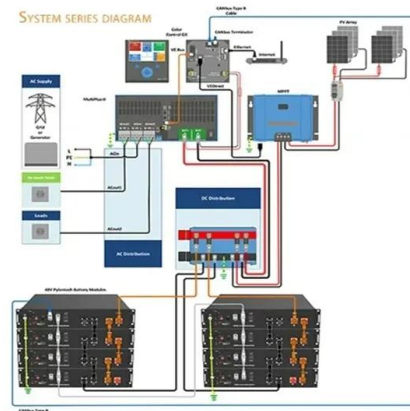
Choosing the correct inverter and battery size is crucial for every microgrid system. Our Solar Inverter and Battery Sizing Calculator provides a simple and user-friendly solution.

[Product Information](#)

[Can an Inverter Be Too Big for Your Battery System?](#)

Match the inverter's continuous wattage rating to the battery's discharge capacity. For a 12V 200Ah battery (2.4kWh), a 2000W inverter is ideal. Formula: Inverter Wattage \leq (Battery ...

[Product Information](#)



[How to Calculate Battery Size for Inverters of Any Size](#)

In order to size a battery bank, we take the hours needed to continuously run your inverter and multiply them by the number of watts the inverter is designed for. This equals the total watt ...

[Product Information](#)



Calculate Battery Size For Any Size Inverter (Using Our Calculator)

To recharge your battery from time to time you would need the right size solar panel to do the job! Read the below article to find out the suitable solar panel size for your battery bank

[Product Information](#)



[Calculate Battery Size for Inverter Calculator](#)

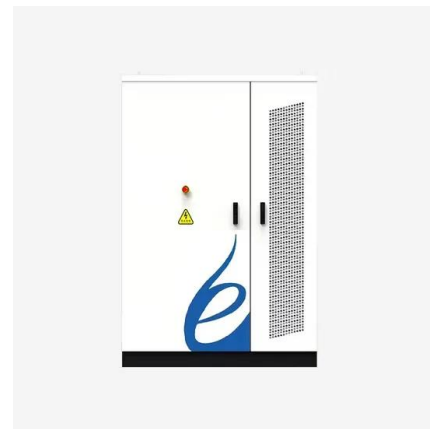
Estimate the battery capacity required for your inverter based on power load, runtime, and efficiency. Using the Calculate Battery Size for Inverter Calculator can ...

[Product Information](#)

need advice on how big of an inverter I need to run a 110V AC ...

In particular you need to know how many amps it draws. Once you know that figuring out inverter size is easy, $110\text{Volts} * \text{Amps} = \text{Watts}$. You would need an inverter that can produce ...

[Product Information](#)



[How to Calculate Solar Panel, Battery, and Inverter Size](#)

Calculate How Much Power You Will Need Before sizing your solar panel system components, it's essential to understand your energy needs. This will help you ...

[Product Information](#)





[Understanding Battery Capacity and Inverter Compatibility](#)

To estimate the backup time of a 200 Ah battery powering a 100W appliance, follow these steps: If powering two 100W devices, the total power requirement is 200W: Run ...

[Product Information](#)



[How Do I Match My Battery Size to My Inverter?](#)

How do I know what size battery I need for my inverter? A1: Calculate the total wattage of devices you'll run, then use a guideline of at least 100Ah per 1000 watts of inverter capacity.

[Product Information](#)

[How Many Batteries Do I Need for a 5000W Inverter](#)

To power a 5000W inverter, you have to consider more than just the number of batteries. The battery capacity, the inverter voltage input and how long you need to use the inverter are ...

[Product Information](#)



[How Big of An Inverter Do I Need to Run a Crock Pot?](#)

How many you need depends on the battery size and how fast you want it charged. Suppose you fully discharged a 12V 200ah battery after cooking for 8 hours. 200 amps is 2400 watts, so 2 x ...

[Product Information](#)



Contact Us

For catalog requests, pricing, or partnerships, please visit:
<https://www.les-jardins-de-wasquehal.fr>