

# **Does the flow battery in a communication base station have lightning protection**





## Overview

---

How should a lightning protection System (RBS) be formed?

The earthing network of an RBS should be formed by a ring loop surrounding the tower, equipment room and fence, at a minimum. The mean radius  $r_e$  of this ring loop should be not less than  $l_1$ , as indicated in Figure 1 and this value depends on the lightning protection system (LPS) class and on the soil resistivity.

Do I need a lightning arrestor?

You need to install lightning protection to your antenna system. This will (hopefully) channel that energy to “ground”. It will (hopefully) protect your radio and your home. Better stated, it will help minimize the damage. You want a lightning arrestor for protection. There are many brands and types that can get the job done.

Where can I find information about lightning protection?

For lightning protection best resources are Polyphasers book the ARRL Handbook along with the book “Grounding and Bonding for the Radio Amateur”. The ARRL Handbook contains good electrical safety information for the amateur radio operator. Links on the next few pages to references and info. Links are also available at:

What happens if lightning strikes a radio?

Lightning seeks the best path to ground. The path of least resistance to ground. If lightning strikes your antenna, the path might go down the feed line and to your radio. The radio will be destroyed. It could even start a fire. Or cause injury. Lightning protection is important.

Is a telecommunication tower impacted by lightning?

If the antenna is installed on the top of telecommunication tower, e.g., antenna positions 1 of Figure 29, it is considered to be impacted by or



exposed to direct lightning strikes. Refer to [IEC 62305-3] for detail information about the protection angles and volume protected by an air termination system.

Does antenna lightning protection really work?

Antenna lightning protection can get pretty involved, and for good reason! There are more ways to help mitigate this problem, especially if you have a tower, multiple antennas, etc. But this simple easy-to-install lightning arrestor (or any similar device) is an inexpensive yet effective way to help protect your radios.



## Does the flow battery in a communication base station have lightning

---



### [Communication Network GSM-Base Stations and ...](#)

The protection of GSM and base station towers from lightning and overvoltage is provided by integrating external lightning systems, internal lightning systems, ...

### [Product Information](#)

### **Communication Network GSM-Base Stations and Lightning Effect**

The protection of GSM and base station towers from lightning and overvoltage is provided by integrating external lightning systems, internal lightning systems, earthing, equipotential ...

### [Product Information](#)



### **Communication Base Station (Independent Station) Lightning ...**

The lightning protection effect is far from satisfactory. This is a long-standing problem for the construction and maintenance departments of communication operators.

### [Product Information](#)



### **Keeping Substations Shielded: Maintaining Proper Protection from Lightning**

Electrical substations utilize direct lightning stroke shielding to help ensure proper operation, and to prevent costly damages and extended outages. While modern substation ...



## [Product Information](#)



## [The Design of an External Lightning Protection System](#)

An effective lightning protection system is mainly composed of two forms (i.e., internal and external) of protection systems, depending on their functionality. ...

## [Product Information](#)



## Lightning and surge protection

1 INTRODUCTION Rarely does the power of nature strike an observer more forcibly than the sight for the first time of a tropical thunderstorm in full flow. Most people, even those not frightened ...

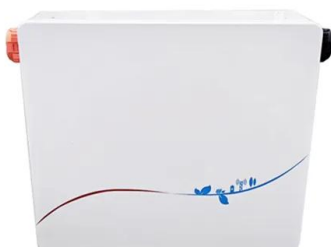
## [Product Information](#)



## [IEEE Std 1692 -2011 IEEE Guide for the Protection of ...](#)

The document addresses methods and practices necessary to reduce the risk of damages to communications equipment within structures arising from lightning surges causing GPR ...

## [Product Information](#)





## Wireless and Telecommunication , DEHN

Is your telecommunication infrastructure and network coverage at risk? If your towers and cell sites don't have lightning protection, grounding systems, surge protection devices, and other ...

### Product Information



### Lightning protection, earthing and surge protection of base

An effective lightning protection design for a telecommunication facility requires an integrated approach to a number of key factors: Protection against direct

### Product Information

## Tank Battery Lighting Protection Solutions

How does Lightning Master Protect Tank batteries? All existing facilities depending on their location and the presence of lightning, are recommended to be retrofitted with a ...

### Product Information



### ITU-T Rec. K.112 (07/2019) Lightning protection, earthing ...

The purpose of this Recommendation is to give detailed guidance on protection procedures, so that an engineer who is not a lightning protection expert can accomplish the design of the ...

### Product Information



## Lightning introduction pathways and protection measures for

Lightning is very destructive. Once a communication base station is struck by lightning, it is easy to cause damage to communication equipment and interrupt communication signals, which will ...

### Product Information



## Basics of Lightning Protection for Communication Towers

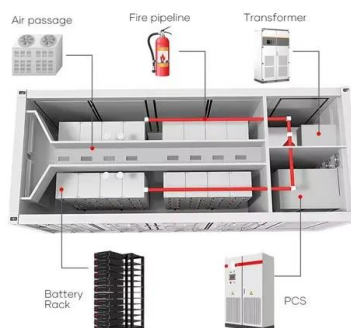
For lightning protection best resources are Polyphasers book the ARRL Handbook along with the book "Grounding and Bonding for the Radio Amateur". The ARRL Handbook contains good ...

### Product Information

## **Optimizing the power supply design for communication base stations**

The lightning protection grounding system is a key measure to protect base station equipment from lightning strikes and other electromagnetic interference. It includes ...

### Product Information



## Facility Lightning Protection - Structures vs. Systems

A structural LPS does not attract lightning, and a lightning strike in a location does not depend on whether protection has been installed. Instead, ...

### Product Information

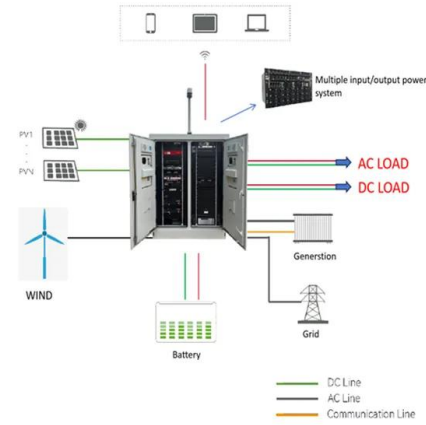




## Communication Base Station (Independent Station) Lightning Protection

The lightning protection effect is far from satisfactory. This is a long-standing problem for the construction and maintenance departments of communication operators.

[Product Information](#)



## Common Bonding of Grounded Systems

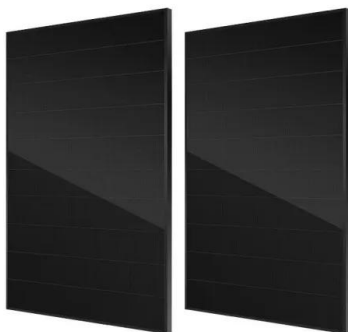
Grounded media and buried metallic conductors shall be bonded to the lightning protection grounding system below a height 12 ft. (3.6 m) vertically above the base of the structure. ...

[Product Information](#)

## Maintenance of communication base station power supply system

At present, most of the main equipment in mobile base stations (hereinafter referred to as base stations) in the communication industry rely on DC uninterruptible power supply systems to ...

[Product Information](#)



## How Base Station to Be Protected From Lightning

The mobile communication base station prefers the ring type equipotential connection, and it is recommended to use the ring type equipotential connection in accordance ...

[Product Information](#)





### THREE ESSENTIALS OF LIGHTNING PROTECTION:

...

Abstract: Bonding, Grounding and Surge Protection are integral parts of a topologically shielded lightning protection system for reasons of codes compliance, good engineering practices and ...

[Product Information](#)



### [Lightning Protection For HF/UHF/VHF Antennas](#)

There are more ways to help mitigate this problem, especially if you have a tower, multiple antennas, etc. But this simple easy-to-install lightning arrester (or any similar device) ...

[Product Information](#)

## Contact Us

---

For catalog requests, pricing, or partnerships, please visit:  
<https://www.les-jardins-de-wasquehal.fr>