

Does the base station power supply have a constant current output





Overview

In Constant Current (CC) mode, the power supply will attempt to maintain a steady current output, regardless of changes in the DUT's resistance (within certain limits). How does a power supply provide a constant current?

As you can see the power supply will try to provide a constant current by reducing the output voltage. Characteristics of Constant Current Source: Fixed Output Current: The current supplied by a CC source remains constant. Varying Voltage: The voltage adjusts based on the resistance or impedance of the load.

What are the characteristics of a constant voltage source?

As you can see the output voltage remains constant, even with increasing current. Characteristics of Constant Voltage Source: Fixed Output Voltage: The primary feature of a CV source is its ability to supply a consistent voltage output regardless of the load current. Varying Current: The output current changes depending on the load.

How does a CC control a power supply?

As we mentioned, the CC monitors the output current and keeps it at a constant level. When the load current changes, the CC adjusts the duty cycle to maintain a constant current. It also regulates the current needed to maintain the voltage at a certain level. If the voltage exceeds the set value, CC will turn off the power supply to prevent damage.

Is current constant if you put a resistor on a power supply?

It, also, is not constant as you can see if you put a high resistance across the output. If you put a 1 megohm resistor on the output terminals the actual current will drop below the current setting. On such a power supply you can plot voltage and current as two axes on a graph.

Will a power supply deliver a set voltage?



The power supply will attempt to deliver the set voltage, as long as the current drawn by the DUT does not exceed a predefined current limit. If the resistance of the DUT results in a current that is lower than the current limit, the power supply will simply deliver the set voltage.

How is voltage regulated in a power supply?

The voltage is regulated to a constant value, and the current varies as a function of the load. If the load current is high and the load attempts to draw current above the set current limit, the power supply will by default limit the current to the set value and operate in CC mode. The current is regulated and the voltage is determined by the load.



Does the base station power supply have a constant current output



[Understanding Constant Current and Constant Voltage Sources](#)

A constant voltage source provides a steady output voltage regardless of the load current, making it ideal for digital electronics, USB chargers, and general power supplies.

[Product Information](#)

Welding exam Flashcards , Quizlet

True A welder can make small changes in the welding current on a constant current power supply by varying the arc length True The purpose of a transformer id to transform high-voltage, low ...

[Product Information](#)



[Grounding DC Power Supplies , Support of ACE AUTOMATION ...](#)

Computer power supplies (including PLC power supply units, or PSUs) usually output 5V and +/- 12V, all at a constant, direct current polarity. When examining the output wires, they only ...

[Product Information](#)

[How do constant current power supplies work?](#)

The simplest constant current supply is a large value resistor in series with a much smaller load resistance. Suppose we have a 12V supply to a 1k resistor in series with a 10R resistor: the ...

[Product Information](#)



Constant Current Power Supplies

A constant current power supply can be represented as a four terminal active device. The input represents a DC voltage source for basic current regulators, and it represents AC line voltage ...

[Product Information](#)



[What is CC and CV in Power Supplies?](#)

The output of a DC power supply can be either constant voltage (CV) or constant current (CC). CV mode means that the output voltage will be constant, regardless of the load.

[Product Information](#)

DETAILS AND PACKAGING



1 USER MANUAL PDF 2 RJ45 Cable For RS485/CAN 3 Battery in Parallel Cables
4 RJ45 TO USB Monitor Cable 5 M8 Terminal*4

[Constant Voltage, Constant Current, and Constant ...](#)

In order to limit the output power, and therefore input power, a third operating mode is introduced: Constant Power (CP). While operating in Constant Power ...

[Product Information](#)





[Understanding constant voltage & current . Rohde & Schwarz](#)

Constant current mode keeps the output current below a maximum value by reducing the output voltage. In many cases, the power supply will produce some type of visual indication when it ...

[Product Information](#)



[Constant Voltage, Constant Current, and Constant Power](#)

In order to limit the output power, and therefore input power, a third operating mode is introduced: Constant Power (CP). While operating in Constant Power mode, the voltage is controlled such ...

[Product Information](#)

Choosing power supply, how to get the voltage and current ratings?

332 Power supplies are available in a wide range of voltage and current ratings. If I have a device that has specific voltage and current ratings, how do those relate to the power ratings I need to ...

[Product Information](#)



[Benefits of Constant Voltage, Constant Current, and ...](#)

DC power supplies are indispensable in modern electronics, offering stable direct current to devices that require precision and safety. The ability to operate in ...

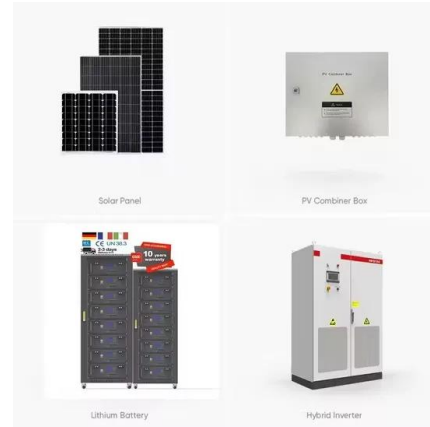
[Product Information](#)



What is a Constant Current Power Supply and where is it used for

Most PSUs have an output capacitor - in constant current mode, with no load, this will charge up to the voltage knob setting and then when you connect the LED it will discharge ...

[Product Information](#)



[POWER SUPPLY BASICS - Wavelength Electronics](#)

Unregulated Power Supply Theory Because unregulated power supplies do not have voltage regulators built into them, they typically are designed to produce a specific voltage at a specific ...

[Product Information](#)

[Benchtop Power Supply Basics You Need to Know](#)

A benchtop power supply provides adjustable and reliable DC power to your electronics projects. Unlike standard AC adapters and battery packs, a benchtop power supply ...

[Product Information](#)



B& K Precision Corporation

Here's an important point to understand: while the power supply in CC mode acts to maintain constant current, it does not become a true current source. Instead, it regulates the ...

[Product Information](#)



Contact Us

For catalog requests, pricing, or partnerships, please visit:
<https://www.les-jardins-de-wasquehal.fr>