

# **Does flywheel energy storage mean the flywheel keeps spinning**





## Overview

---

Flywheel energy storage (FES) works by accelerating a rotor (flywheel) to a very high speed and maintaining the energy in the system as rotational energy. When energy is extracted from the system, the flywheel's rotational speed is reduced as a consequence of the principle of conservation of energy; adding.

A typical system consists of a flywheel supported by connected to a . The flywheel and.

TransportationAutomotiveIn the 1950s, flywheel-powered buses, known as .

- • • - Form of power supply• - High-capacity electrochemical capacitor .
- Beacon Power Applies for DOE Grants to Fund up to 50% of Two 20 MW Energy Storage Plants, Sep. 1, 2009• Sheahen.

GeneralCompared with other ways to store electricity, FES systems have long lifetimes (lasting.

Flywheels are not as adversely affected by temperature changes, can operate at a much wider temperature range, and are not subject to many of the common failures of chemical . They are also less potentially damaging to the environment.

• • •

Why does a flywheel keep spinning?

Thus the energy is stored and it can be retrieved at a later point of time. The flywheel keeps spinning at a particular speed as long as energy is not retrieved from it. The speed at which the flywheel rotates is reduced when energy is retrieved from it. The flywheel stops spinning once all the energy is drained from the system.

How does Flywheel energy storage work?

Flywheel energy storage (FES) works by accelerating a rotor (flywheel) to a



very high speed and maintaining the energy in the system as rotational energy.

What is the difference between a flywheel and a battery storage system?

Flywheel Systems are more suited for applications that require rapid energy bursts, such as power grid stabilization, frequency regulation, and backup power for critical infrastructure. Battery Storage is typically a better choice for long-term energy storage, such as for renewable energy systems (solar or wind) or home energy storage.

Do flywheels store more energy?

The laws of physics (explained briefly in the box below—but you can skip them if you're not interested or you know about them already) tell us that large diameter and heavy wheels store more energy than smaller and lighter wheels, while flywheels that spin faster store much more energy than ones that spin slower.

How does a flywheel create kinetic energy?

To create kinetic energy, the motor derives energy from the electric grid to power the cylinder or disk to spin at a rate of up to 60,000 RPM. Because a flywheel must be accelerated by an external force before it will store energy, it is considered a “dynamic” storage system.

Why is a flywheel considered a dynamic storage system?

Because a flywheel must be accelerated by an external force before it will store energy, it is considered a “dynamic” storage system. The rate at which the flywheel spins remains nearly constant because of the vacuum-like container, which prevents friction from slowing the revolution.



## Does flywheel energy storage mean the flywheel keeps spinning

---



### [Flywheel Energy Storage System Basics](#)

Practical Applications for Flywheel Energy Storage Several innovative power utilities already use flywheel storage systems to maintain power grid frequency. Renewable ...

### [Product Information](#)

### [How does flywheel energy storage store energy?](#) [, NenPower](#)

Flywheel energy storage refers to a system that stores energy in the form of kinetic energy by rotating a mass at high speed. The stored energy can be released as ...

### [Product Information](#)



### [How Does a Flywheel Energy Storage System Work?](#)

At its core, a flywheel energy storage system consists of a massive rotating disk or rotor contained within a sturdy enclosure. This rotor spins at extremely high speeds, storing ...

### [Product Information](#)

## Flywheel Energy Storage System: What Is It and How Does It ...

Energy Storage: The flywheel continues to spin at high speed, maintaining energy as long as friction and resistance are minimized. The longer it spins, the more energy it holds, similar to ...



## Product Information



### **How do flywheels store energy?**

When there is a sudden surge in renewable energy production (e.g., a gust of wind or a burst of sunshine), the excess energy is used to spin up a flywheel, storing it as rotational ...

## Product Information



## Flywheel Energy Storage Systems (FESS)

Flywheel energy storage systems (FESS) use electric energy input which is stored in the form of kinetic energy. Kinetic energy can be described as "energy of motion," in this case the motion ...

## Product Information

### **12.8V 200Ah**



## Flywheel Energy Storage: How Energy is Stored using ...

The flywheel keeps spinning at a particular speed as long as energy is not retrieved from it. The speed at which the flywheel rotates is reduced when ...

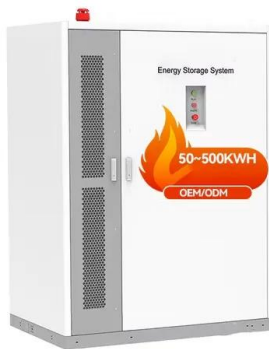
## Product Information



## How do flywheels store energy?

Just as a flywheel needs lots of force to start it off, so it needs a lot of force to make it stop. As a result, when it's spinning at high speed, it tends to want to keep on spinning ...

[Product Information](#)



[What are the flywheel energy storage modes?\\_NenPower](#)

Flywheel energy storage systems function under the principle of kinetic energy conservation. They convert electrical energy into mechanical energy by spinning a ...

[Product Information](#)

## Unlocking the Power of the Flywheel: Unraveling its Purpose and

The flywheel, a seemingly simple yet intricately designed mechanical component, has been a cornerstone of various industrial and technological applications for centuries. From ...

[Product Information](#)



## WHAT IS FLYWHEEL ENERGY STORAGE

What is a flywheel energy storage system? Flywheel energy storage systems (FESS) are a great way to store and use energy. They work by spinning a wheel really fast to store energy, and ...

[Product Information](#)



## Flywheel energy storage

Flywheel energy storage From Wikipedia, the free encyclopedia Flywheel energy storage (FES) works by accelerating a rotor (flywheel) to a very high speed and maintaining the energy in the ...

### [Product Information](#)



### [What are the 4 functions of flywheel?](#)

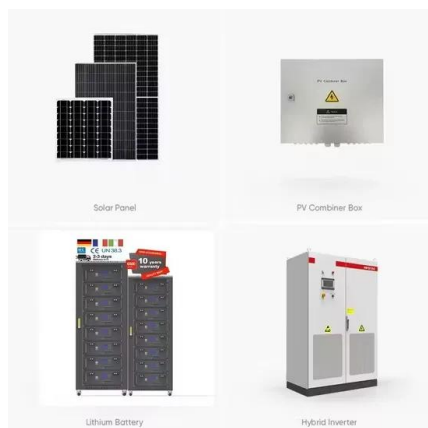
Flywheel energy storage systems (FESS) use electric energy input which is stored in the form of kinetic energy. Kinetic energy can be described as "energy of motion," in this ...

### [Product Information](#)

## [Flywheel Energy Storage . Energy Engineering and Advisory](#)

Because a flywheel must be accelerated by an external force before it will store energy, it is considered a "dynamic" storage system. The rate at which the flywheel spins ...

### [Product Information](#)



### [How Does a Flywheel Energy Storage System Work?](#)

Understanding Flywheel Energy Storage Systems Flywheel energy storage systems have emerged as an innovative solution in the quest for sustainable and efficient ...

### [Product Information](#)





## The Whole Process of Flywheel Energy Storage: From Basics to ...

Unlike chemical batteries that degrade like overworked smartphones, flywheels keep spinning reliably--literally. Who's Reading This? Let's Break It Down. Let's dissect this ...

[Product Information](#)



## Flywheel Energy Storage: How Energy is Stored using Flywheels

The flywheel keeps spinning at a particular speed as long as energy is not retrieved from it. The speed at which the flywheel rotates is reduced when energy is retrieved from it.

[Product Information](#)

## Contact Us

---

For catalog requests, pricing, or partnerships, please visit:  
<https://www.les-jardins-de-wasquehal.fr>