

DC charging pile to charge outdoor power supply





Overview

What is the difference between AC and DC charging pile?

AC charging pile: Often called slow charging pile, charging time is longer (usually takes 6-10 hours). Suitable for home and public parking lots, with low power, usually connected to 220V power supply. Suitable for small passenger electric vehicles. DC charging pile: Called fast charging pile, charging time is short (usually 30 minutes to 2 hours).

What is a public charging pile?

Public charging pile: Established in public places, such as parking lots, for all electric car owners. DC charging piles, charging speed is fast. Dedicated charging pile: Usually installed inside an enterprise or unit, for internal use only. Mostly slow charging piles.

What is the difference between a charging pile and charging station?

A charging pile is a single charging unit for one vehicle, but a charging station consists of multiple charging units to cater to multiple vehicles. Charging stations typically have more complex infrastructure, including energy management, monitoring systems, and additional amenities.

What is a fast charging pile?

DC charging pile: Called fast charging pile, charging time is short (usually 30 minutes to 2 hours). Suitable for electric buses, taxis and other vehicles that need fast charging. The charging power is large, the installation requirements are high, and a special high-load transformer is usually required. Public charging pile:.

What is the difference between indoor and outdoor charging pile?

Indoor charging pile: Installed indoors, with relatively low protection level and low cost. Outdoor charging pile: Designed for outdoor environment, with high waterproof and dustproof level, able to withstand bad weather. Single pile



single gun: Each charging pile is equipped with one charging port.

What are the different types of charging piles?

Private charging pile: Charging piles installed by individuals, usually located in private homes, for personal vehicles. Indoor charging pile: Installed indoors, with relatively low protection level and low cost. Outdoor charging pile: Designed for outdoor environment, with high waterproof and dustproof level, able to withstand bad weather.



DC charging pile to charge outdoor power supply



[Chargers' Manual , PDF , Direct Current , Power Supply](#)

The document provides a comprehensive manual for the 60-180KW DC Charging Pile for electric vehicles, detailing safety precautions, installation instructions, and operational guidelines. It ...

[Product Information](#)

[What is the difference between AC charging pile and DC](#)

This kind of charging pile is usually fixed outside the electric vehicle, connected to the AC power grid, and can directly output DC power to the power supply device of the on ...

[Product Information](#)



[16KW/32KW· H outdoor large-scale energy storage ...](#)

The design product is a new energy storage power station, which is mainly a high-end intelligent energy storage equipment used in households, plant ...

[Product Information](#)



Introduction to DC-Fast Charging Piles for Electric Vehicles

DC electric vehicle charging station, commonly known as "fast charging", is a power supply device that is fixedly installed outside the electric vehicle and connected to the ...



[Product Information](#)



[Power Topologies in Electric Vehicle Charging Stations](#)

1.2 DC Charging Station The DC charging station is a Level 3 charger which can cater for very high power level in the range of 120 to 240 kW. The L3 chargers typically charge batteries to ...

[Product Information](#)



[AC vs DC Charging Piles: 4 Key Differences & Selection Guide](#)

Understanding the differences between AC and DC charging piles. Compare their charging method, construction costs, charging speeds, and applications for your EV ...

[Product Information](#)



[Working principle of DC charging pile](#)

Below, we will outline the working principle of DC charging piles through five aspects: power supply, rectification, control system, charging process, and safety protection.

[Product Information](#)





[Rockwill Energy|Difference Between DC and AC EV Charging ...](#)

The DC charging pile adopts three-phase four-wire power supply system, which can provide enough power and adjust the output voltage and current in a wide range to meet ...

[Product Information](#)



How to Choose the Best Charging Method for an Outdoor Power Supply

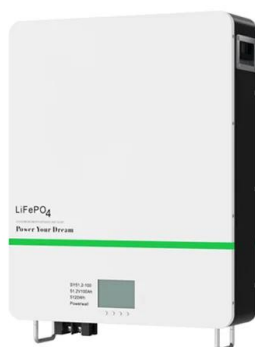
Below, we will introduce several common outdoor power supply methods and their typical application scenarios to help you make an informed decision for your next camping trip, ...

[Product Information](#)

[All about charging pile for Electric Vehicles: Types, Uses](#)

Charging pile, also known as an EV charging point or electric vehicle supply equipment (EVSE), is an energy replenishing device that provides electric vehicles with ...

[Product Information](#)



[What are the components of a DC charging pile](#)

They are able to provide fast charging services, typically fully charging an electric vehicle in 30 minutes to an hour. This paper will introduce the main components of DC charging pile, ...

[Product Information](#)



[DC CHARGING STATIONS GUIDE: SELECTION, ...](#)

THE PERFORMANCE AREA While charging can take up to several hours with standard AC charging stations with outputs of up to 22 kW, DC charging with a CCS or CHAdeMO plug ...

[Product Information](#)



[Pile on to a charger my EV needs power](#)

A charging pile is similar to a charging station where AC power is converted to DC power to charge the battery of the vehicle. However, a charging pile can just be an AC to AC conversion ...

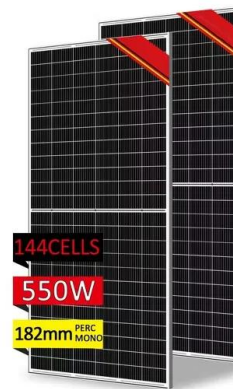
[Product Information](#)



The difference between new energy DC charging piles and AC charging

The charging piles on the market are divided into two types: DC charger and AC charger. The majority of car enthusiasts may not understand it, so I will briefly tell you the secrets.

[Product Information](#)



Energy Storage Charging Pile Management Based on Internet of ...

The traditional charging pile management system usually only focuses on the basic charging function, which has problems such as single system function, poor user ...

[Product Information](#)





New Energy EV Power Supply Equipment Outdoor Emergency Fast Charging

High quality New Energy EV Power Supply Equipment Outdoor Emergency Fast Charging Pile Dc to Ac Portable Power Stations from China, China's leading EV Charging Station product, with ...

[Product Information](#)



How to Choose the Best Charging Method for an Outdoor Power ...

Below, we will introduce several common outdoor power supply methods and their typical application scenarios to help you make an informed decision for your next camping trip, ...

[Product Information](#)

Contact Us

For catalog requests, pricing, or partnerships, please visit:
<https://www.les-jardins-de-wasquehal.fr>