

Communication base station wind power grid connection





Overview

Can wind energy be used to power mobile phone base stations?

Worldwide thousands of base stations provide relaying mobile phone signals. Every off-grid base station has a diesel generator up to 4 kW to provide electricity for the electronic equipment involved. The presentation will give attention to the requirements on using windenergy as an energy source for powering mobile phone base stations.

Why do off-grid telecommunication base stations need generators?

As the incessant demand for wireless communication grows, off-grid telecommunication base station sites continue to be introduced around the globe. In rural or remote areas, where power from the grid is unavailable or unreliable, these cell sites require generator sets to provide power security as prime power or backup standby power.

Why are power systems and communication systems increasingly coupled?

Therefore, power systems and communication systems are increasingly coupled. A power system supplies energy, and a communication system meets the demand for information exchange. A BS is the main intermediary between a communication network and a power network.

What is the access mechanism between EMCs and BSS?

To describe the access mechanism between the EMCs and the BSSs, we introduce an $N_{bs} \times N_{mg}$ connection matrix A , where N_{mg} is the EMCs number and N_{bs} is the number of power towers which is also the number of candidate locations for base stations. It is not necessary for all power towers to be selected as communication power sharing towers.

What is the role of communication infrastructure in modern power systems?

This research underscores the crucial role of efficient communication infrastructure in modern power systems and presents a comprehensive



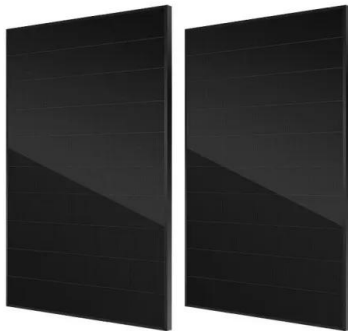
approach that can be used to plan and operate both communication and power systems, ultimately leading to more resilient, efficient, and reliable networks.

How does a base station work?

As shown in Figure S3 each user accesses a base station, and the BS then allocates a channel to each new user when there is remaining channel capacity. If all of the channel capacity of a BS is occupied, a user cannot access this BS and must instead access another BS that is farther away.



Communication base station wind power grid connection



4kw off grid solar wind hybrid power system for communication base

Considering this circumstance, we have independently researched& developed and manufactured our own wind solar hybrid power system for communication base station.

[Product Information](#)

[Wireless Communication Base Station Location Selection ...](#)

1. Introduction Recently, with the rapid development of wireless communication technology, the enhancement of wireless network performance is concerned with meeting the ...

[Product Information](#)



5G and energy internet planning for power and communication ...

Our research addresses the critical intersection of communication and power systems in the era of advanced information technologies. We highlight the strategic ...

[Product Information](#)

Exploiting Wind Turbine-Mounted Base Stations to Enhance ...

We investigate the use of wind turbine-mounted base stations (WTBSs) as a cost-effective solution for regions with high wind energy potential, since it could replace or even outperform ...



[Product Information](#)



Grid Communication Technologies

In the sections that follow, the reader will be given a basic understanding of the variety of media, transport technologies, and protocols available for grid communications, whether owned by ...

[Product Information](#)



[Communication Base Station Smart Hybrid PV Power Supply ...](#)

The Telecom Base Station Intelligent Grid-PV Hybrid Power Supply System helps telecom operators to achieve "carbon reduction, energy saving" for telecom base stations and machine ...

[Product Information](#)



Communication Base Station 4kw off Grid Solar Panel Wind Hybrid Power

Communication Base Station 4kw off Grid Solar Panel Wind Hybrid Power Supply Complete System This product is no longer promoted on Made-in-China . If you find any ...

[Product Information](#)



[How to make wind solar hybrid systems for telecom stations?](#)

Wind solar hybrid systems can fully ensure power supply stability for remote telecom stations. Meet the growing demand for communication services.

[Product Information](#)



The Role of Hybrid Energy Systems in Powering Telecom Base Stations

Hybrid energy solutions enable telecom base stations to run primarily on renewable energy sources, like solar and wind, with the diesel generator as a last resort. This ...

[Product Information](#)

[Protecting U.S. Electric Grid Communications from ...](#)

Abstract A catastrophic outage of the U.S. electric grid could seriously jeopardize national security; threaten critical, life-sustaining services and, consequently, the health of millions of ...

[Product Information](#)



4kw off grid solar wind hybrid power system for communication ...

Considering this circumstance, we have independently researched& developed and manufactured our own wind solar hybrid power system for communication base station.

[Product Information](#)



[Powering Off-Grid Telecommunication Base Stations using](#)

Community Power ignificant opportunity exists to provide environmentally sustainable energy to people in the developing world who live beyond the electricity grid. And it is the mobile ...

[Product Information](#)



[Communication Base Station Smart Hybrid PV Power Supply ...](#)

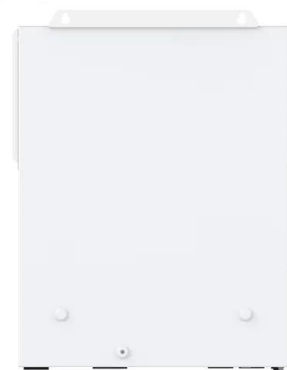
The Ipandee hybrid PV Direct Current (DC) Power Supply System is a green energy power supply solution specifically designed for communication operators to save energy, reduce carbon ...

[Product Information](#)

EN_Connecting wind power to the grid

Cables transmit the generated power to a collector substation where another medium-voltage GIS protects the wind farm on the one hand and the power transformer on the other, and therefore ...

[Product Information](#)



A review of renewable energy based power supply options for ...

Traditionally, these electricity requirements are met using grid electricity, and in the event that this is not available, a diesel generator is utilized which is very carbon intensive ...

[Product Information](#)



Contact Us

For catalog requests, pricing, or partnerships, please visit:
<https://www.les-jardins-de-wasquehal.fr>