

Can the inverter be connected to two sets of batteries





Overview

So, to sum it up, yes, you can connect multiple batteries to an inverter, but you need to do it right. Consider the type of connection, battery compatibility, inverter rating, charging system, and safety. If you're unsure about anything, it's always a good idea to consult a professional. Can two inverters connect to the same battery bank?

It is possible to connect two inverters to the same battery bank. Either you choose inverters that can communicate with each other or you have two separate inverters powering a different load. Never connect the output of two separate inverters. How many batteries can be connected in parallel to an inverter?

.

Should you connect a battery to an inverter in parallel?

Many people prefer to connect batteries and inverters in parallel. This is because there is less limitation on how many batteries you can connect to your inverter at once. The other thing to consider is your battery charger. The bigger your battery capacity and overall amperage, the more powerful your battery charger needs to be.

How many batteries can I connect to my inverter?

There is no set limit to how many batteries you can connect to your inverter. But you must understand how you connect your batteries together affects what you can and can't do! For example, connecting your batteries in series will be different to connecting in parallel.

Can I add a second battery to my inverter?

Connecting a second battery to your inverter can expand your power storage capacity, but it requires careful consideration of compatibility, proper wiring, and safety measures. By following the steps outlined in this guide and staying vigilant about maintenance, you can effectively integrate a second battery



into your power system.

How do you connect a battery to an inverter?

Attach the inverter's positive cable to the positive terminal of one of the batteries. Connect the inverter's negative cable to the negative terminal of the same battery. Check Connections: Ensure all connections are secure and tight. Test the System: Turn on the inverter and check if it's drawing power from both batteries.

Should Inverter Batteries be wired in series?

If you decide to wire your inverter batteries in series it will increase the voltage and limit how many you can hook up to your inverter. Many people prefer to connect batteries and inverters in parallel. This is because there is less limitation on how many batteries you can connect to your inverter at once.



Can the inverter be connected to two sets of batteries

12.8V 200Ah



[How Do I Connect My Second Battery to My Inverter?](#)

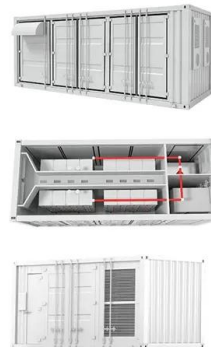
In this article, we will provide a step-by-step guide on how to properly connect a second battery to your inverter, along with important considerations and safety measures.

[Product Information](#)

How to Connect Multiple Batteries for Solar: A Step-by-Step ...

Discover how to efficiently connect multiple batteries for your solar power system in this comprehensive guide. Learn the benefits of different battery types, including lead-acid and ...

[Product Information](#)



Can I Connect Two Inverters To One Battery? A Guide To Off ...

No, two inverters should not be connected to one battery without proper configuration. Using multiple inverters on a single battery can lead to uneven load distribution ...

[Product Information](#)

[Can Two Different Battery Banks Feed One Inverter?](#)

No, two different battery banks should not be connected to one inverter in a standard setup. Mixing different battery banks can lead to unequal charging and discharging ...



[Product Information](#)



Two Inverters on one Battery Bank

It is possible to connect two inverters to the same battery bank. Either you choose inverters that can communicate with each other or you have two separate inverters powering a ...

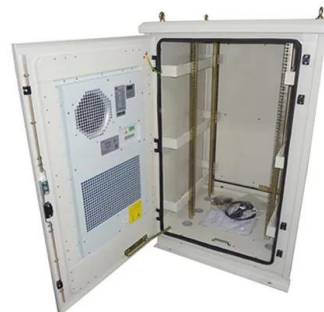
[Product Information](#)



Can You Attach 2 Inverters to a Battery? Wiring Options for Off ...

No, you typically cannot attach two inverters to one battery in a standard setup. Using multiple inverters with one battery can lead to complications in power management and ...

[Product Information](#)



Connecting different batteries to inverters configured in parallel

Check manufacturers instructions. Generally, all parallel inverters must be connected to a single battery bank. And the battery cables need to be the same length to each.

[Product Information](#)





[Can 2 Inverters Be Used with 1 Battery Bank?](#)

In this article, we'll explore whether it's feasible to use two inverters with one battery bank, the necessary precautions to take, and how to optimize your system for long ...

[Product Information](#)



[Mixing solar panels - Dos and Don'ts](#)

The other system components, such as a charge controller, battery, and inverter. There are two main types of connecting solar panels - in series or in parallel. ...

[Product Information](#)

[How To Connect Batteries in Series and Parallel](#)

Connecting batteries in series increases total voltage while maintaining capacity, ideal for high-voltage devices like solar inverters. Parallel connections boost capacity (ampere ...

[Product Information](#)



[How to Run 2 Inverters from One Solar Array?](#)

To run two inverters from one solar array, you need to make sure the inverters and the solar panels' output are compatible, then either connect the inverters in parallel for more capacity ...

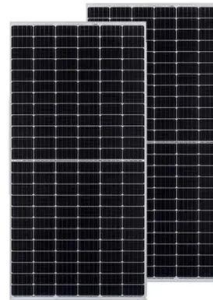
[Product Information](#)



[Question about connecting 2 inverters to 1 battery bank](#)

I checked on this forum before buying and was told that connecting 2 inverters to 1 battery bank would work fine. So I went ahead and purchased a second inverter, I now own ...

[Product Information](#)



[Connecting Multiple Batteries to an Inverter: Easy Guide](#)

There is no set limit to how many batteries you can connect to your inverter. But you must understand how you connect your batteries together affects what ...

[Product Information](#)

[Can I connect multiple batteries to an inverter?](#)

So, to sum it up, yes, you can connect multiple batteries to an inverter, but you need to do it right. Consider the type of connection, battery compatibility, inverter rating, charging system, and ...

[Product Information](#)



[Can 2 Inverters Be Used with 1 Battery Bank?](#)

Yes, you can use two inverters with one battery bank, but there are important considerations to ensure safe and efficient operation. A single battery bank can potentially ...

[Product Information](#)



[Connecting Inverters and Batteries for Maximum Efficiency](#)

Whether you're looking to power your home during an outage or optimize your off-grid setup, knowing how to connect an inverter to two parallel batteries, connect two inverter ...

[Product Information](#)



[Guide to Connecting Two Inverters Together For A...](#)

The AC outputs are also connected in parallel to increase the total power supply to the load. It's important to note that the inverters must have the same ...

[Product Information](#)

[Connecting Multiple Batteries to an Inverter: Easy Guide](#)

There is no set limit to how many batteries you can connect to your inverter. But you must understand how you connect your batteries together affects what you can and can't do! For ...

[Product Information](#)



Contact Us

For catalog requests, pricing, or partnerships, please visit:
<https://www.les-jardins-de-wasquehal.fr>