

# **Can 58v be connected to a 24v inverter**





## Overview

---

A 24V inverter is designed for 24 volts. Connecting it to a 48V battery can lead to overvoltage. This can damage the inverter and any devices plugged into it. Always ensure the inverter specifications match the battery voltage for safe use. Can I run multiple 24V inverters in parallel?

Alternatively, you may want to parallel multiple 24V inverters to reach the power levels of a 48V system. This is my 24V inverter, and it's designed to run in parallel with a communications cable linking them so their power is phase-locked. So, two if these inverters working in parallel could outperform my 48V inverter. Free Shipping!.

How much power does a 24V inverter consume?

A good sized 24V inverter could use about as much power just being on as your lights do. If the lights consume 45 watts and run for 12 hours a day, the total power usage would be  $45 \text{ watts} \times 12 \text{ hours} = 540 \text{ watts}$ . The battery power required for losses plus the load could double that. The lights themselves may be DC, using a small transformer (wall wart) to go from 120Vac to (likely) 12Vdc.

How many volts should I Run my inverters at?

If it is a mobile setup, 24v is fine. If it's a big Class A coach, 48V. If it is your house, 48v. I have a 24v battery bank and 2x3000w inverters (split phase) but I don't plan to run them at 3000w very often, if ever. Right now I have 2 old BYD batteries on one 100amp BMS. A second 100amp BMS on a 280ah Eve setup (parallel to the inverters).

Is 24V or 48V better?

I've read other discussions on this and the consensus seems to be that 24V is acceptable but 48V is preferred. If you are going with inverters 3000 watts or higher than 48V is the way to go because wire sizes become an issue.

How much SCC do I need for a 24v system?



At 24V system voltage you need a charge controller that can handle 120A output to the battery. At 48V it only needs to handle 60A. High amps SCC are expensive or you need multiple smaller ones. And you stated you plan to add more solar. You might want to head over to the "Residential Solar" section of this forum.



## Can 58v be connected to a 24v inverter

---



### [How to Connect 24v solar panel to 12v battery?](#)

Now, the basic concept of battery and solar panel is "12V battery should be charged by 24V solar panel". But there is some confusion - if we connect the solar panel and battery ...

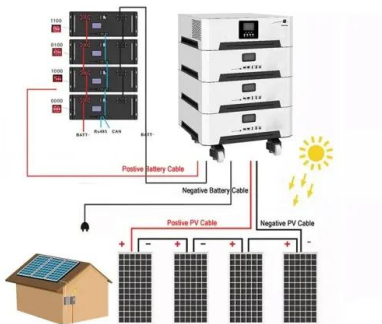
### [Product Information](#)

### [Can a 48V Inverter Work with a 24V Battery?](#)

No, a 48V inverter cannot work directly with a 24V battery without additional modifications. The key reason for this is the difference in voltage. Inverters are designed to ...



### [Product Information](#)



### [Connecting Inverters and Batteries for Maximum Efficiency](#)

Connecting an inverter to two parallel batteries, learning how to connect two inverter generators in parallel, and understanding the nuances of connecting two inverters in parallel ...

### [Product Information](#)

## Why Might You Need a Transformer or Converter When Using a 24V Inverter

No, you cannot use a 24V inverter on a 48V battery. The voltage must match, and connecting a 24V inverter to a 48V battery can damage the inverter and create safety hazards.



## [Product Information](#)



### **Can A 48V Inverter Connect To A 24V Battery? Compatibility And ...**

No, a 48V inverter cannot work with a 24V battery. It needs a 48V DC input to operate correctly. If you provide only 24V, the inverter may not start or will shut down often. To ...

## [Product Information](#)



### **What Are the Alternatives If You Need to Use a 24V Inverter with ...**

If you need to use a 24V inverter with a 48V battery, you have several alternatives. The most common options include using a DC-DC converter, a step-down transformer, or ...

## [Product Information](#)



### **Can I Use A 24V Inverter On A 48V Battery? Compatibility And ...**

Using a 24V inverter with a 48V battery is generally incompatible due to voltage mismatches. The inverter is designed to operate within a specific voltage range, and ...

## [Product Information](#)





## Can A 48V Inverter Connect To A 24V Battery? Compatibility And ...

No, a 48V inverter cannot recognize a 24V input. 48V inverters are designed to work with a specific input voltage range. The difference in voltage means that the inverter will ...

[Product Information](#)



## Can a 48V Inverter Work with a 24V Battery? - A Comprehensive ...

Connecting a 48V inverter directly to a 24V battery is not recommended and can lead to serious technical issues or equipment failure. Here's a detailed look into why this setup ...

[Product Information](#)

## 12V vs 24V Inverter: What's the difference between 12 and 24 Volt

What's the Difference Between a 12 and 24 Volt Inverter? The difference between a 12V and 24V inverter is the amount of input volts it can handle. This is the voltage flowing from the battery ...

[Product Information](#)



**ESS**



## [How to connect 48V panels to 24V installation](#)

Yes, that is a true "24 V" panel. It can be hooked up to a 24 V battery through a PWM (or mppt) controller. What are the specs of your other panels? This is the other one.

[Product Information](#)



## Can I Use a 24V Inverter with a 12V Battery? Compatibility and

Using a 24V inverter with a 12V battery is not recommended. This voltage mismatch can create power limitations and pose safety hazards. For an effective solar energy system, ...

[Product Information](#)



[Advice needed. Converting inverter from 48v to 24v](#)

If you mean can you easily convert a 48 V inverter into a 24 V inverter, the short answer is no. You would need a different transformer turns ratio, dozens of different parts, ...

[Product Information](#)

## Contact Us

For catalog requests, pricing, or partnerships, please visit:  
<https://www.les-jardins-de-wasquehal.fr>