

Battery Inverter Usage





Overview

What does a power inverter do?

What does a power inverter do, and what can I use one for?

A power inverter changes DC power from a battery into conventional AC power that you can use to operate all kinds of devices . electric lights, kitchen appliances, microwaves, power tools, TVs, radios, computers, to name just a few.

What is a battery inverter used for?

RV and Marine Power: Battery inverters are commonly used in RVs and boats to provide AC power from batteries, allowing you to enjoy the comforts of home while on the go. They enable the use of appliances like refrigerators, microwaves, and entertainment systems in recreational vehicles and marine vessels.

Do inverters need batteries?

For most residential and small commercial setups, the traditional battery and power inverter combo is the preferred choice to ensure continuous power supply during blackouts. So, while some inverter types do not require batteries, if your priority is uninterrupted backup power, investing in a quality battery in inverter system is essential.

How long does a battery of inverter provide power?

The duration a battery of inverter can provide power depends on several variables, including battery capacity, load demand, and battery health. For example, a 150Ah tubular battery connected to a 600VA inverter running essential appliances like lights and fans might last between 4 to 6 hours during a power outage.

How long can an inverter supply power?



The duration it can supply power depends on three key factors: Battery Capacity (Ah): The amount of energy stored in the battery. Inverter Efficiency (%): How effectively the inverter converts DC to AC power. Load Power (W): The total wattage consumed by connected devices. This knowledge is crucial for:.

What voltage does a battery inverter use?

Common battery voltages include 12V, 24V, and 48V, and choosing the correct voltage is essential for compatibility. Voltage Output: This parameter indicates the voltage of the AC power that the inverter produces. Standard household voltage is typically 120V or 240V, depending on your location.



Battery Inverter Usage



[What Inverter Size is Best for a 100Ah Battery?](#)

When setting up a solar, off-grid, or backup power system, understanding the compatibility between your battery size and inverter capacity is essential for both performance and safety. A ...

[Product Information](#)

[The Power of Battery Inverters: Converting DC to AC ...](#)

Battery inverters are essential for providing electricity to our homes. They convert direct current (DC) power into alternating current (AC), which is what most ...

[Product Information](#)



[What is a Battery Inverter? A Comprehensive Overview](#)

This comprehensive guide will delve into the battery inverters, exploring their inner workings, diverse applications, and key considerations for choosing the right one for your ...

[Product Information](#)

What Is an AC Battery Inverter? Understanding Its Function and ...

In summary, the use of an AC battery inverter is crucial for contemporary power management systems, allowing you to capture and enhance your solar power effectively while ...



[Product Information](#)



[What does a power inverter do, and what can I use one for?](#)

What does a power inverter do, and what can I use one for? A power inverter changes DC power from a battery into conventional AC power that you can use to operate all kinds of devices

[Product Information](#)

Inverter Usage Calculator

Enter the battery capacity, inverter efficiency, and load power into the calculator to determine the usage time of an inverter. This calculator helps to estimate how long an inverter ...

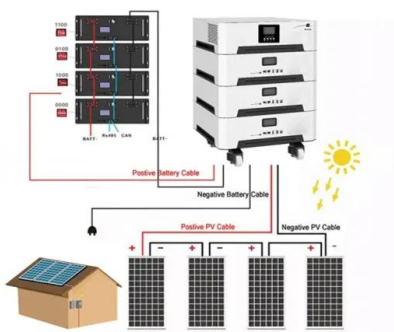
[Product Information](#)



Inverter Power Draw: How Much Power Does an Inverter Use from a Battery?

Inverter power draw from a battery depends on several factors, including inverter efficiency, load demand, input voltage, and battery condition. Understanding these factors ...

[Product Information](#)





7 Applications of Inverter , Importance & Uses of Power Inverter

What is an inverter? What are the applications of inverter? Importance of inverter - smart grid system, electric vehicles (vehicle to home and vehicle to grid).

[Product Information](#)



 LFP 48V 100Ah



The Power of Battery Inverters: Converting DC to AC for Household Use

Battery inverters are essential for providing electricity to our homes. They convert direct current (DC) power into alternating current (AC), which is what most household appliances and ...

[Product Information](#)

Inverter for Car: Everything You Need to Know Before You Plug In

Power up on the go with an inverter for car--discover how to use it safely, what to run, and how to protect your battery. A must-read for every driver!

[Product Information](#)



How Inverters Work with Batteries: A Beginner's Complete Guide ...

The inverter converts direct current (DC) from the battery to alternating current (AC) for use in household appliances. The battery stores electrical energy for later use, ensuring a ...

[Product Information](#)



Battery Inverter: What It Is, Key Functions, Applications, and More

A battery inverter is a device that converts battery power from direct current (DC) to alternating current (AC). It typically works with a battery bank in off-grid solar installations. ...

[Product Information](#)



[What Will An Inverter Run & For How Long? \(With Calculator\)](#)

This comprehensive guide will delve into the battery inverters, exploring their inner workings, diverse applications, and key considerations for ...

[Product Information](#)

Ultimate Guide to Battery in Inverter: Choose & Maintain Right

Without an inverter, the energy stored in a battery would be virtually useless for powering these AC-based devices. An inverter without a battery is like a car without an engine. ...

[Product Information](#)



[Calculate Battery Size for Inverter Calculator](#)

The Calculate Battery Size for Inverter Calculator helps you determine the optimal battery capacity needed to support your inverter system. By inputting critical parameters such ...

[Product Information](#)





Usage Chart

The difference is the type of battery you want to run your power inverter on. Most vehicles run off a 12 volt battery. The 24 volt are generally used in large trucks or industrial motors. For more ...

[Product Information](#)



Contact Us

For catalog requests, pricing, or partnerships, please visit:
<https://www.les-jardins-de-wasquehal.fr>