

# Base station power supplies cannot be declared





## Overview

---

Why is my base station not working?

Consider trying a different power outlet to isolate the issue further. If you're still getting no power at all to the base station on a different outlet, try another power adapter with the same specs if you have one available. Please let us know if you're still having trouble! Consider trying a different power outlet to isolate the issue further.

Why do cellular base stations need maintenance?

Cellular base stations use power without any interruption and also needs maintenance. The increase in demand of power base stations from Indian telecommunication industry is a big challenge, especially in rural India.

How to design a solar-powered base station?

In order to design and implement a solar-powered base station, PVSYST simulation software has been used in various countries including India, Nigeria, Morocco, and Sweden. This software allows for estimation of the number of PV panels, batteries, inverters, and cost of production of energy considering the geographical and other design parameters.

How can the electronic industry reduce power requirements for base stations?

As a result, the electronic industry is exploring new methods to reduce the power requirements for the electronic equipment used in the base stations. The first approach is to make the base stations more tolerant to heat which will then require less power for air conditioning.

How much power does a cellular base station use?

This problem exists particularly among the mobile telephony towers in rural areas, that lack quality grid power supply. A cellular base station can use anywhere from 1 to 5 kW power per hour depending upon the number of transceivers attached to the base station, the age of cell towers, and energy



needed for air conditioning.

What if my power supply is off?

If off or amber, you can try a 3rd party power supply with the same voltage and current ratings as well as the proper polarity and size plug. Of course, it could be a dead base. 2017-05-05 04:21 PM I will probably not be replacing this one as this is to much hassle to replace. 2017-05-07 03:21 PM



## Base station power supplies cannot be declared

---



### [Do I ground a mobile unit when used as a base station.](#)

It looks like that power supply probably connects the DC - to AC line ground, which is a bad idea in the long run. Fortunately, you can probably fix that by removing the other wire that connects ...

### [Product Information](#)

### Base Station not powering on

If you're still getting no power at all to the base station on a different outlet, try another power adapter with the same specs if you have one available. Please let us know if ...

### [Product Information](#)



### [Transmitter base station not working at all](#)

If the base station is not turning on when power is connected to either the DC-In jack or the mini USB port then there is a problem with the power supply circuit on the ...

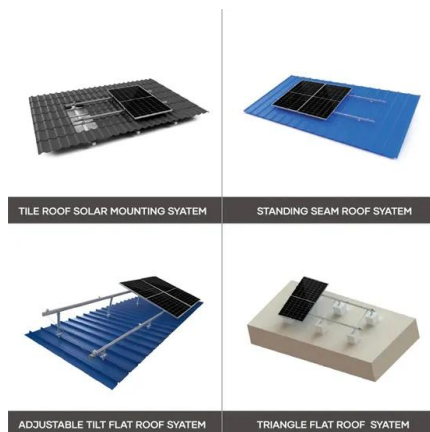
### [Product Information](#)

### [Base station 2.0 replacement power cable? : r/ValveIndex](#)

I've been waiting for valve to replace my base station power cable for three months, and they won't recommend a 3rd party option. Has anyone had to use a 3rd party power supply for their ...



## [Product Information](#)



### [6.2 Base station output power - TechSpec](#)

For a BS declared to be capable of multi-carrier operation, set the base station to transmit according to TM1 on all carriers configured using the applicable test configuration and ...

## [Product Information](#)

### [Do I ground a mobile unit when used as a base station.](#)

It looks like that power supply probably connects the DC - to AC line ground, which is a bad idea in the long run. Fortunately, you can probably fix that by removing the other wire ...



## [Product Information](#)



### **MM-015039-001, MASTR V Base Station**

This base station is not intended for use by the "general population" in an uncontrolled environment. It is the responsibility of the base station licensee to ensure that the maximum ...

## [Product Information](#)



## Do 1.0 and 2.0 basestations use the same power

...

The power supply that the Index basestation ships with are lower amps than the 1.0 basestations, Since the 1.0 basestations call for a 2.5A power supply, I ...

## Product Information



## Base station sleep/power off problem returned with 1.8.3

Other users have reported that connecting the base stations to a un-interruptible power supply (UPS) has resolved the problem. If you encounter similar issues after testing ...

## Product Information



## Building better power supplies for 5G base stations

Building better power supplies for 5G base stations Authored by: Alessandro Peveri, and Francesco Di Domenico, both at Infineon Technologies Infineon Technologies - Technical ...

## Product Information



## Base station power supply dead : r/Vive

I got my Vive yesterday and after only a few hours total of VR, one of my base stations wasn't detected, so after switching outlets and re-plugging the cord, I tried my other base station ...

## Product Information



### [Base station power supplies keeps failing : r/ValveIndex](#)

Base station power supplies keeps failing I've had my kit just after the product launch, and been dealing with frequent power failure of the base station's power supplies. I have them always ...

#### [Product Information](#)



### [Basestation Power Supply - Tundra Labs](#)

This item is a recurring or deferred purchase. By continuing, I agree to the and authorize you to charge my payment method at the prices, frequency and dates listed on this page until my ...

#### [Product Information](#)

### [Optimum sizing and configuration of electrical system for](#)

Optimization in electrical systems of telecommunication can be discussed in terms of energy efficiency, cost reduction, reliability, and environmental impact. Energy efficiency ...

#### [Product Information](#)



### **Machine learning for base transceiver stations power failure ...**

Base Transceiver Stations (BTSs), are foundational to mobile networks but are vulnerable to power failures, disrupting service delivery and causing user inconvenience. This ...

#### [Product Information](#)



## Contact Us

---

For catalog requests, pricing, or partnerships, please visit:  
<https://www.les-jardins-de-wasquehal.fr>