

Base Station Power Connection





Overview

How do I connect a base station to a power source?

Connect the base stations to power: Use the provided power adapters to connect each base station to the power source. Ensure a secure connection and confirm that the power indicators on the base stations are illuminated. 3.

How do I install a base station?

Once you have identified the perfect spot, use the provided mounting kits to securely attach the base stations to the wall or tripod. After installation, connect the power adapters to each base station and plug them into a power outlet. Ensure that the power cables are properly secured and out of the way to prevent any accidents during gameplay.

How do I connect my base station to my PC?

Plug in the base station to your PC via the USB cable. Plug in the power cable to your base station, while holding down the channel button (Windows should recognize a storage drive called CRP_DISABLED).

What type of connector is used for the base station power cable?

The cable going between the wall wort and the base station had the connector snap in the wall wort. It's a small two prong adapter with a plastic flange that seems like it'd be relatively simple to re-solder if I could find a spare, but I have no idea how to find it.

What are the components of a base station?

Power Supply: The power source provides the electrical energy to base station elements. It often features auxiliary power supply mechanisms that guarantee operation in case of lost or interrupted electricity, during blackouts. **Baseband Processor:** The baseband processor is responsible for the processing of the digital signals.



How do I setup a steam base station?

To ensure a smooth setup process, follow these steps: 1. Check the power requirements: Before connecting the base stations, make sure you have the necessary power supply. Steam Base Stations typically require an outlet with a voltage of 15V DC and a minimum current of 1.2A. Verify this information on the power adapter labels. 2.



Base Station Power Connection



[Installation Manual for the BS4 Basestation](#)

Isolate and test the source power supply and connect the base station power cable to the supply via a connector or junction box suitable for the installation environment.

[Product Information](#)

What type of connector is used for the base station power cable?

What type of connector is used for the base station power cable? The cable going between the wall wort and the base station had the connector snap in the wall wort.

[Product Information](#)



ESS



The Inner Workings of Steam Base Stations: A Comprehensive ...

If your steam base stations are not syncing, the first step is to verify their power and connections. Ensure that each base station is plugged into a functional power outlet and ...

[Product Information](#)

Will My SimpliSafe® System Still Work if I Lose Power or Wi-Fi Connection?

SimpliSafe keeps you protected 24/7! In the event of a power outage, your SimpliSafe® Base Station is equipped with a backup rechargeable battery supply that will keep your Base Station ...



[Product Information](#)

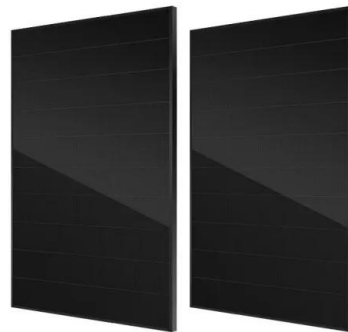
PUSUNG-R (Fit for 19 inch cabinet)



[Basestations power management is not working anymore](#)

Plug in the base station to your PC via the USB cable. Plug in the power cable to your base station, while holding down the channel button (Windows should recognize a ...

[Product Information](#)



[How Do I Connect Steam Base Stations? A Step-by-Step Guide](#)

After installation, connect the power adapters to each base station and plug them into a power outlet. Ensure that the power cables are properly secured and out of the way to ...

[Product Information](#)



[Base Station Power Managment Connection Failure](#)

@Krogenit - It seems like you're on the beta branch of 1.8.20 - this is now the main stable branch of as Friday the 8th and it contains updates that specifically modify how base ...

[Product Information](#)



[Basestations power management is not working anymore](#)

Plug in the base station to your PC via the USB cable. Plug in the power cable to your base station, while holding down the channel button (Windows should recognize a storage drive ...

[Product Information](#)



[LLVD & BLVD in Base Station Power Cabinets](#)

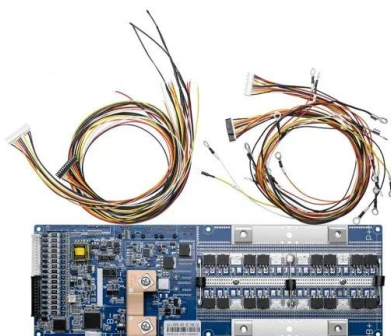
LLVD is a power management mechanism that automatically disconnects the load (i.e., base station equipment) when the power system detects that the output voltage falls below a set ...

[Product Information](#)

[Power consumption based on 5G communication](#)

This paper proposes a power control algorithm based on energy efficiency, which combines cell breathing technology and base station sleep technology to reduce base station energy ...

[Product Information](#)



[Arlo Base Station Connection offline after a power outage](#)

2019-03-06 12:52 AM I've moved the base station off the powerline adaptor and plugged it straight into the modem. All lights (power, web, etc) are green. The router is showing it has a ...

[Product Information](#)



Connecting Your DataMan Intelligent Base Station to the Network

If you want to connect the Ethernet cable directly to the network or your PC, power up the base station using a 24V power supply. If you want to use a Power over Ethernet (POE) adapter, ...

[Product Information](#)



Contact Us

For catalog requests, pricing, or partnerships, please visit:
<https://www.les-jardins-de-wasquehal.fr>