

Automatic edge trimming of double-glass modules





Overview

What is auto trimming & glue dispensing machine?

The Automatic Trimming machine is used to trim/remove any excess materials from the module edges after the lamination process. This is used to flip modules 90° under which operators can inspect and confirm the module quality. The Auto Framing and Glue Dispensing machine is used to grab and install glue-coated aluminum frames automatically.

What is double-glass sealing machine & laminator?

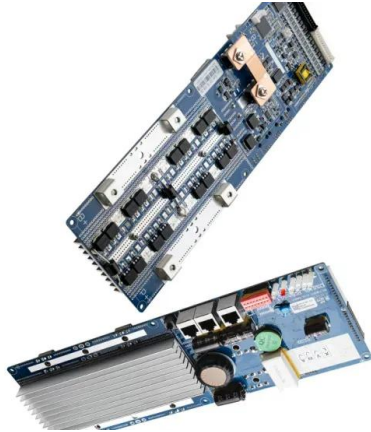
The Double-Glass Sealing machine is used for the automatic tape edge banding/sealing process of the double-glass module before lamination. The Laminator is used to package and seal solar modules via heating and vacuuming processes.

What is the difference between auto framing & glue dispensing machine?

The Auto Framing and Glue Dispensing machine is used to grab and install glue-coated aluminum frames automatically. The J-box Glue Dispensing machine is used to automatically apply glue to the bottom of the junction box. J-box Soldering is used for the automatic junction box soldering process.



Automatic edge trimming of double-glass modules



Module Line Automation

The four sides of the double glass adopt a belt servo drive mechanism. After the double glass enters, it returns to the right, the lower suction cup mechanism is lifted, and the suction cup is ...

[Product Information](#)

SOLAR/PV EQUIPMENT - Semiphoton

Automatic glass handling, loading, and placement are applicable in the production of double glass modules. A repair manipulator is used to remove the upper layer of glass and reapply it again ...

[Product Information](#)



[Gaorun - Line Automation , Turnkey Solution for Solar ...](#)

Gaorun Is a Global Supplier to Provide Photo voltaic production Automation Solution. String Layup, Inline Conveyors, Auto Inline Framing, Auto Trimming, ...

[Product Information](#)



Automatic trimming machine for solar cell modules and their glass

It is an automatic trimming machine for solar cell modules and their glass product laminates, which is easy to control, has complete component corner cutting, low cost, convenient ...



[Product Information](#)



[Auto Trimming Machine,Radiant Pv Solar](#)

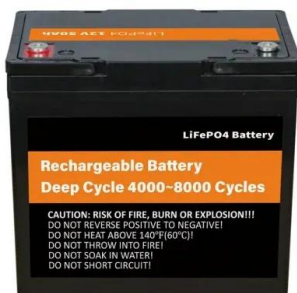
1.The design of the arc knife edge improves the trimming effect,the cutting edge is smooth,no burr. 2.4 unit drivers control 4 cutter heads,move in all directions with 8 cutter. 3.Lifetime of ...

[Product Information](#)

SOLAR/PV EQUIPMENT - Semiphoton

Automatic glass handling, loading, and placement are applicable in the production of double glass modules. A repair manipulator is used to remove the upper layer of glass and ...

[Product Information](#)



[Automatic Trimming Machine , Solar Module Manufacturing ...](#)

An automatic trimming machine is used to automatically remove burrs and exceed materials from PV module edges after lamination. It can adapt to different sizes and shapes of panels and ...

[Product Information](#)



[Automatic Trimming Station for Solar Modules](#)

The ECOTRIM A is a robust automatic trimming station designed to enhance the efficiency of PV module production. This station swiftly trims the four edges of a module, removing any excess ...

[Product Information](#)



[Automatic flanging machine. Automatic edge-trimming machine](#)

High-speed intelligent glass straight line double edge grinding production line is a machine specially used for processing flat glass double straight edges, suitable for deep processing of ...

[Product Information](#)

[Automatic Trimming Station for Solar Modules](#)

The ECOTRIM A is a robust automatic trimming station designed to enhance the efficiency of PV module production. This station swiftly trims the four edges of ...

[Product Information](#)



AUTO TRIMMING MACHINE · Double100

This unit is mainly applied to remove and clean the remains of excessive glue of the modules after laminated; it works self-acting cutting through program setting which can smoothly remove ...

[Product Information](#)



Post-Lamination Manufacturing Process Automation for ...

This system consists of two automated machines, an edge trimmer for trimming excess encapsulant and back cover film from module edges after lamination, and an edge sealer and ...

Product Information



Auto Trimming Machine

Description Is an automatic trimming solution for edge cutting of the PV module. The machine loads and centres the panel from the long edge and trims simultaneously the four edges of the ...

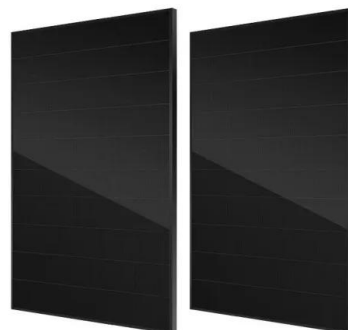
Product Information



Double-glass PV modules with silicone encapsulation

ABSTRACT Double-glass PV modules are emerging as a technology which can deliver excellent performance and excellent durability at a competitive cost. In this paper a glass-glass module

Product Information



Hebei Yiheng Science & Technology Co.,Ltd.

Double-glass Module Automatic Sealing Tape Machine Professional for the edge-sealing process for double glass module, instead the traditional manual edge sealing

Product Information



Contact Us

For catalog requests, pricing, or partnerships, please visit:
<https://www.les-jardins-de-wasquehal.fr>