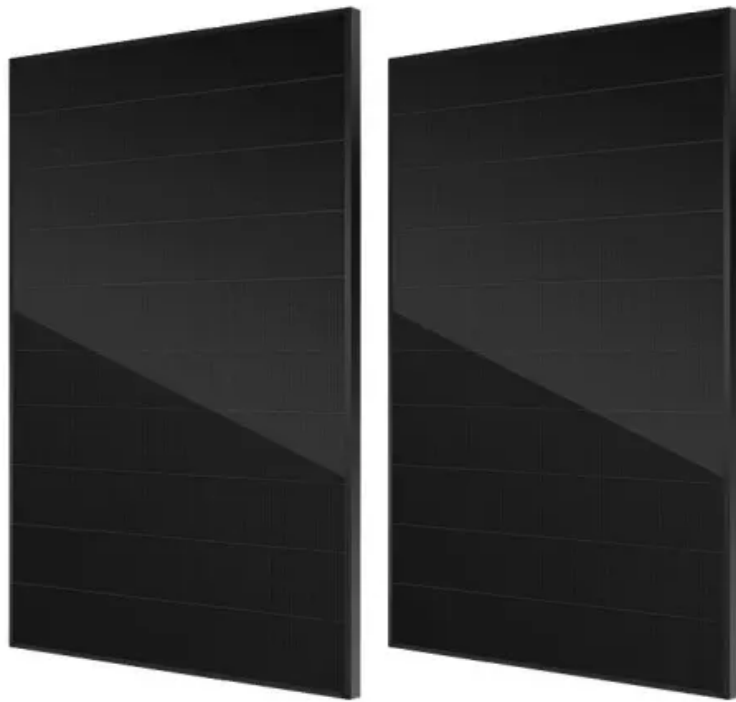


5g base station power consumption is too high





Overview

How much power does a 5G station use?

The power consumption of a single 5G station is 2.5 to 3.5 times higher than that of a single 4G station. The main factor behind this increase in 5G power consumption is the high power usage of the active antenna unit (AAU). Under a full workload, a single station uses nearly 3700W.

Why does 5G use more power than 4G?

The data here all comes from operators on the front lines, and we can draw the following valuable conclusions: The power consumption of a single 5G station is 2.5 to 3.5 times higher than that of a single 4G station. The main factor behind this increase in 5G power consumption is the high power usage of the active antenna unit (AAU).

How does mobile data traffic affect the energy consumption of 5G base stations?

The explosive growth of mobile data traffic has resulted in a significant increase in the energy consumption of 5G base stations (BSs).

What is 5G BS power consumption?

The 5G BS power consumption mainly comes from the active antenna unit (AAU) and the base band unit (BBU), which respectively constitute BS dynamic and static power consumption. The AAU power consumption changes positively with the fluctuation of communication traffic, while the BBU power consumption remains basically unchanged , , .

What is 5G base station?

1. Introduction 5G base station (BS), as an important electrical load, has been growing rapidly in the number and density to cope with the exponential growth of mobile data traffic . It is predicted that by 2025, there will be about 13.1 million BSs in the world, and the BS energy consumption will reach 200



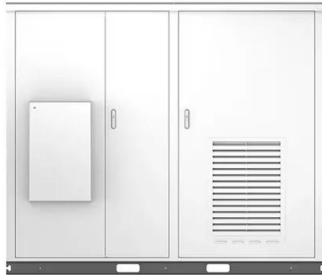
billion kWh .

Does 5G New Radio save energy?

Emerging use cases and devices demand higher capacity from today's mobile networks, leading to increasingly dense network deployments. In this post, we explore the energy saving features of 5G New Radio and how this enables operators to build denser networks, meet performance demands and maintain low 5G energy consumption.



5g base station power consumption is too high



[Energy Management of Base Station in 5G and B5G: Revisited](#)

Since mmWave base stations (gNodeB) are typically capable of radiating up to 200-400 meters in urban locality. Therefore, high density of these stations is required for actual 5G deployment, ...

[Product Information](#)

[What are the power delivery challenges with 5G to maximize](#)

It's been estimated that base station resources are generally unused 75 - 90% of the time, even on high-load networks. The base station power consumption constituents are ...

[Product Information](#)



[Energy-saving Scheme of 5G Base Station Based on LSTM ...](#)

Abstract. As China's new infrastructure, 5G has received national and social attention. 5G promotes economic to grow rapidly. But, the high energy consumption caused by ...

[Product Information](#)

[How Much Power Does 5G Base Station Consume?](#)

Have you ever wondered how much energy our hyper-connected world is consuming? 5G base stations, the backbone of next-gen connectivity, now draw 3-4 times more power than their 4G ...



[Product Information](#)



[A technical look at 5G energy consumption and performance](#)



The power consumption of a single 5G station is 2.5 to 3.5 times higher than that of a single 4G station. The main factor behind this increase in 5G power consumption is the high power ...

[Product Information](#)

Modelling the 5G Energy Consumption using Real-world Data: ...

This paper proposes a novel 5G base stations energy consumption modelling method by learning from a real-world dataset used in the ITU 5G Base Station Energy Consumption Modelling ...



[Product Information](#)



[Machine Learning and Analytical Power Consumption...](#)

Abstract--The energy consumption of the fifth generation (5G) of mobile networks is one of the major concerns of the telecom industry. However, there is not currently an accurate and ...

[Product Information](#)



[A technical look at 5G energy consumption and performance](#)

In this post, we explore the energy saving features of 5G New Radio and how this enables operators to build denser networks, meet performance demands and maintain low 5G ...

[Product Information](#)



Machine Learning and Analytical Power Consumption Models for 5G Base

The energy consumption of the fifth generation (5G) of mobile networks is one of the major concerns of the telecom industry. However, there is not currently an accurate and ...

[Product Information](#)



Optimal configuration for photovoltaic storage system capacity in 5G

Base station operators deploy a large number of distributed photovoltaics to solve the problems of high energy consumption and high electricity costs of 5G base stations. In this ...

[Product Information](#)



Why does 5g base station consume so much power and how to ...

5G base stations use high power consumption and high RF signals, which require more signal processing for digital and electromechanical units, and also put greater pressure ...

[Product Information](#)





[Front Line Data Study about 5G Power Consumption](#)

The power consumption of a single 5G station is 2.5 to 3.5 times higher than that of a single 4G station. The main factor behind this increase in 5G power consumption is the high power ...

[Product Information](#)



What is the reason for the high energy consumption of 5G base station

Let me explain it to you. The energy consumption of 5G base stations is mainly concentrated in four parts: base stations, transmission, power supply and air conditioning in ...

[Product Information](#)

[5G power consumption is 2.5 to 3 times of 4G](#)

The power consumption of a 5G single station is 2.5 to 3.5 times that of a 4G single station due to AAU power consumption, the current full load power of a single station is nearly ...

[Product Information](#)



The huge power consumption and base station density of 5G ...

It is precisely because the density of 5G base stations is too high that construction costs are high, and the power consumption of 5G base stations is too high, which leads to high operating costs.

[Product Information](#)



Energy consumption optimization of 5G base stations considering

An energy consumption optimization strategy of 5G base stations (BSs) considering variable threshold sleep mechanism (ECOS-BS) is proposed, which includes the initial ...

[Product Information](#)



How much power does 5G consume?

When base stations, data centers and devices are added together, telecommunications will consume more than 20% of the world's electricity by 2025, says Huawei analyst Dr. Anders ...

[Product Information](#)

Technical Requirements and Market Prospects of 5G Base Station ...

5G networks use a broader range of spectrum resources, particularly the millimeter-wave bands (24 GHz and above). Base station chips must be capable of efficiently ...

[Product Information](#)



What is 5G Energy Consumption?

5G Base Station Power Consumption: With each base station carrying at least 5X more traffic and operating over more frequency bands, 5G base station power consumption is at least twice ...

[Product Information](#)



[What is the Power Consumption of a 5G Base Station?](#)

These 5G base stations consume about three times the power of the 4G stations. The main reason for this spike in power consumption is the addition of massive MIMO and ...

[Product Information](#)



Contact Us

For catalog requests, pricing, or partnerships, please visit:
<https://www.les-jardins-de-wasquehal.fr>