

500W solar power generation in one day





Overview

A 500W solar panel can generate approximately 2 to 3 kWh of electricity per day under optimal conditions, which include ample sunlight and no obstructions. The actual output may vary based on factors such as location, weather, and panel orientation. How much power does a 500 watt solar panel produce?

A 500-watt solar panel will produce 2 kilowatt-hours (kWh) of daily power in typical conditions. They have an efficiency rating of around 21%.

How many kWh does a 300W solar panel produce a day?

We can see that a 300W solar panel in Texas will produce a little more than 1 kWh every day (1.11 kWh/day, to be exact). We can calculate the daily kW solar panel generation for any panel at any location using this formula. Probably, the most difficult thing is to figure out how much sun you get at your location (in terms of peak sun hours).

How much energy does a 100 watt solar system produce?

A 100-watt solar panel installed in a sunny location (5.79 peak sun hours per day) will produce 0.43 kWh per day. That's not all that much, right?

However, if you have a 5kW solar system (comprised of 50 100-watt solar panels), the whole system will produce 21.71 kWh/day at this location.

What is a 500W solar panel?

A 500W solar panel with a higher efficiency rating is always smaller than a 500W panel with a lower efficiency rating. This means two things: For example, a solar panel with an efficiency of 22% is measuring 89.72" by 44.65" which is 2.6m² or (28 sq. ft.) We can calculate the solar output of a square meter:.

How much power does a 1000 watt solar panel produce?



Interestingly, a 1000 watt solar panel paired with a 12V battery can produce around 80-83 amps of electric current. To sum up, how much power 100W, 500W, and 1000W solar panel produces can vary from 300 to 1200 Watt, depending on their efficiency and exposure to sunlight.

How much energy do solar panels produce?

Two variables dictate how much energy your solar panels produce: 1. Solar Panel Wattage: Higher-wattage panels generate more kWh. Common sizes include 100W (small setups), 300-400W (residential), and 500W+ (commercial systems). Example: A 500W panel produces 50% more energy than a 250W panel under the same conditions. 2. Peak Sun Hours:



500W solar power generation in one day

Lithium Solar Generator: \$150



How to Calculate Daily kWh from Your Solar Panels - EcoVault

Common sizes include 100W (small setups), 300-400W (residential), and 500W+ (commercial systems). Example: A 500W panel produces 50% more energy than a 250W ...

[Product Information](#)

[How Much Energy Can a Solar Panel Generate Per Day](#)

Australia is one of the sunniest countries on Earth, making it ideal for solar energy production. But many homeowners and businesses still wonder: how much energy can a solar ...

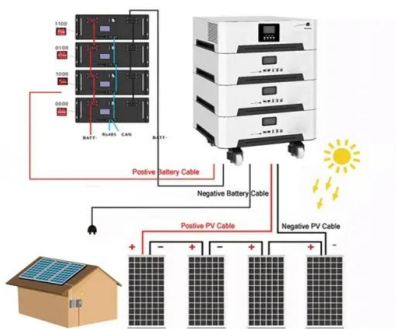
[Product Information](#)



Has really no one ever tested to get power from sunrise till sunset

Facing one set of panels east and one set west will reduce your daily total solar power production, but will increase the time you are producing power. So rather than one ...

[Product Information](#)



[How Much Energy Does A Solar Panel Produce?](#)

Most solar panels you can find today are rated between 250 and 550 watts of power. The wattage (W) is what solar manufacturers and installers put first in the product ...

[Product Information](#)



[500w solar panel power generation per day](#)

500w solar panel power generation per day How much power does a 500 watt solar panel generate? Typically, a 500 W solar panel will generate about 2 kilowatt-hours(kWh) of daily ...

[Product Information](#)



[How much will a 500 watt solar panel run](#)

Q: How much electricity can a 500 watt solar panel run? A: A 500 watt solar panel can generate approximately 2.5 kilowatt-hours (kWh) of electricity per day, depending on ...

[Product Information](#)



[Average Solar Panel Output Per Day: UK Guide . Renogy UK](#)

How much power does a solar panel produce per day in UK? Now learn all about the average solar output per day, month, and year for solar panels in this article.

[Product Information](#)





[How much Power does 100W, 500W and 1000W Solar Panel ...](#)

How much Power and Amps does a 500 Watt Solar Panel Produce? Normally, a 500-watt solar panel can produce approximately 2500 watts of power under direct sunlight if ...

[Product Information](#)



[Are 500-Watt Solar Panels The Best Option?](#)

Typically, a 500 W solar panel will generate about 2 kilowatt-hours (kWh) of daily power and 731 kWh of annual power. Just be aware that actual solar panel power output you will see will vary ...

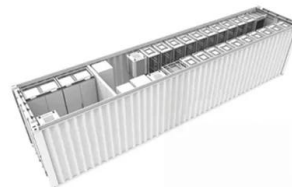
[Product Information](#)



[500w solar panel power generation per day](#)

How much power does a 500 watt solar panel produce? nd 2kWh daily and 731kWh of annual power. Remember that the actual power output will vary depending on various factors. The ...

[Product Information](#)



[How Many kWh Does A Solar Panel Produce Per Day?](#)

To illustrate how many kWh different solar panel sizes produce per day, we have calculated the kWh output for locations that get 4, 5, or 6 peak sun hours. Here are all the results, gathered in ...

[Product Information](#)





How much electricity can a 500w solar panel generate in a day

A 500W solar panel can generate approximately 2 to 3 kWh of electricity per day under optimal conditions, which include ample sunlight and no obstructions. The actual output ...

[Product Information](#)



[Does a 500W system produce 500W a day? A week? A month?](#)

In other words, a 500W solar system with an 18% capacity factor will produce around 2.1 kWh per day on average, or 788 kWh per year. This is equivalent to running a 100W light bulb for about ...

[Product Information](#)

500W Solar Panel Power Generation Per Day: 2025 Real-World ...

Meta Description: Discover how much energy a 500W solar panel actually produces daily, with 2025 industry data, regional comparisons, and actionable optimization strategies backed by ...

[Product Information](#)



[500w solar panel power generation per day](#)

The first factor in calculating solar panel output is the power rating. There are mainly 3 different classes of solar panels: 1. Small solar panels: 50W and 100W panels. 2. Standard solar ...

[Product Information](#)





Contact Us

For catalog requests, pricing, or partnerships, please visit:
<https://www.les-jardins-de-wasquehal.fr>