

12v 6000 watt high power inverter current





Overview

Can a 6000 watt inverter run a 12 volt battery?

A 6000W inverter is considered as a large-size unit. It can be used to run heavy appliances because 6000-watt output is huge. On this page, I have included only those power inverters that have 6000W output power and they can be connected with 12-volt batteries.

What is the best 6000W inverter?

In the best 6000W inverter reviews, this AIMS pure sine wave power converter is the first participant. The AIMS power inverter has many highlights such as 18000-watt surge power, low frequency, GFCI outlets and true sine wave reliable output. To use this inverter, you need a 24V battery because it delivers 120/240 volt AC power.

What is a 6000 watt DC to AC power inverter?

This 6000 Watt 12 Volt DC to AC Power Inverter is specially designed to perform under extreme conditions. With its reinforced steel brackets the model is made to absorb the shocks of the road in a mobile application.

How many amps can a 6000 watt power inverter run?

This large 6000 watt 12 volt dc to 120 volt ac power inverter can operate up to 50 amps of alternating power. With this much power to can backup your entire house. This power inverter can operate all types electronics, full size air conditioner s and water pumps.

How does a pi 6000 watt inverter work?

The PI-6000 takes direct current from a 12 volt battery system and converts it into standard 120 volt ac power. The 6000 watt 12 volt dc to 120 volt ac power inverter includes digital monitoring which allows you to views dc battery voltage and watt load applied. And with four non-split ac outlets you can operate the full load off any one outlet.



How far away can the power bright pw6000-12 power inverter work?

Remote works up to 150 ft away! The Power Bright PW6000-12 6000 Watt 12 Volt DC to AC modified sine wave Power Inverter can be hardwired directly to the panel in your home.



12v 6000 watt high power inverter current



PW6000-12 12V DC to AC 6000W Modified Sine Wave Power Inverter...

This heavy duty inverter plugs directly to 12 Volt DC battery to power large appliances, air conditioner, heavy duty power tools and many others electronics in your vehicle.

[Product Information](#)

[12V 6000 Watt Pure Sine Wave Inverter](#)

This ample power rating makes 6000w pure sine wave inverter suitable for running high-demand appliances such as refrigerators, air conditioners, power tools, and even some smaller ...

[Product Information](#)



PowerBright(TM) 12-Volt 6,000-Watt-Continuous Modified Sine Wave Inverter

A 12-volt power inverter converts 12-volt DC power or direct current to standard AC power or alternating current, which allows you to run electrical equipment off your car or marine battery ...

[Product Information](#)

VEVOR Modified Sine Wave Power Inverter 6000W 12000W dc 12V ...

We designed the VEVOR modified sine wave power inverter to provide consistent and reliable power for a wide range of devices. It has 6000W continuous power output and 12000W surge ...



[Product Information](#)



- ✓ 100KWH/215KWH
- ✓ LIQUID/AIR COOLING
- ✓ IP54/IP55
- ✓ BATTERY 6000 CYCLES

CHENGSI 6000 Watt Power Inverter 12V DC to 110V AC Converter Peak Power

Buy CHENGSI 6000 Watt Power Inverter 12V DC to 110V AC Converter Peak Power 6000W Car Inverter with LED Display 2 Battery Clips Plug Cable and English Manual, for RV, Truck, Off ...

[Product Information](#)

CJ CJ6000Q Ac Inverter 12V

The CJ CJ6000Q is an impressive 6000-watt AC inverter, specifically designed for 12-volt systems. This inverter stands out due to its high power output, making it an excellent choice ...

[Product Information](#)



AIMS Power 6000 W / 18000W Peak Pure Sine Inverter Charger ...

AIMS Power, backed with over 20 years of experience and exceptional customer service has designed this industrial grade, 6000 Watt Pure Sine Low Frequency Inverter, split phase 120/240VAC output and 12VDC/240VAC input with built-in battery charger and transfer switch.

[Product Information](#)





[6000W DC 24V Split Phase Pure Sine wave Inverter ...](#)

This 120V/240V AC split phase pure sine wave inverter is a combination of an inverter, battery charger and AC auto-transfer switch. High transfer efficiency ...

[Product Information](#)



[6000 Watt Power Inverter 12 Volt DC To 110 Volt AC](#)

The PI-6000 takes direct current from a 12 volt battery system and converts it into standard 120 volt ac power. The 6000 watt 12 volt dc to 120 volt ac power ...

[Product Information](#)

[Best 6000 Watt Inverters - Reviews & Buying Guides](#)

On this page, I have included only those power inverters that have 6000W output power and they can be connected with 12-volt batteries. Which means, these large capacity ...

[Product Information](#)



[6000 Watt Power Inverter 12 Volt DC To 110 Volt AC](#)

The PI-6000 takes direct current from a 12 volt battery system and converts it into standard 120 volt ac power. The 6000 watt 12 volt dc to 120 volt ac power inverter includes digital monitoring ...

[Product Information](#)



[DURAFIED S6000DI Ac Power Inverter 605963035382](#)

The Durafied 12V/6000-12000W Power Inverter S6000DI (605963035382) is an excellent choice for users requiring a high-power inverter for heavy-duty applications.

[Product Information](#)



[Power Bright 6000 -Watt Power Inverter Lowes](#)

Shop Power Bright 6000 -Watt Power Inverter in the Power Inverters department at Lowe's . This heavy duty inverter plugs directly to a 12 Volt DC battery ...

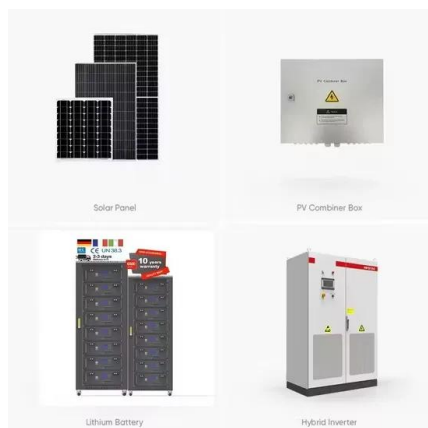
[Product Information](#)



PowerBright(TM) 12-Volt 6,000-Watt-Continuous Modified Sine ...

A 12-volt power inverter converts 12-volt DC power or direct current to standard AC power or alternating current, which allows you to run electrical equipment off your car or marine battery ...

[Product Information](#)



[Power Bright. PW6000-12. 12V 6000W continuous](#)

Power Bright, PW6000-12, 12V 6000W continuous / 12000W peak, modified wave inverter, dual AC outlet, low voltage, overload & temperature protection, LED display, 1 year warranty

[Product Information](#)



[Best 6000 Watt Inverters - Reviews & Buying Guides](#)

This heavy duty inverter connects directly to a 12 Volt DC battery to power large appliances, air conditioners, heavy duty power tools and many other ...

[Product Information](#)



[Power Bright, PW6000-12, 12V 6000W continuous](#)

Power Bright, PW6000-12, 12V 6000W continuous / 12000W peak, modified wave inverter, dual AC outlet, low voltage, overload & temperature protection, LED ...

[Product Information](#)

Contact Us

For catalog requests, pricing, or partnerships, please visit:
<https://www.les-jardins-de-wasquehal.fr>